



# 7257 PARKWAY DRIVE

HANOVER, MD 21076

FOR  
LEASE



**MACKENZIE**

COMMERCIAL REAL ESTATE SERVICES, LLC



# PROPERTY OVERVIEW

## HIGHLIGHTS:

- Excellent visibility from Route 100
- Building signage with visibility on Route 100 available for tenants over 4,000 sf
- LED lighting throughout
- Local landlord, professional management
- Plug and play
- Recent common area renovations

### AVAILABLE:

SUITE 150: 8,459 SF  
(DIRECT LOBBY ACCESS; DIVISIBLE)  
SUITE 200: 1,653 SF  
210: 1,312 SF

### PARKING RATIO:

3.4/1,000

### RENTAL RATE:

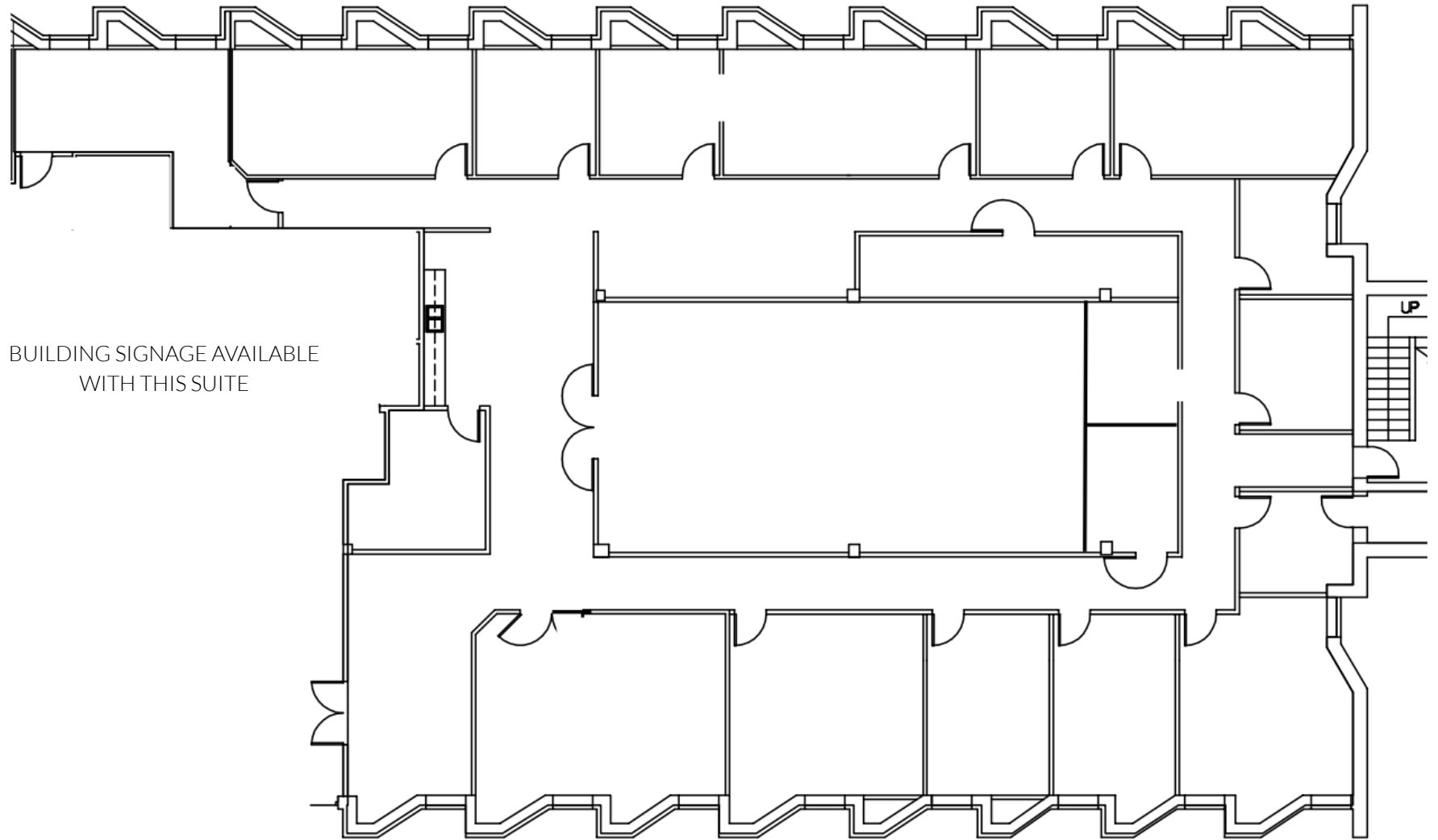
AVAILABLE UPON REQUEST





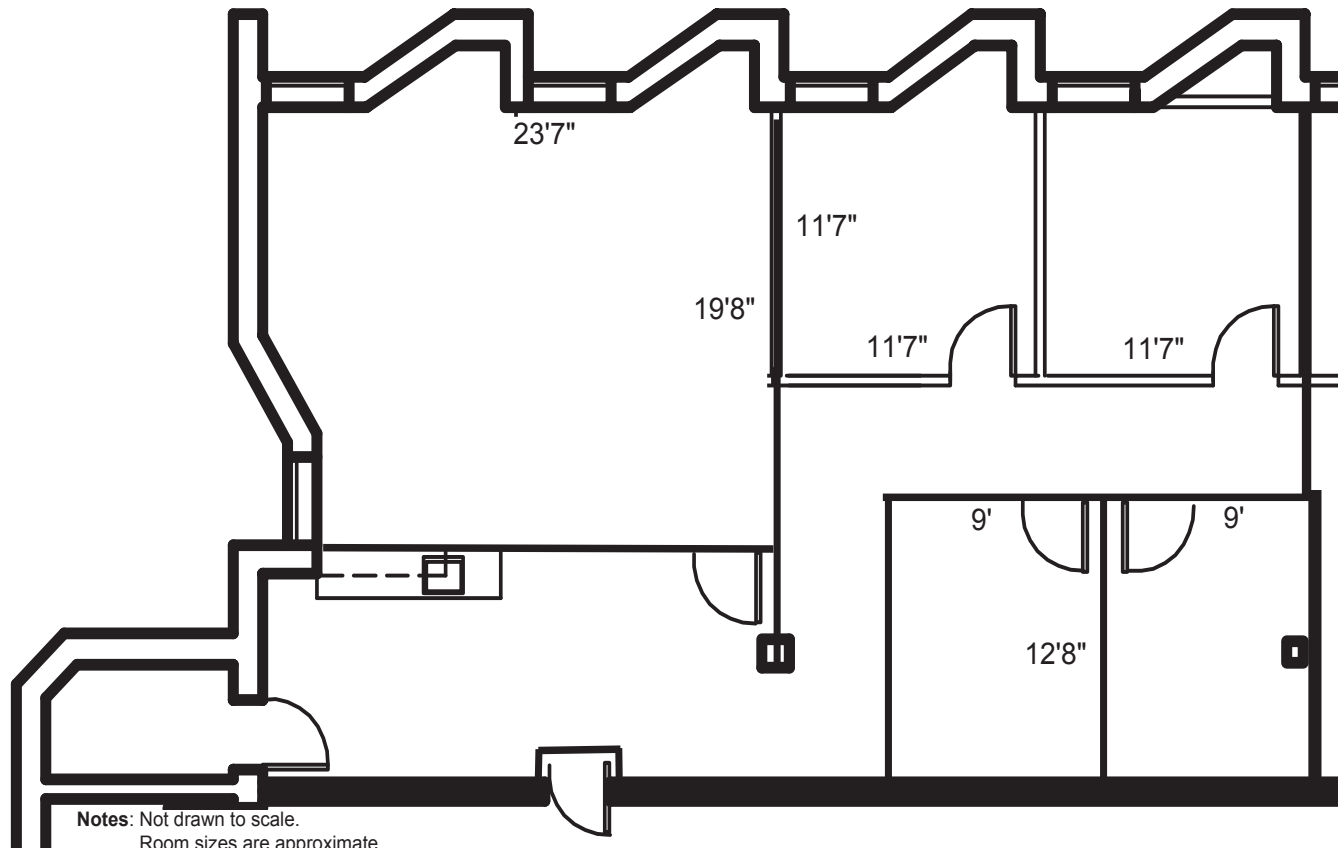
# FLOOR PLAN

SUITE 150: 8,459 SF



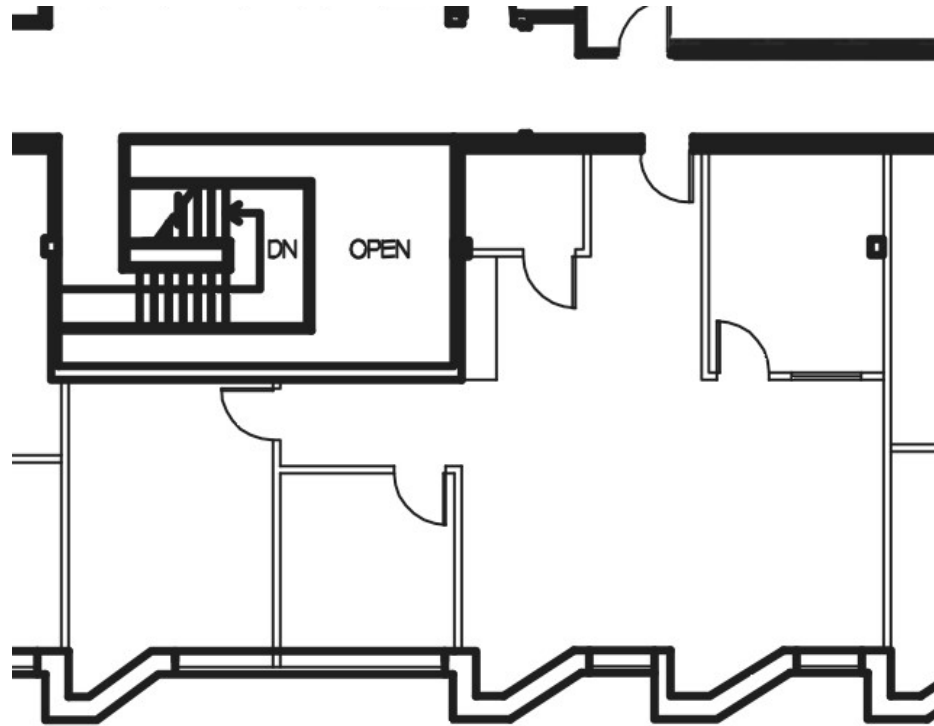
# FLOOR PLAN

SUITE 200: 1,653 SF



# FLOOR PLAN

SUITE 210: 1,312 SF





# LOCAL BIRDSEYE





# FOR MORE INFO CONTACT:



## BETHANY HOBBS

VICE PRESIDENT

410.953.0359

BHOBBS@mackenziecommercial.com



## MORGAN WIMBROW

SENIOR REAL ESTATE ADVISOR

410.494.4846

MWIMBROW@mackenziecommercial.com



## CHRIS BENNETT

EXECUTIVE VICE PRESIDENT & PRINCIPAL

410.953.0352

CBENNETT@mackenziecommercial.com



VISIT **PROPERTY PAGE** FOR MORE INFORMATION.



# MACKENZIE

COMMERCIAL REAL ESTATE SERVICES, LLC

410-974-9336

410 Severn Avenue  
Annapolis, MD 21403

OFFICES IN:

ANNAPOLIS

BALTIMORE

BEL AIR

COLUMBIA

LUTHERVILLE

[www.MACKENZIECOMMERCIAL.com](http://www.MACKENZIECOMMERCIAL.com)

No warranty or representation, expressed or implied, is made as to the accuracy of the information contained herein, and same is submitted subject to errors, omissions, change of price, rental or other conditions, withdrawal without notice, and to any specific listing conditions imposed by our principals.