



# 7600 OSLER DRIVE

TOWSON, MARYLAND 21286

FOR  
SALE



**MACKENZIE**

COMMERCIAL REAL ESTATE SERVICES, LLC

# PROPERTY OVERVIEW

## HIGHLIGHTS:

- Two (2) contiguous medical office suites with existing interior plumbing and efficient medical layout
- Access to suites immediately adjacent to main elevators
- Ample free/unreserved parking
- Ideal location across from the main campus of University of Maryland St. Joseph Medical Center
- Convenient to GMBC, Sheppard Pratt, and Towson University
- Easily accessible from York Road & Charles Street

AVAILABLE:

SUITE 310: 1,992 SF ±

LOT SIZE:

2.98 ACRES ±

STORIES:

4

PARKING:

4.5/1,000 SF

ZONING:

OR-1

SALE PRICE:

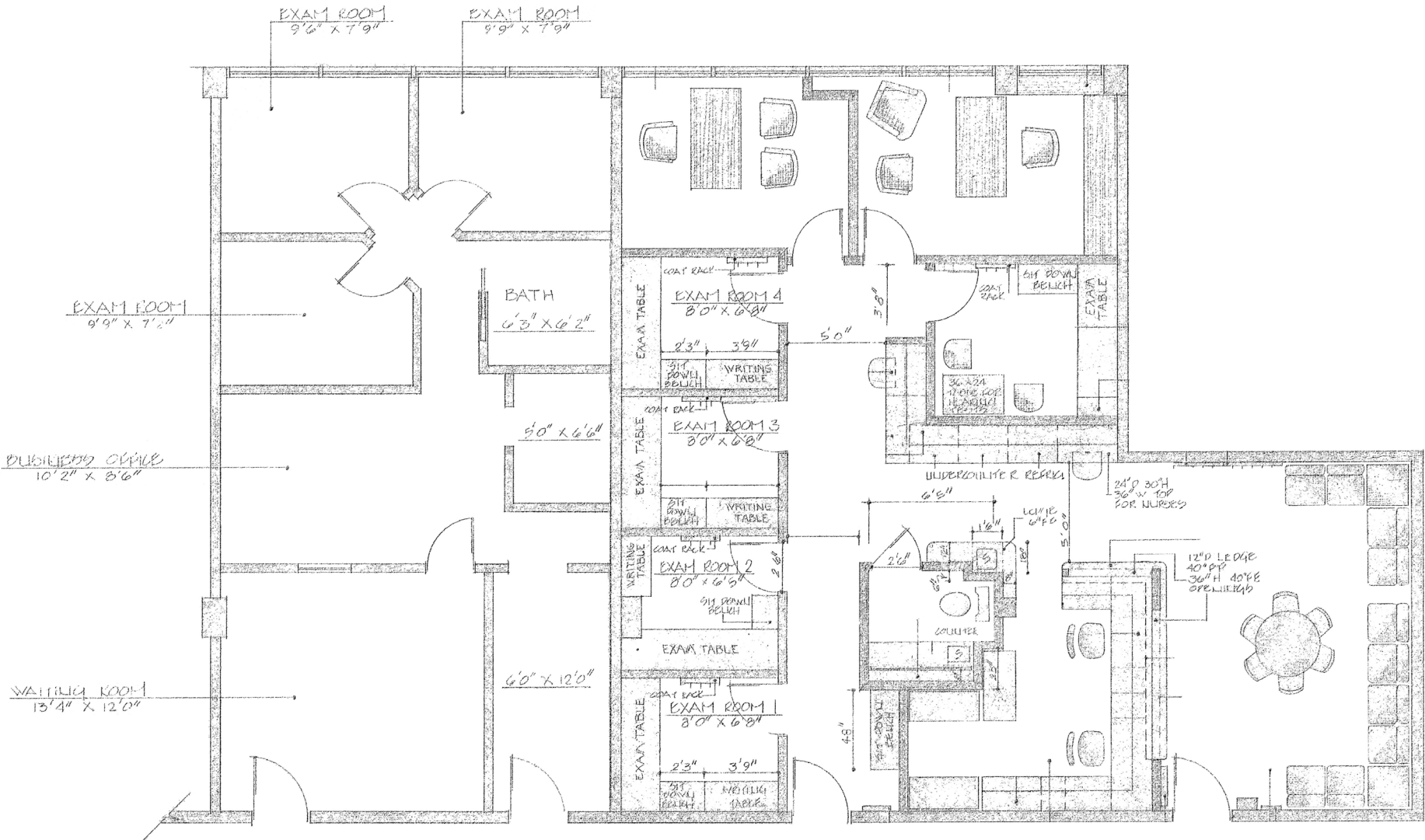
\$295,000



GOOGLE STREET VIEW



# FLOOR PLAN



# LOCAL BIRDSEYE



UNIVERSITY of MARYLAND  
ST. JOSEPH MEDICAL CENTER





# DEMOGRAPHICS

2025

RADIUS:

1 MILE

3 MILES

5 MILES

## RESIDENTIAL POPULATION



21,782

139,230

359,190

## DAYTIME POPULATION



30,429

149,564

353,340

## AVERAGE HOUSEHOLD INCOME



\$158,354

\$125,532

\$115,579

## NUMBER OF HOUSEHOLDS



6,432

55,913

149,317

## MEDIAN AGE

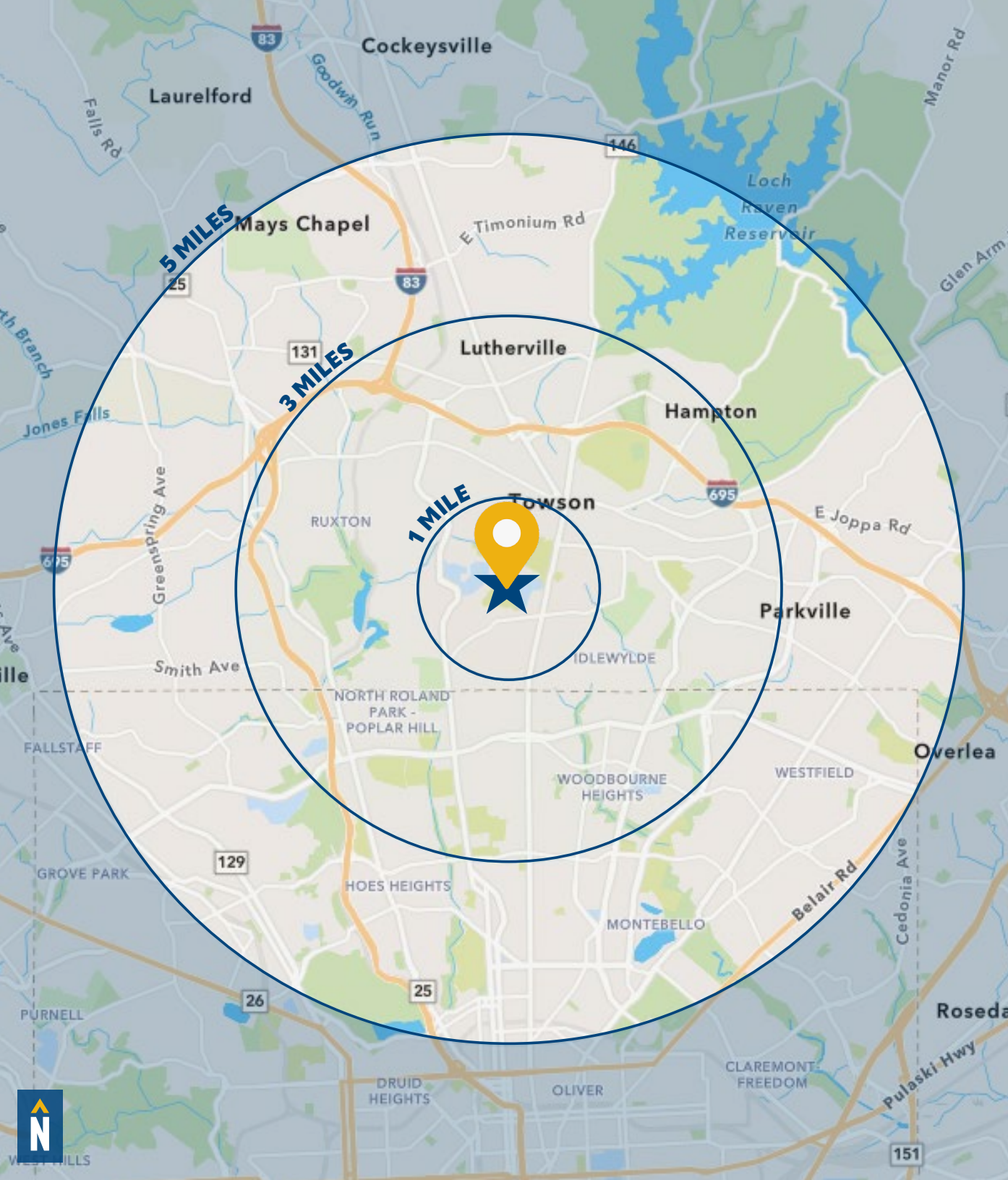


24.5

37.1

38.7

[FULL DEMOS REPORT](#)



# FOR MORE INFO **CONTACT:**



**MATT MUELLER**

SENIOR VICE PRESIDENT & PRINCIPAL

**410.494.6658**

**MMUELLER@mackenziecommercial.com**



**MACKENZIE**

COMMERCIAL REAL ESTATE SERVICES, LLC

**410-821-8585**

2328 W. Joppa Road, Suite 200  
Lutherville, MD 21093

OFFICES IN: ANNAPOLIS, MD BALTIMORE, MD BEL AIR, MD COLUMBIA, MD LUTHERVILLE, MD CHARLOTTESVILLE, VA

**www.MACKENZIECOMMERCIAL.com**



VISIT **PROPERTY PAGE** FOR MORE INFORMATION.

No warranty or representation, expressed or implied, is made as to the accuracy of the information contained herein, and same is submitted subject to errors, omissions, change of price, rental or other conditions, withdrawal without notice, and to any specific listing conditions imposed by our principals.