



# 7711 QUARTERFIELD ROAD

GLEN BURNIE, MARYLAND 21061

FOR  
LEASE



**MACKENZIE**

COMMERCIAL REAL ESTATE SERVICES, LLC



# PROPERTY OVERVIEW

## HIGHLIGHTS:

- Great visibility on and immediate access to Quarterfield Road
- Within minutes of I-97 and Route 100
- Within a 30 minute drive time of a population of 1,719,063
- 2 miles from UM Baltimore Washington Medical Center
- Join current tenants including
  - Maryland Primary Care Physicians
  - Toothfully Yours

AVAILABLE:

SUITE C2: 2,070 SF ±  
AVAILABLE 1/1/26

YEAR BUILT:

1975

PARKING:

9.66/1,000 SF

ZONING:

C1-B (COMMUNITY RETAIL)

RENTAL RATE:

NEGOTIABLE

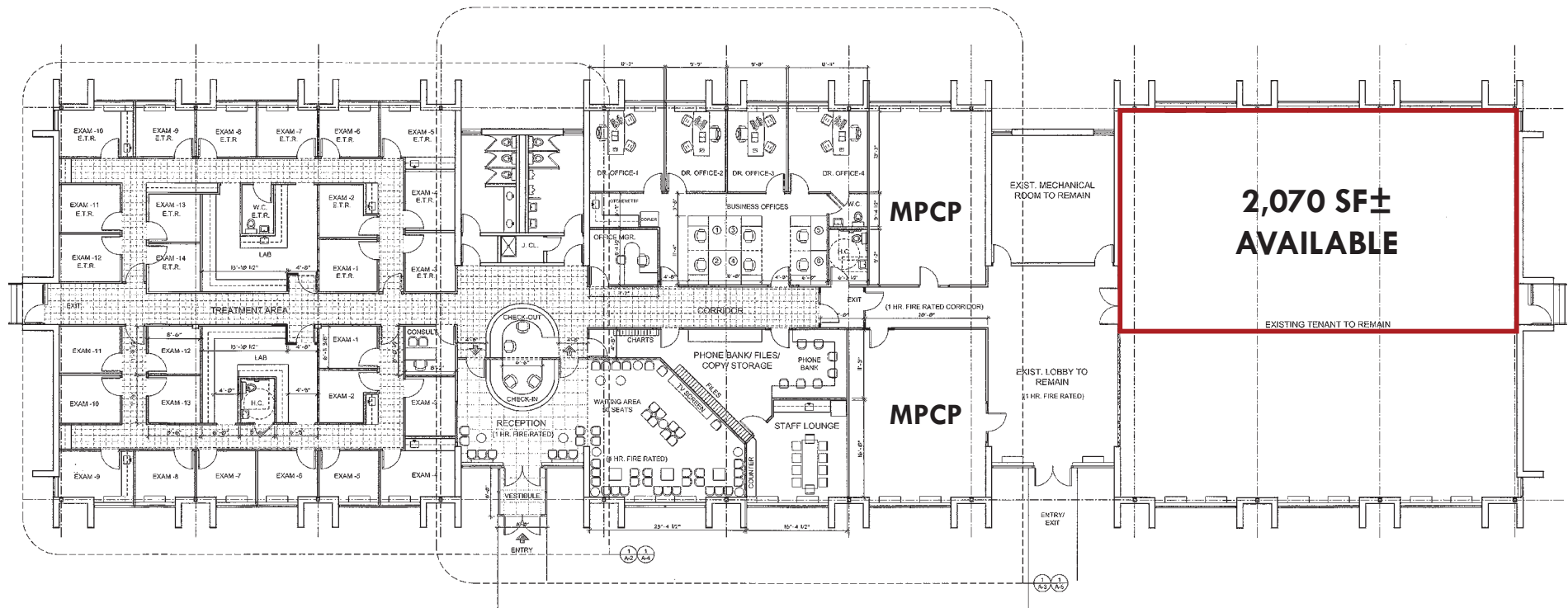


GOOGLE STREET VIEW





# FLOOR PLAN





# LOCAL BIRDSEYE



**SITE**



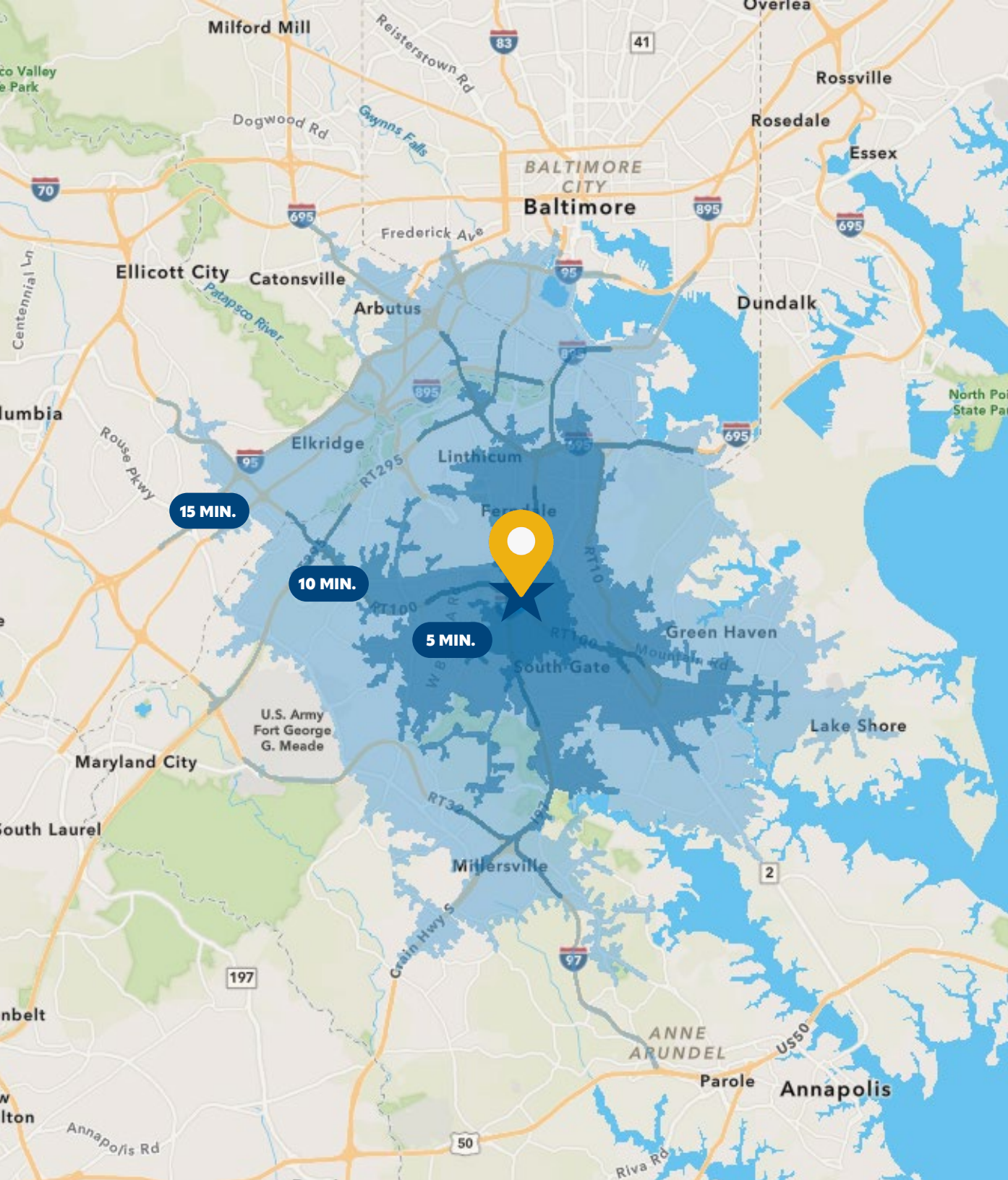
100



UNIVERSITY of MARYLAND  
BALTIMORE WASHINGTON  
MEDICAL CENTER







# DEMOGRAPHICS

2024



5 MIN.

10 MIN.

15 MIN.

## RESIDENTIAL POPULATION

	28,346	124,375	389,518
---	--------	---------	---------

## DAYTIME POPULATION

	24,421	118,958	383,534
---	--------	---------	---------

## AVERAGE HOUSEHOLD INCOME

	\$104,751	\$123,313	\$132,089
---	-----------	-----------	-----------

## NUMBER OF HOUSEHOLDS

	11,056	47,272	145,247
---	--------	--------	---------

## MEDIAN AGE

	36.5	38.2	37.4
---	------	------	------

FULL DEMOS REPORT 



# FOR MORE INFO **CONTACT:**



## **CHRIS BENNETT**

*EXECUTIVE VICE PRESIDENT & PRINCIPAL*

**410.953.0352**

**CBENNETT@mackenziecommercial.com**



## **MORGAN WIMBROW**

*VICE PRESIDENT*

**410.494.4846**

**MWIMBROW@mackenziecommercial.com**



VISIT **PROPERTY PAGE** FOR MORE INFORMATION.



# **MACKENZIE**

COMMERCIAL REAL ESTATE SERVICES, LLC

**443-573-3200**

**111 S. Calvert Street  
Baltimore, MD 21202**

OFFICES IN: ANNAPOLIS, MD **BALTIMORE, MD** BEL AIR, MD COLUMBIA, MD LUTHERVILLE, MD CHARLOTTESVILLE, VA

**[www.MACKENZIECOMMERCIAL.com](http://www.MACKENZIECOMMERCIAL.com)**

No warranty or representation, expressed or implied, is made as to the accuracy of the information contained herein, and same is submitted subject to errors, omissions, change of price, rental or other conditions, withdrawal without notice, and to any specific listing conditions imposed by our principals.