



# 800 W. BALTIMORE STREET

OFFICE/RETAIL FOR LEASE | BALTIMORE, MARYLAND 21201

FOR  
LEASE



**MACKENZIE**  
COMMERCIAL REAL ESTATE SERVICES, LLC



# PROPERTY OVERVIEW

## HIGHLIGHTS:

- 2nd Generation built out office space
- In-suite Kitchenette/Breakroom/Reception area/ Boardroom
- 2nd Generation Retail Bank Branch on ground floor of Class A Lab/Office Building
- Dedicated street front entrance and Lobby ATM
- **Active daytime population of 34,074 within a 0.5 mile radius, driven by the University's medical system and academic uses**
- Major transit route to Downtown Baltimore, M&T Bank Stadium, Camden Yards, Horseshoe Casino, I-95, and the BWI Airport
- Access to the University of Maryland BioPark's amenities
- Adjacent to 4MLK Lab Office/Retail and The Firehouse

## OPPORTUNITIES:

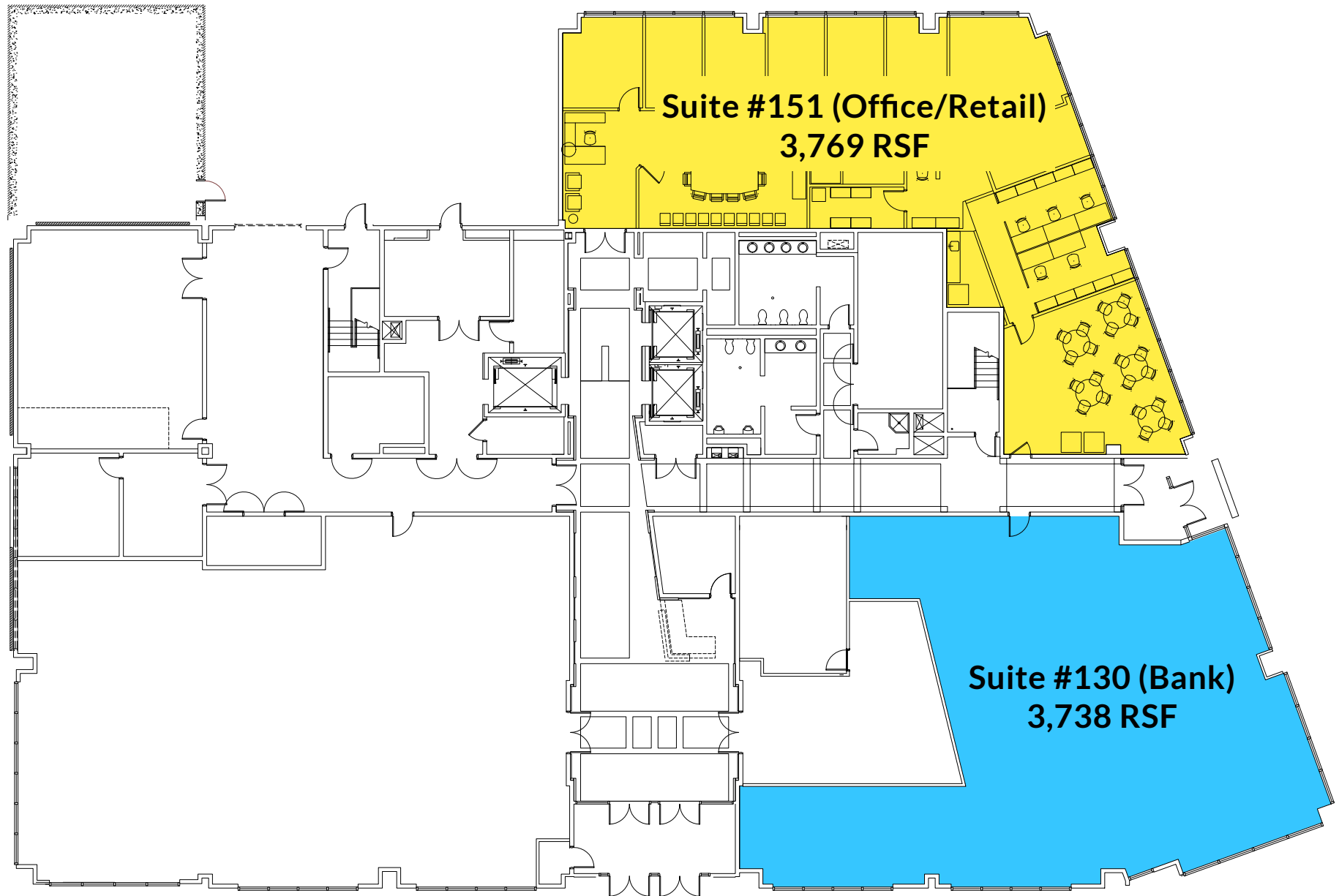
SUITE #151 (OFFICE):	3,769 SF ±
SUITE #130 (BANK):	3,738 SF ±
RENTAL RATE:	NEGOTIABLE



GOOGLE STREET VIEW



# FLOOR PLAN



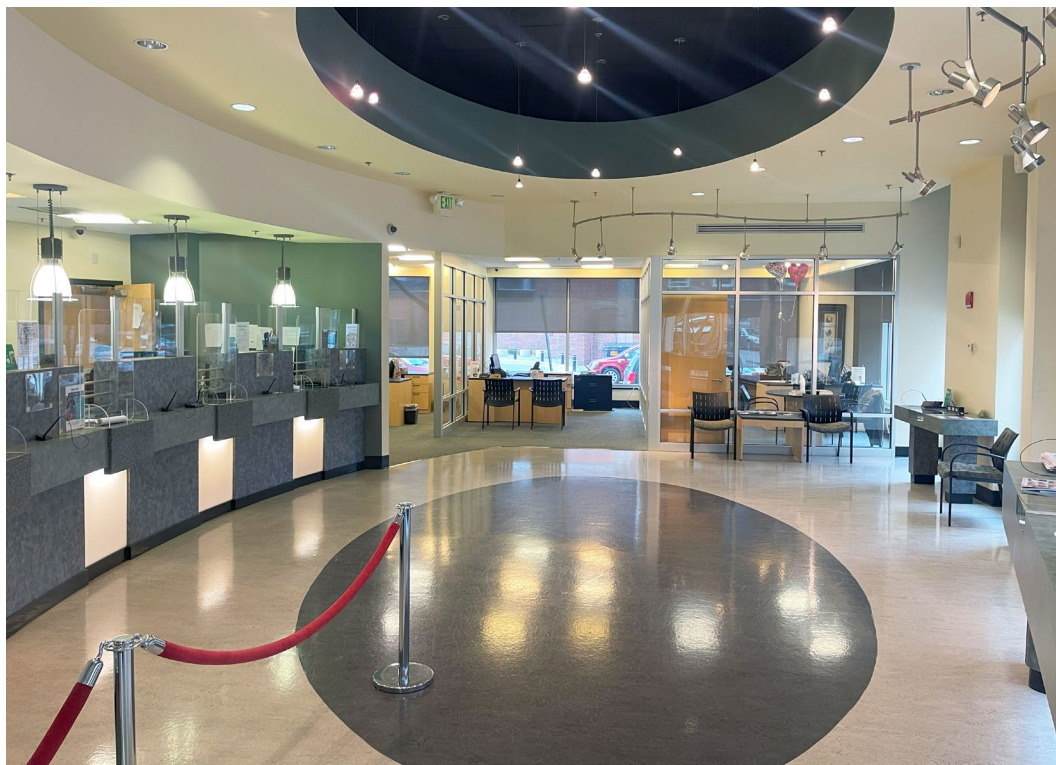


# SUITE #151 OFFICE INTERIOR PHOTOS





# SUITE #130 BANK INTERIOR PHOTOS





# LOCAL BIRDSEYE



**Baltimore**  
Convention Center

**ORIOLE PARK  
CAMDEN YARDS**



**HORSESHOE**  
CASINO • BALTIMORE



VA MEDICAL  
CLINIC

SCHOOL OF  
DENTISTRY

HEALTH  
SCIENCES

SCHOOL OF  
MEDICINE

SCHOOL OF  
PHARMACY

4MLK

FIREHOUSE  
BUILDING

**SITE**

801 W. BALTIMORE

**W BALTIMORE ST**

PROTON  
TREATMENT  
CENTER

PARKING GARAGE

**MLK JR BLVD 53,971 ADT**

MOTHER MARY LANGE  
CATHOLIC SCHOOL

**N FREMONT AVE**

**W FAYETTE ST**





# MARKET AERIAL





# FOR MORE INFO **CONTACT:**



## **HENRY DEFORD**

*SENIOR VICE PRESIDENT & PRINCIPAL*

**410.494.4861**

**HDEFORD@mackenziecommercial.com**



## **TIM HARRINGTON**

*VICE PRESIDENT*

**410.494.4855**

**TIMHARRINGTON@mackenziecommercial.com**



## **COREY CAPUTO**

*SENIOR REAL ESTATE ADVISOR*

**410.879.7329**

**CCAPTUO@mackenziecommercial.com**



# **MACKENZIE**

COMMERCIAL REAL ESTATE SERVICES, LLC

**410-821-8585**

**2328 W. Joppa Road, Suite 200  
Lutherville, MD 21093**

OFFICES IN: ANNAPOLIS, MD BALTIMORE, MD BEL AIR, MD COLUMBIA, MD **LUTHERVILLE, MD** CHARLOTTESVILLE, VA

**[www.MACKENZIECOMMERCIAL.com](http://www.MACKENZIECOMMERCIAL.com)**

No warranty or representation, expressed or implied, is made as to the accuracy of the information contained herein, and same is submitted subject to errors, omissions, change of price, rental or other conditions, withdrawal without notice, and to any specific listing conditions imposed by our principals.