

FOR LEASE

 Baltimore County, MD

MARYLAND EXECUTIVE PARK

8501 LASALLE ROAD | TOWSON, MARYLAND 21286

AVAILABLE

Suite 103: 4,577 sf
Suite 202: 1,649 sf
Suite 204: 1,095 sf
Suite 211: 1,697 sf

BUILDING SIZE

56,980 sf

OCCUPANCY

Immediate

RENTAL RATE

Negotiable, Full Service

HIGHLIGHTS

- ▶ Excellent location - minutes from I-695 and Downtown Towson
- ▶ Food and banking options within walking distance
- ▶ Local owner operator
- ▶ Abundant free surface parking



Joe Bradley

📞 410.494.4892
✉ jbradley@mackenziecommercial.com

MacKenzie Commercial Real Estate Services, LLC

Matt Mueller

📞 410.494.6658
✉ mmueller@mackenziecommercial.com

• 410-821-8585 • 2328 W. Joppa Road, Suite 200 | Lutherville-Timonium, Maryland 21093 • www.MACKENZIECOMMERCIAL.com

Henson Ford

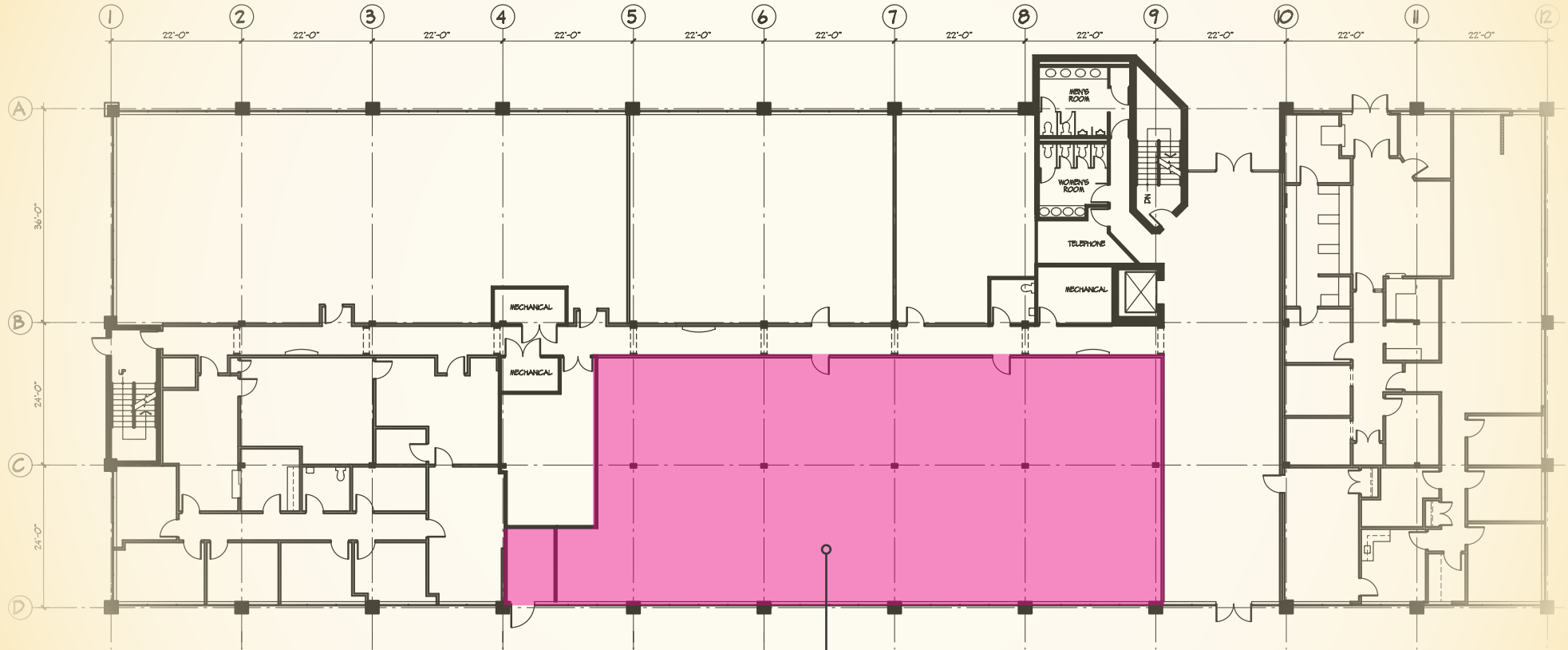
📞 410.494.6657
✉ hford@mackenziecommercial.com

FOR LEASE

Baltimore County, MD

FIRST FLOOR PLAN

MARYLAND EXECUTIVE PARK | 8501 LASALLE ROAD | TOWSON, MARYLAND 21286



Suite 103

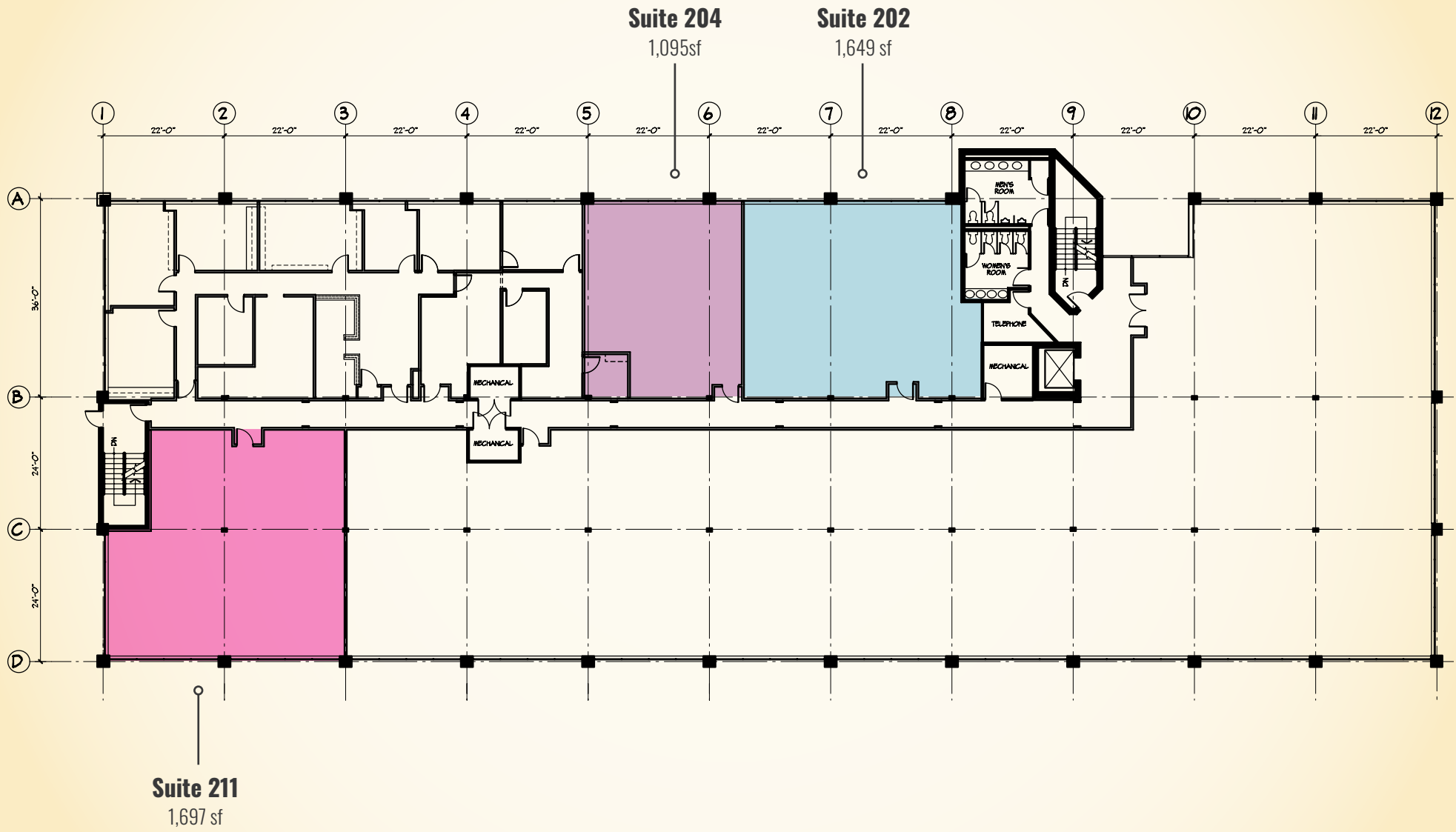
4,577 sf

FOR LEASE

Baltimore County, MD

SECOND FLOOR PLAN

MARYLAND EXECUTIVE PARK | 8501 LASALLE ROAD | TOWSON, MARYLAND 21286

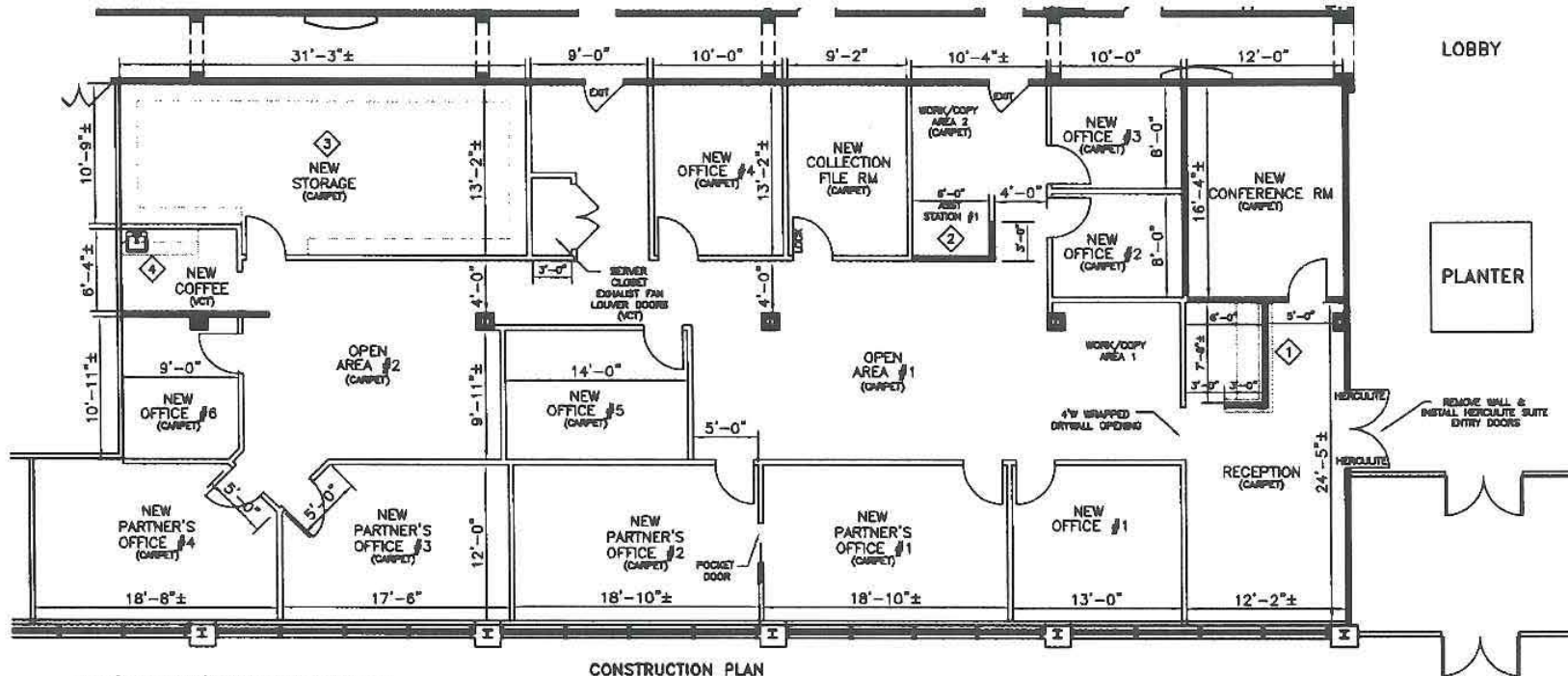


FOR LEASE

Baltimore County, MD

SPACE PLAN: SUITE 103

MARYLAND EXECUTIVE PARK | 8501 LASALLE ROAD | TOWSON, MARYLAND 21286



- CONSTRUCTION PLAN**
- 1 42" WALL WITH 12" LAMINATE LEDGE ON FRONT WALL
36" WALL WITH 12" LAMINATE LEDGE ON SIDE WALL
WITH 24" LAMINATE WORK SURFACE BEHIND
 - 2 42" WALL WITH 6" WOOD CAP
 - 3 FIXED 18" WOOD SHELVING SPACED 12" O.C.
FROM FLOOR TO CEILING
 - 4 6" WALL AND BASE CABINETS W/ADA SINK
& MICROWAVE SIZED ABOVE

FOR LEASE

Baltimore County, MD

BIRDSEYE

MARYLAND EXECUTIVE PARK | 8501 LASALLE ROAD | TOWSON, MARYLAND 21286



FOR LEASE

Baltimore County, MD

LOCAL AMENITIES

MARYLAND EXECUTIVE PARK | 8501 LASALLE ROAD | TOWSON, MARYLAND 21286

