



MARYLAND EXECUTIVE PARK

8501 LASALLE ROAD | TOWSON, MARYLAND 21286

FOR
LEASE



MACKENZIE

COMMERCIAL REAL ESTATE SERVICES, LLC

PROPERTY OVERVIEW

HIGHLIGHTS:

- Excellent location - minutes from I-695 and Downtown Towson
- Plenty of food and banking options within walking distance
- Local owner operator
- Abundant free surface parking

AVAILABLE:

SUITE 103: 4,577 SF
SUITE 202: 1,649 SF
SUITE 204: 1,095 SF
SUITE 211: 1,697 SF

BUILDING SIZE:

56,980 SF

OCCUPANCY:

IMMEDIATE

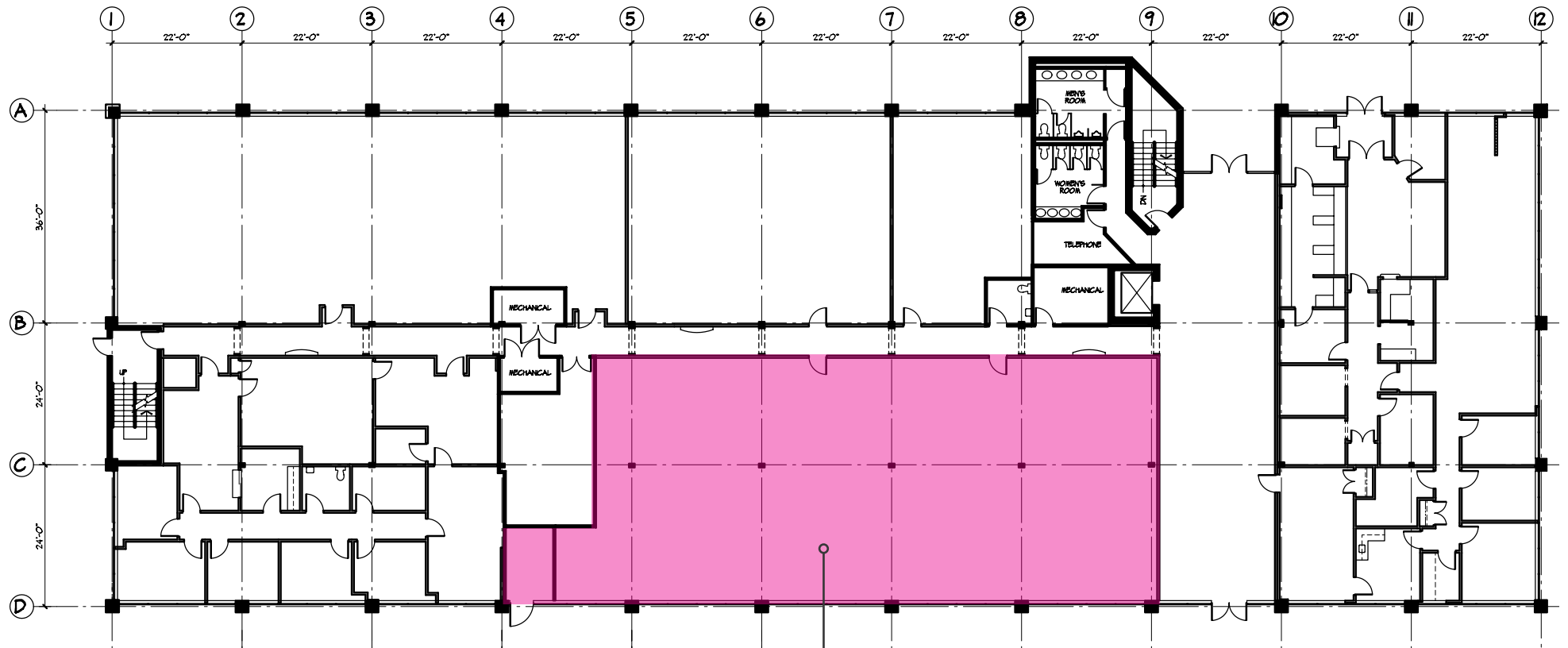
RENTAL RATE:

NEGOTIABLE, FULL SERVICE



GOOGLE STREET VIEW

FIRST FLOOR PLAN

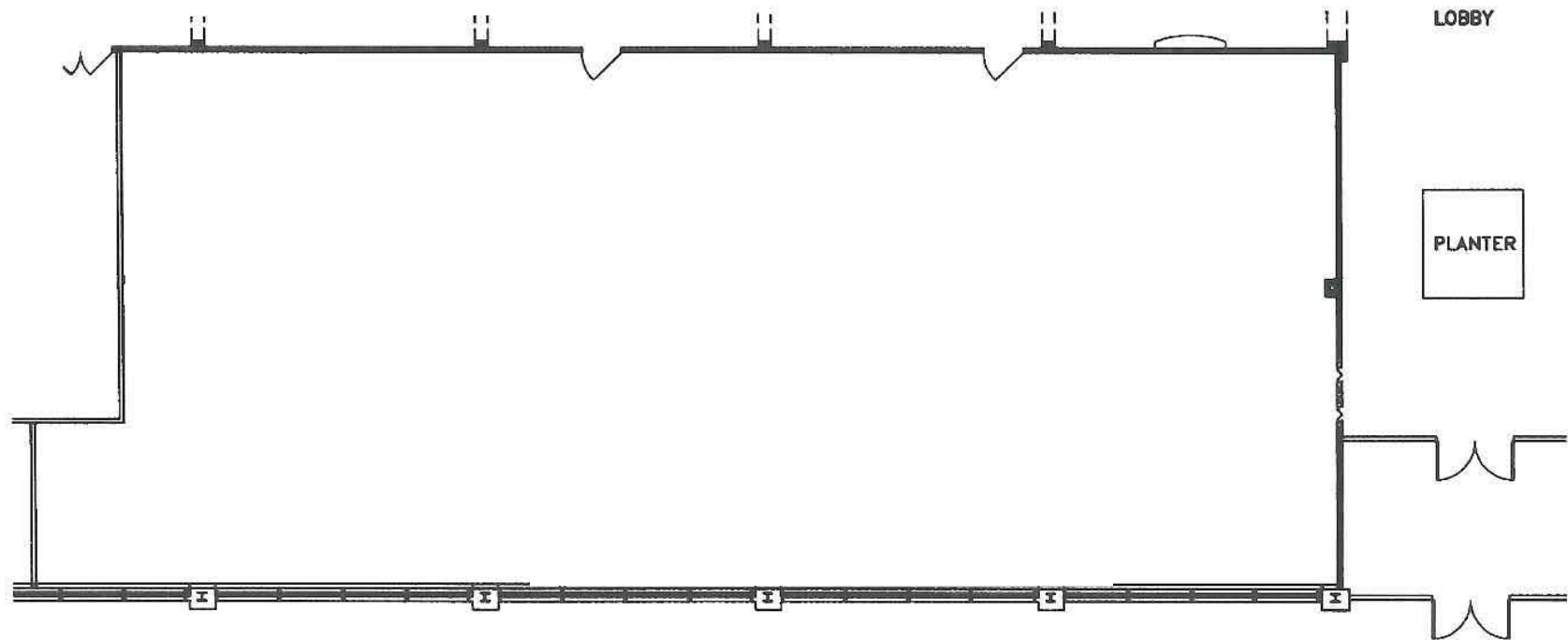


Suite 103
4,577 sf

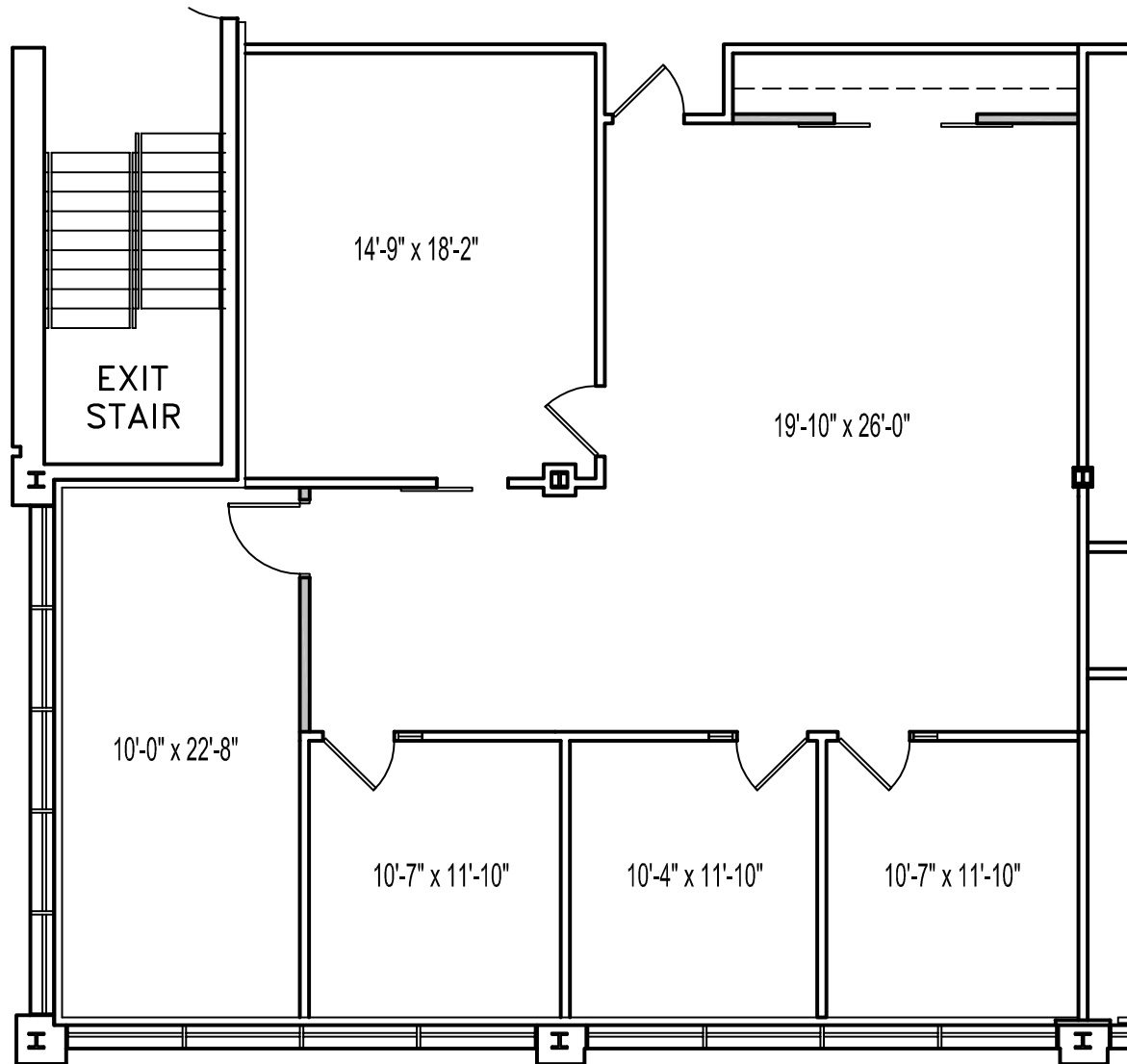
SECOND FLOOR PLAN



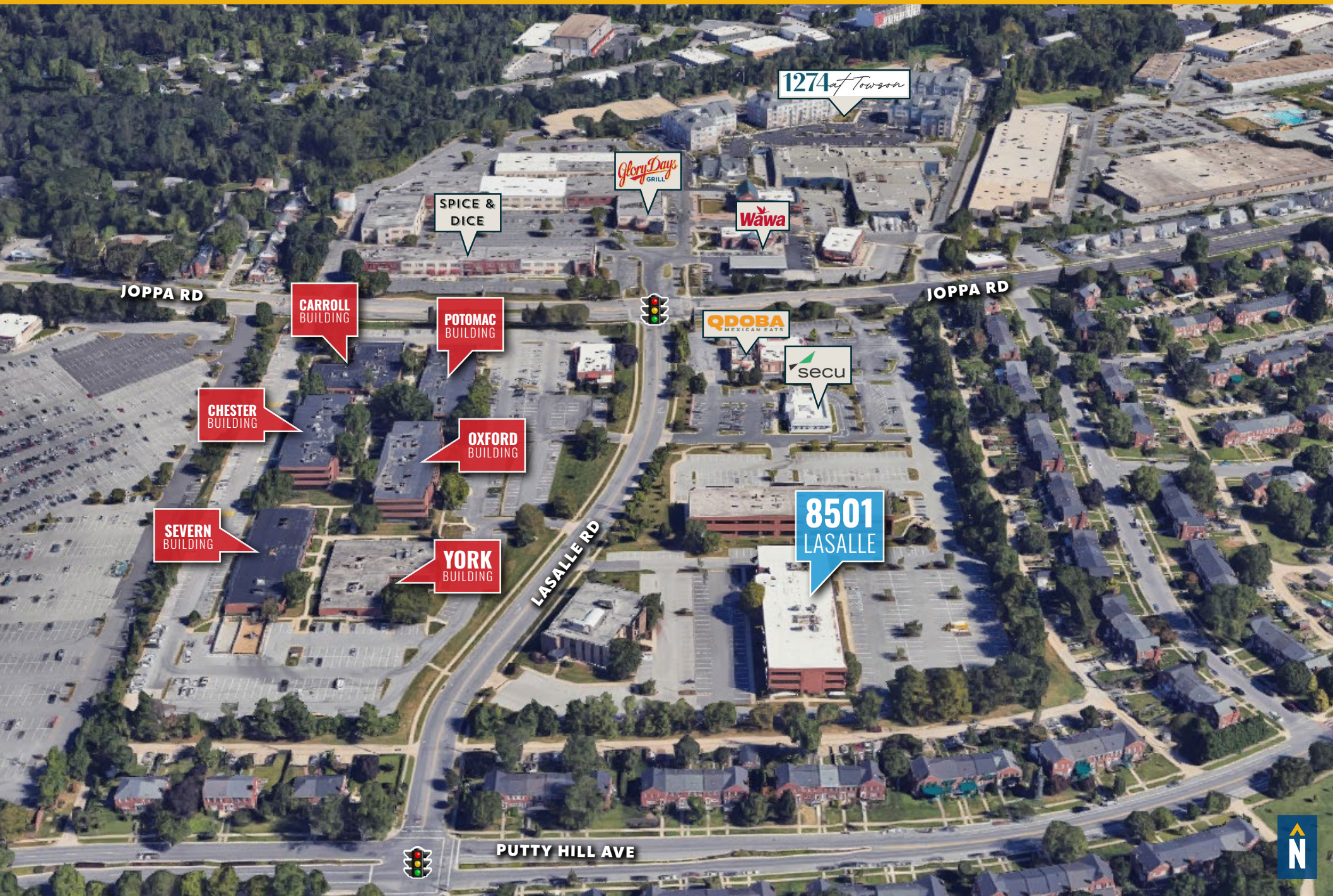
SPACE PLAN: **SUITE 103**



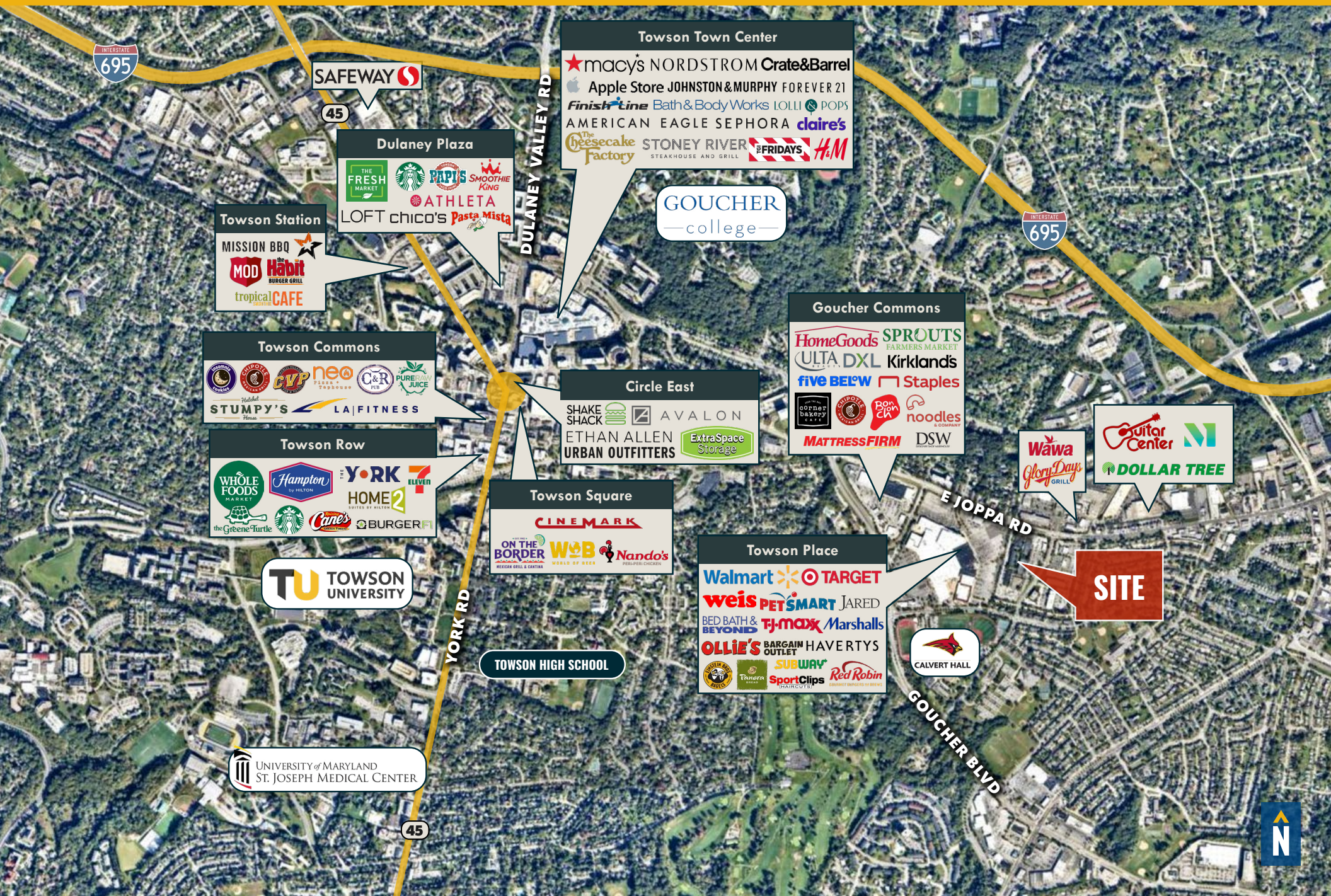
SPACE PLAN: SUITE 211



LOCAL BIRDSEYE



LOCAL TRADE AREA



FOR MORE INFO **CONTACT:**



JOE BRADLEY

SENIOR VICE PRESIDENT & PRINCIPAL

410.494.4892

JBRADLEY@mackenziecommercial.com



MATT MUELLER

SENIOR VICE PRESIDENT & PRINCIPAL

410.494.6658

MMUELLER@mackenziecommercial.com



HENSON FORD

VICE PRESIDENT

410.494.6657

HFORD@mackenziecommercial.com



VISIT **PROPERTY PAGE** FOR MORE INFORMATION.



MACKENZIE

COMMERCIAL REAL ESTATE SERVICES, LLC

410-821-8585

**2328 W. Joppa Road, Suite 200
Lutherville, MD 21093**

OFFICES IN:

ANNAPOLIS

BALTIMORE

BEL AIR

COLUMBIA

LUTHERVILLE

www.MACKENZIECOMMERCIAL.com

No warranty or representation, expressed or implied, is made as to the accuracy of the information contained herein, and same is submitted subject to errors, omissions, change of price, rental or other conditions, withdrawal without notice, and to any specific listing conditions imposed by our principals.