



MARYLAND EXECUTIVE PARK

8600 LASALLE ROAD | TOWSON, MARYLAND 21286

FOR
LEASE



MACKENZIE

COMMERCIAL REAL ESTATE SERVICES, LLC

PROPERTY OVERVIEW

HIGHLIGHTS:

- Excellent location - minutes from I-695 and Downtown Towson
- Plenty of food and banking options within walking distance
- Local owner operator
- Abundant free surface parking

AVAILABLE:

CHESTER BLDG:
1,383 SF - 3,083 SF

OXFORD BLDG:
1,053 SF - 6,314 SF

SEVERN BLDG:
1,518 - 3,611 SF

OCCUPANCY:

IMMEDIATE

RENTAL RATE:

NEGOTIABLE, FULL SERVICE

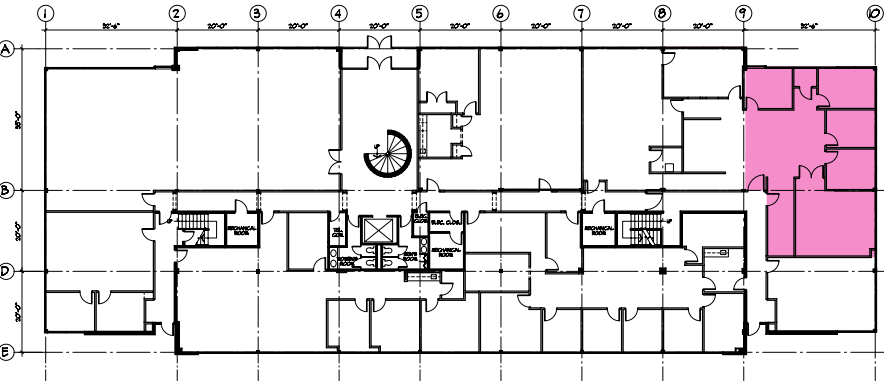


BUILDING PHOTOS

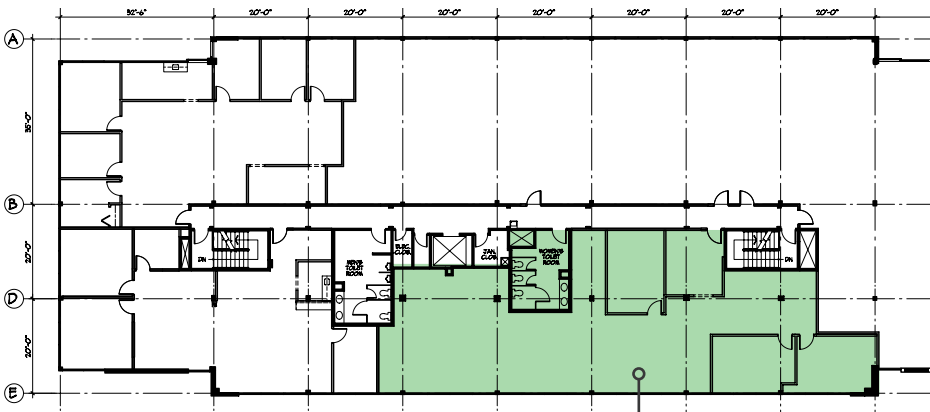


CHESTER BUILDING

1ST FLOOR



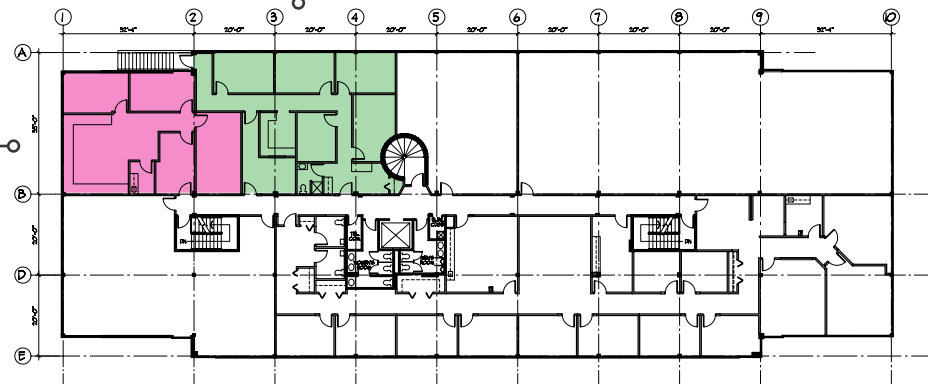
Suite 302
1,960 sf



Suite 329
1,383 sf*

Suite 333
2,295 sf

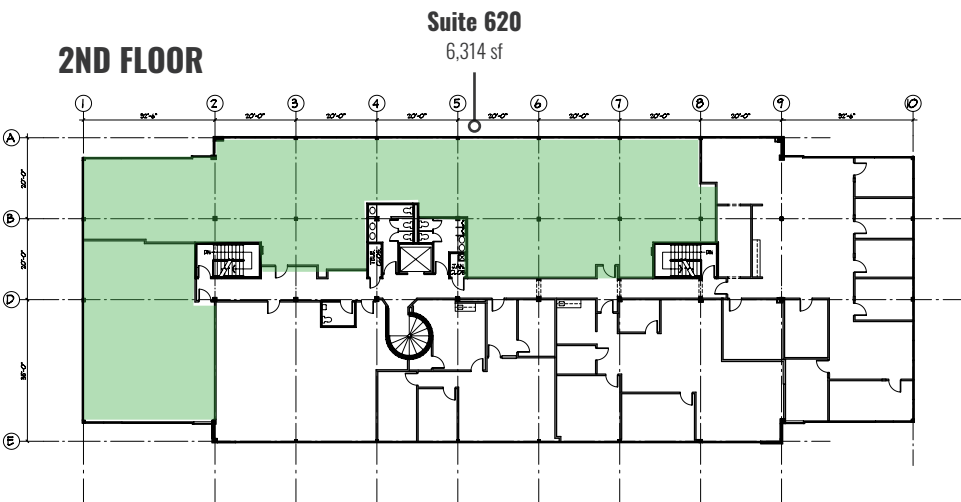
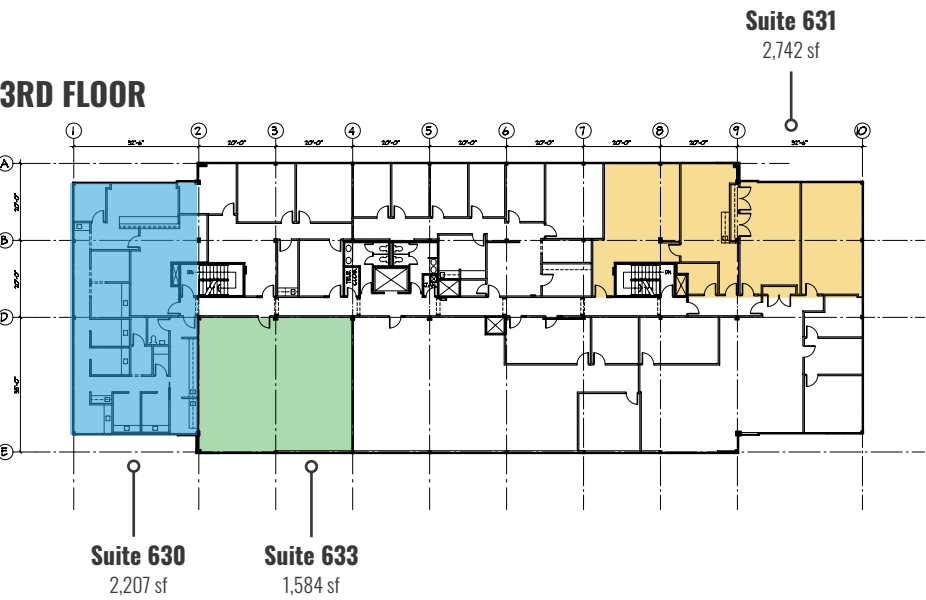
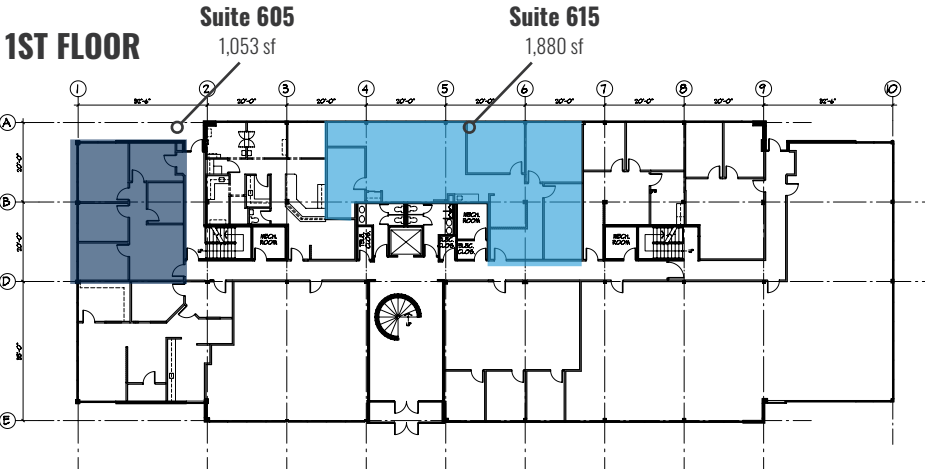
2ND FLOOR



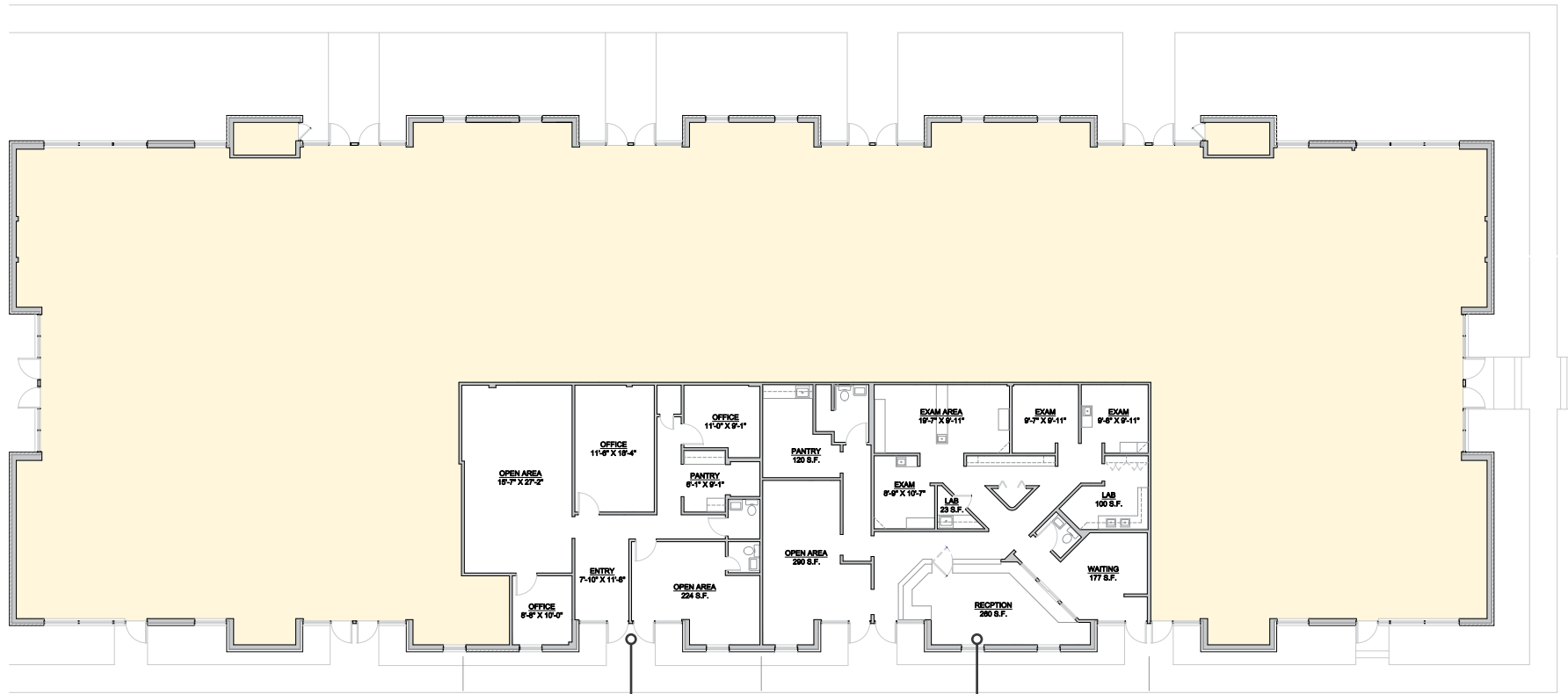
Suite 325
1,700 sf*

*can be combined

OXFORD BUILDING



SEVERN BUILDING

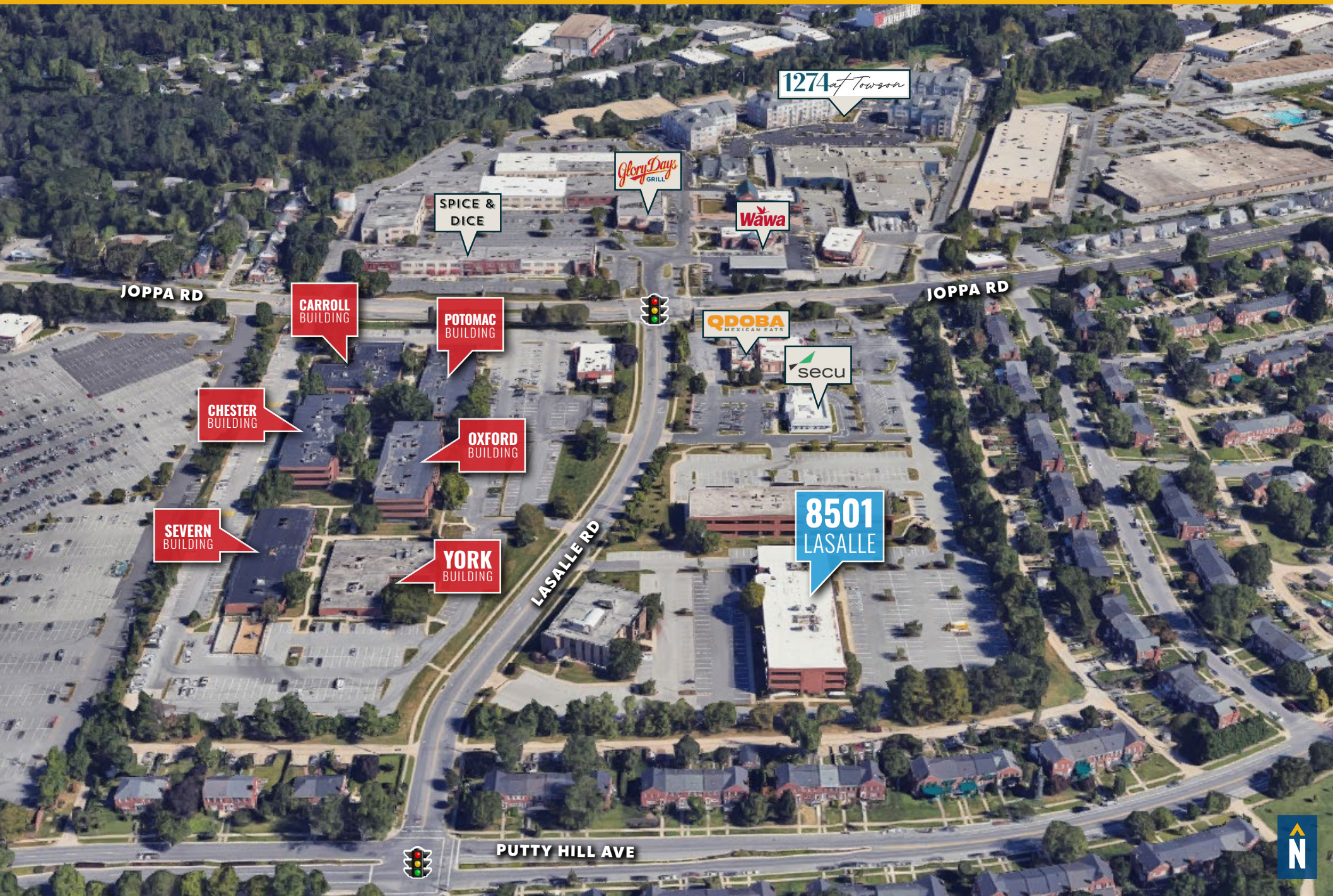


Suite 402
1,518 sf

Suite 406
2,093 sf

402 & 406
Can be combined to 3,611 sf

LOCAL BIRDSEYE



1274 at Towson

Glory Days
GRILL

Wawa

SPICE &
DICE

JOPPA RD

CARROLL
BUILDING

POTOMAC
BUILDING

JOPPA RD

QDOBA
MEXICAN EATS

secu

CHESTER
BUILDING

OXFORD
BUILDING

SEVERN
BUILDING

YORK
BUILDING

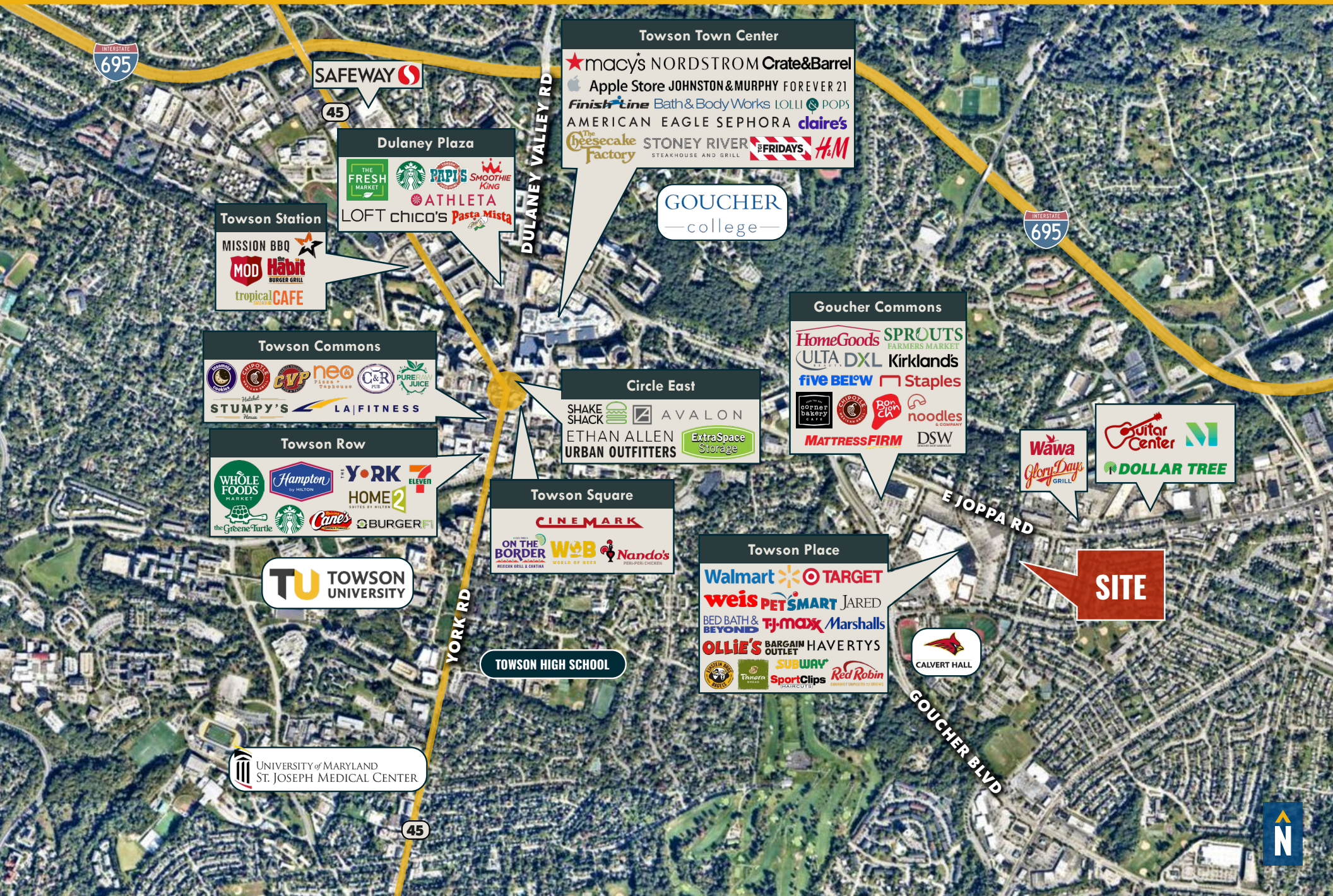
LASALLE RD

8501
LASALLE

PUTTY HILL AVE



LOCAL TRADE AREA



FOR MORE INFO **CONTACT:**



JOE BRADLEY

SENIOR VICE PRESIDENT & PRINCIPAL

410.494.4892

JBRADLEY@mackenziecommercial.com



MATT MUELLER

SENIOR VICE PRESIDENT & PRINCIPAL

410.494.6658

MMUELLER@mackenziecommercial.com



HENSON FORD

VICE PRESIDENT

410.494.6657

HFORD@mackenziecommercial.com



VISIT **PROPERTY PAGE** FOR MORE INFORMATION.



MACKENZIE

COMMERCIAL REAL ESTATE SERVICES, LLC

410-821-8585

**2328 W. Joppa Road, Suite 200
Lutherville, MD 21093**

OFFICES IN:

ANNAPOLIS

BALTIMORE

BEL AIR

COLUMBIA

LUTHERVILLE

www.MACKENZIECOMMERCIAL.com

No warranty or representation, expressed or implied, is made as to the accuracy of the information contained herein, and same is submitted subject to errors, omissions, change of price, rental or other conditions, withdrawal without notice, and to any specific listing conditions imposed by our principals.