



MACKENZIE
RETAIL

**FLAGSHIP
LOCATION
w/ PARKING!**



HAMPDEN RETAIL

902 W. 36TH STREET | BALTIMORE, MARYLAND 21211

HIGHLIGHTS

- » 2nd generation **bank branch** with existing **vault** in place
- » **Flagship location** for a bank, lifestyle/fashion brand, soft goods retailer, etc.
- » High-volume **walking traffic** location
- » Existing restrooms **in place**
- » Significant **stockroom** and **storage space** available
- » Prime **signage opportunity** facing W. 36th Street
- » Ideal location on **"The Avenue,"** the fastest growing retail/restaurant corridor in Baltimore

AVAILABLE:

2,850 SF ±

RENTAL RATE:

\$125,000/YR., NNN

PARKING:

REAR SURFACE
PARKING AVAILABLE

ZONING:

C-1 (NEIGHBORHOOD
BUSINESS DISTRICT)

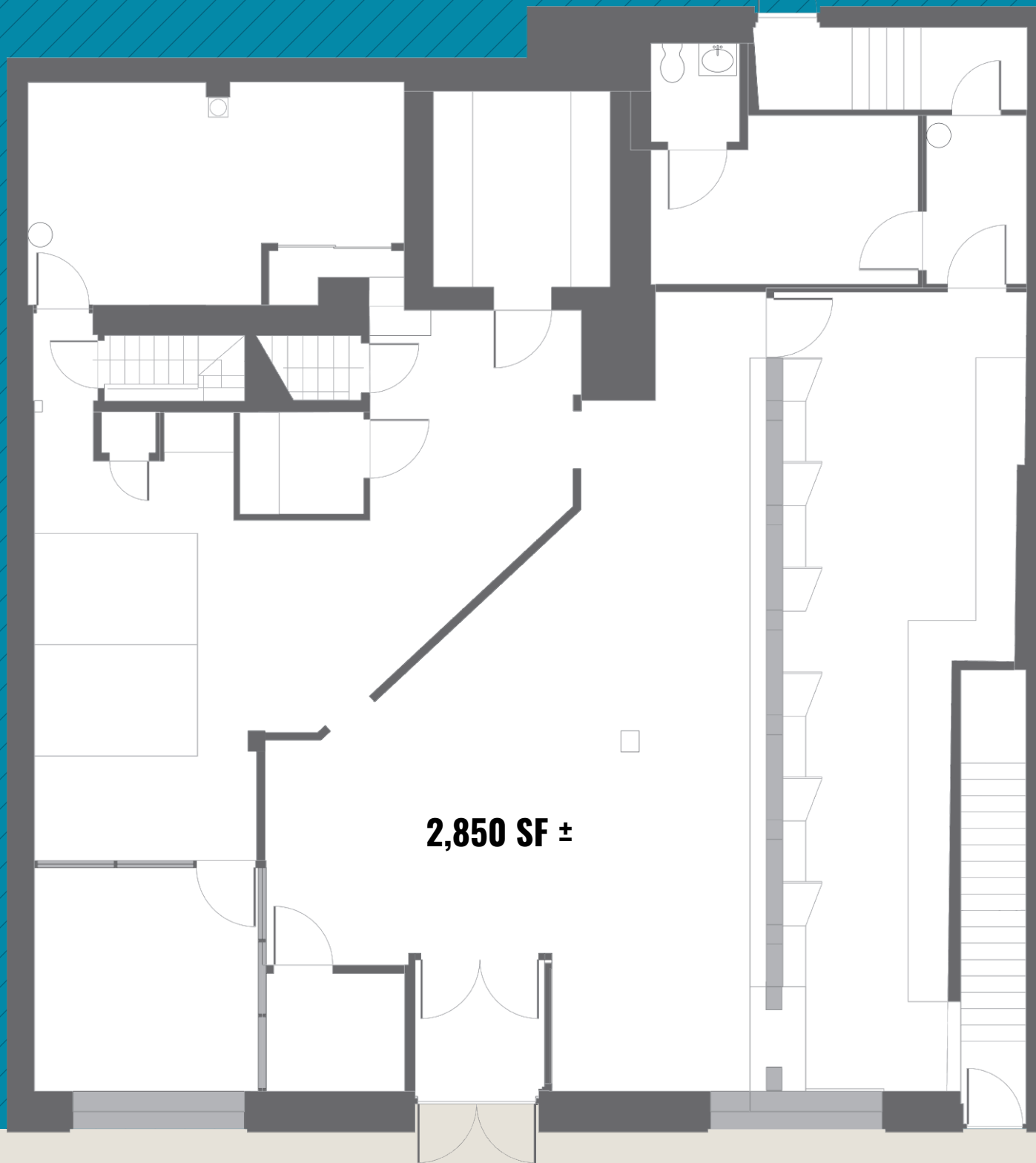


GOOGLE STREET VIEW



* Existing Conditions

EXISTING LAYOUT



2,850 SF ±

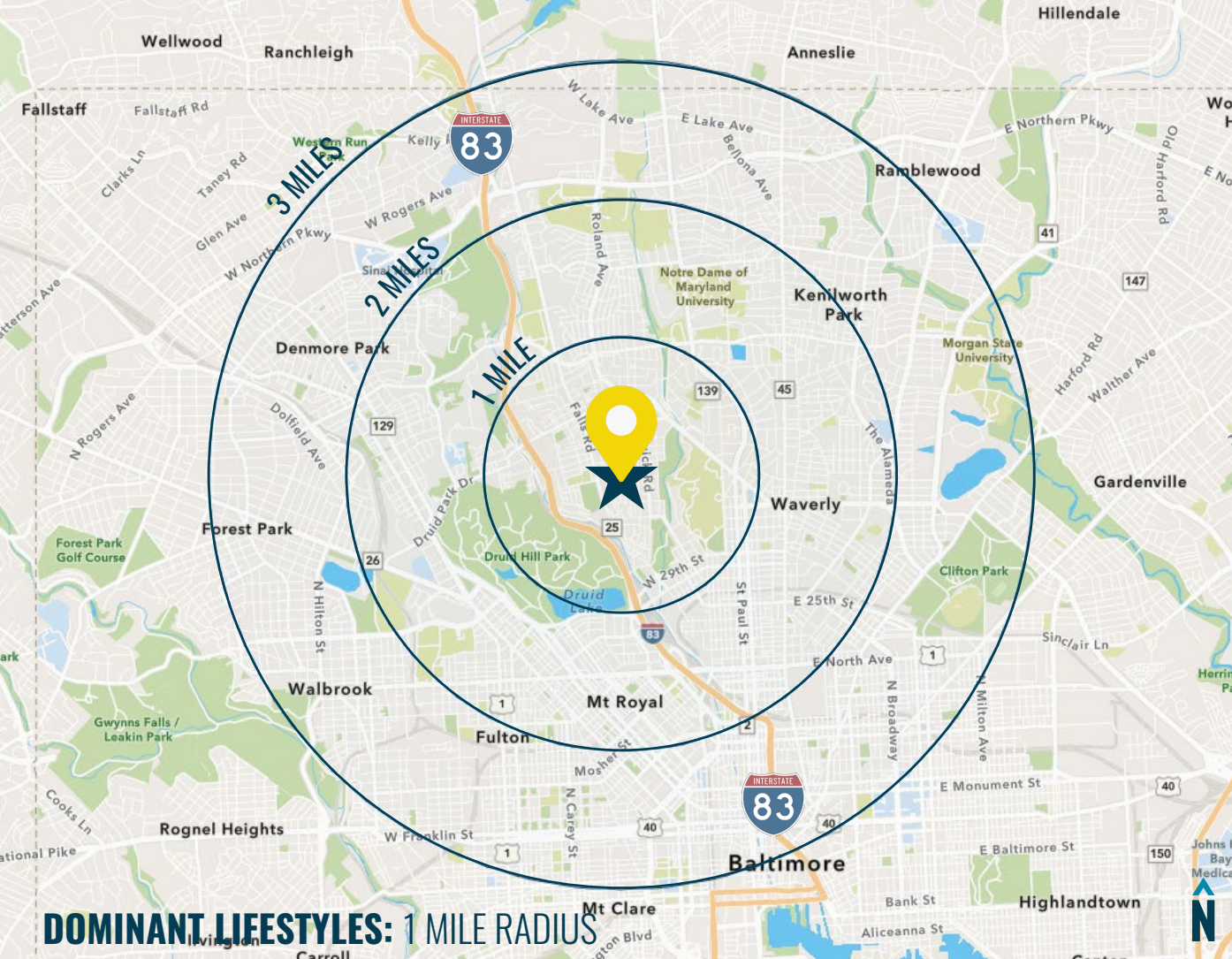
**STREET
LEVEL**





SCENES FROM HAMPDEN





39%

EMERALD CITY



Well educated and well employed, half have a college degree and a professional occupation. Highly connected, they use the Internet for entertainment and environmentally friendly purchases.

Median Age: **37.4**

Median Household Income: **\$59,200**

15%

METRO RENTERS



The popularity of urban life continues to increase for these consumers in their late twenties and thirties. Residents spend a large portion of their wages on rent, clothes, and the latest technology.

Median Age: **32.5**

Median Household Income: **\$67,000**

12%

DORMS
TO DIPLOMAS



On their own for the first time, these residents are just learning about finance and cooking. Frozen dinners and fast food are common. Shopping trips are sporadic, and preferences for products are still being established.

Median Age: **21.6**

Median Household Income: **\$16,800**

DEMOGRAPHICS

2022

RADIUS:

1 MILE

2 MILES

3 MILES

RESIDENTIAL POPULATION



28,773

111,869

242,065

DAYTIME POPULATION



35,018

117,029

270,384

AVERAGE HOUSEHOLD INCOME



\$117,329

\$93,283

\$84,938

NUMBER OF HOUSEHOLDS



13,722

50,102

105,962

MEDIAN AGE



34.3

36.1

36.9

FULL DEMOS REPORT





CONTACT:



TIM HARRINGTON

SENIOR REAL ESTATE ADVISOR

410.494.4855

TIMHARRINGTON@mackenziecommercial.com



JOHN HARRINGTON

SENIOR VICE PRESIDENT & PRINCIPAL

410.494.4863

JHARRINGTON@mackenziecommercial.com



COREY CAPUTO

SENIOR REAL ESTATE ADVISOR

410.879.7329

CCAPUTO@mackenziecommercial.com

MacKenzie Commercial Real Estate Services, LLC • 410-821-8585 • 2328 W. Joppa Road, Suite 200 | Lutherville, Maryland 21093 • www.MACKENZIECOMMERCIAL.com

No warranty or representation, expressed or implied, is made as to the accuracy of the information contained herein, and same is submitted subject to errors, omissions, change of price, rental or other conditions, withdrawal without notice, and to any specific listing conditions imposed by our principals.