



# 9093 RIDGEFIELD DRIVE

FREDERICK, MD 21701

FOR  
**LEASE/  
SALE**



**MACKENZIE**

COMMERCIAL REAL ESTATE SERVICES, LLC

# PROPERTY OVERVIEW

## HIGHLIGHTS:

- Prime location with easy access to Route 70
- Fully built out operational dental office
- Features 4 operatories with 4 dental chairs, each with digital X-ray
- The ability to move in and operate immediately
- Plenty of parking

AVAILABLE:

SUITE 103: 1,400 SF

ZONING:

PUD

RENTAL RATE:

\$26/SF MG

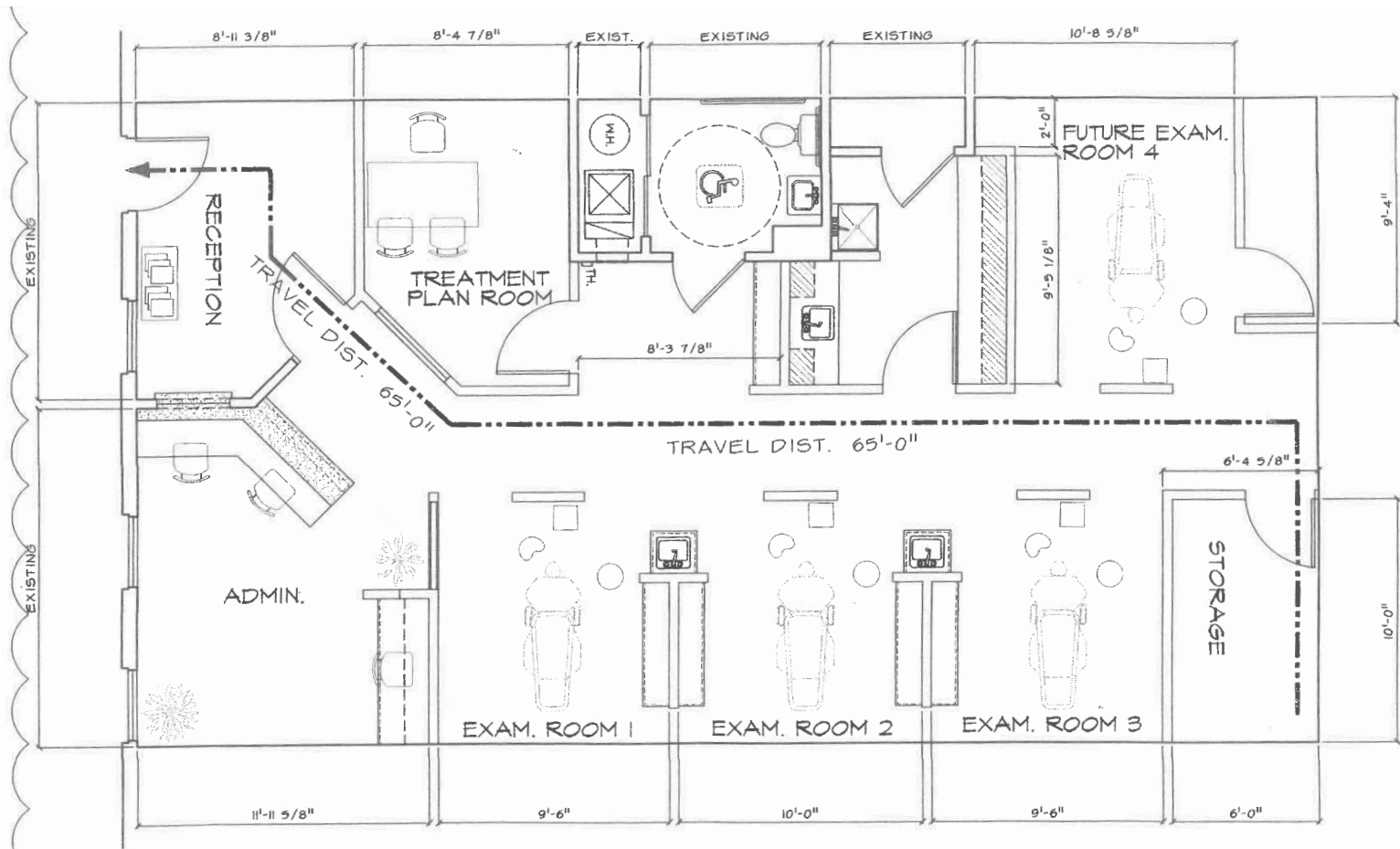


LEASE WITH  
PURCHASE  
OPTION  
AVAILABLE



GOOGLE STREET VIEW

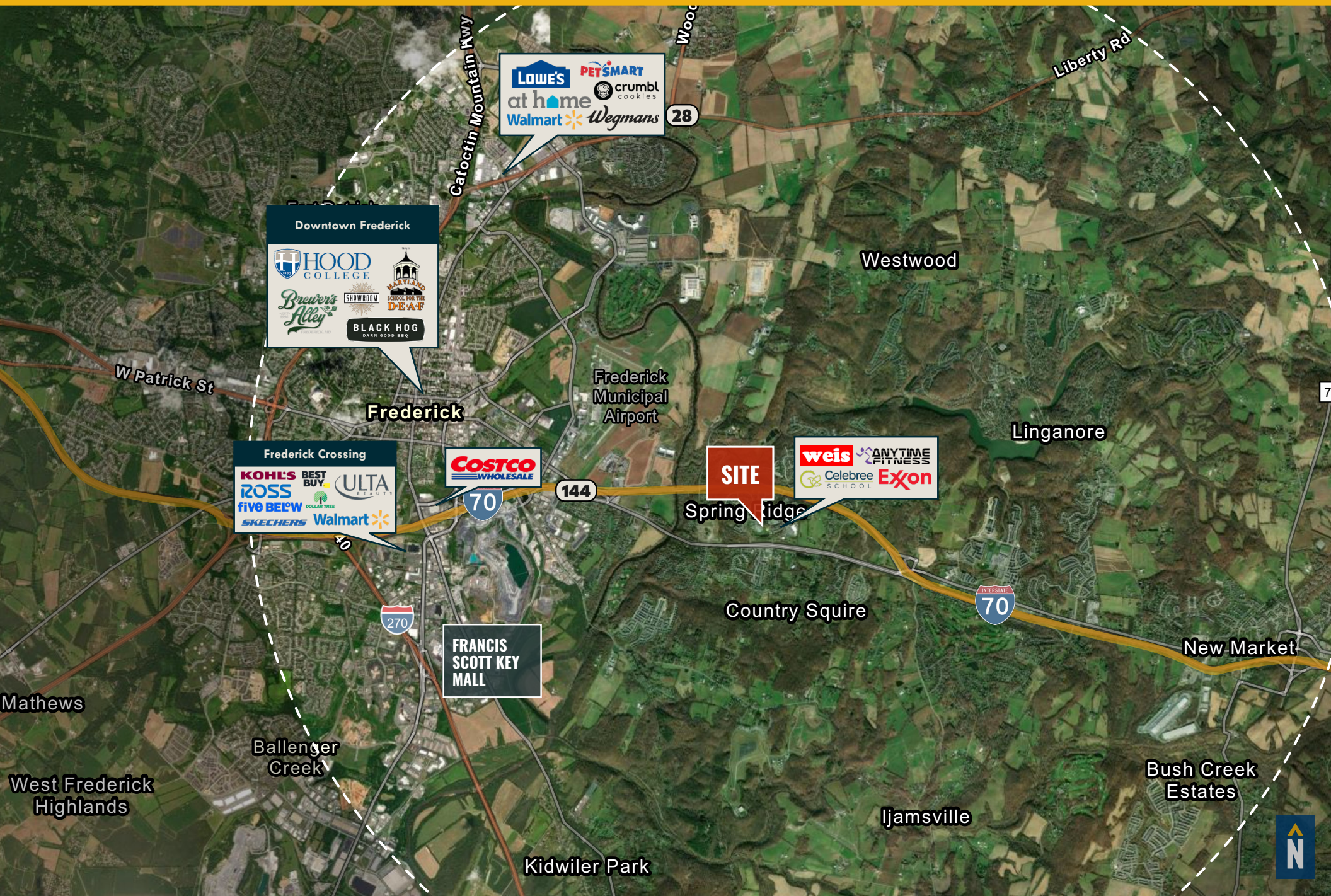
# FLOOR PLAN



# INTERIOR PHOTOS



# TRADE AREA



# FOR MORE INFO **CONTACT:**



## **DENNIS BOYLE, SIOR**

*SENIOR VICE PRESIDENT*

**443.798.9339**

**DBOYLE@mackenziecommercial.com**



## **GRAHAM SEVY**

*REAL ESTATE ADVISOR*

**410.830.1399**

**GSEVY@mackenziecommercial.com**



VISIT **PROPERTY PAGE** FOR MORE INFORMATION.





# **MACKENZIE**

COMMERCIAL REAL ESTATE SERVICES, LLC

**410-872-0400**  
10175 Little Patuxent Parkway, Suite 902  
Columbia, MD 21044

OFFICES IN:   ANNAPOLIS, MD   BALTIMORE, MD   BEL AIR, MD   **COLUMBIA, MD**   LUTHERVILLE, MD   CHARLOTTESVILLE, VA

**www.MACKENZIECOMMERCIAL.com**

No warranty or representation, expressed or implied, is made as to the accuracy of the information contained herein, and same is submitted subject to errors, omissions, change of price, rental or other conditions, withdrawal without notice, and to any specific listing conditions imposed by our principals.