

# SALE/LEASE

Harford County, Maryland

NEW  
RETAIL  
STOREFRONT  
CONCEPT

YOUR SIGN HERE

FREESTANDING  
**RETAIL**

911 ONTARIO STREET  
HAVRE DE GRACE, MD 21078

SUBMIT  
**ALL**  
OFFERS!

 **MACKENZIE**  
RETAIL

**John Harrington**  
☎ 410.494.4863  
✉ [jharrington@mackenziecommercial.com](mailto:jharrington@mackenziecommercial.com)  
MacKenzie Commercial Real Estate Services, LLC • 410-821-8585

**John Schultz**  
☎ 410.494.4894  
✉ [jschultz@mackenziecommercial.com](mailto:jschultz@mackenziecommercial.com)

**Tim Harrington**  
☎ 410.494.4855  
✉ [timharrington@mackenziecommercial.com](mailto:timharrington@mackenziecommercial.com)  
www.MACKENZIECOMMERCIAL.com

# SALE/LEASE

Harford County, Maryland

# CORNER FREESTANDING RETAIL BUILDING

911 ONTARIO STREET | HAVRE DE GRACE, MARYLAND 21078

## BUILDING SIZE

2,760 sf

## LOT SIZE

.45 Acres

## ZONING

RB (Residential Business District)

## TRAFFIC COUNT

15,561 AADT (Ohio St/Rt. 155)

28,270 AADT (Pulaski Hwy/Rt. 40)

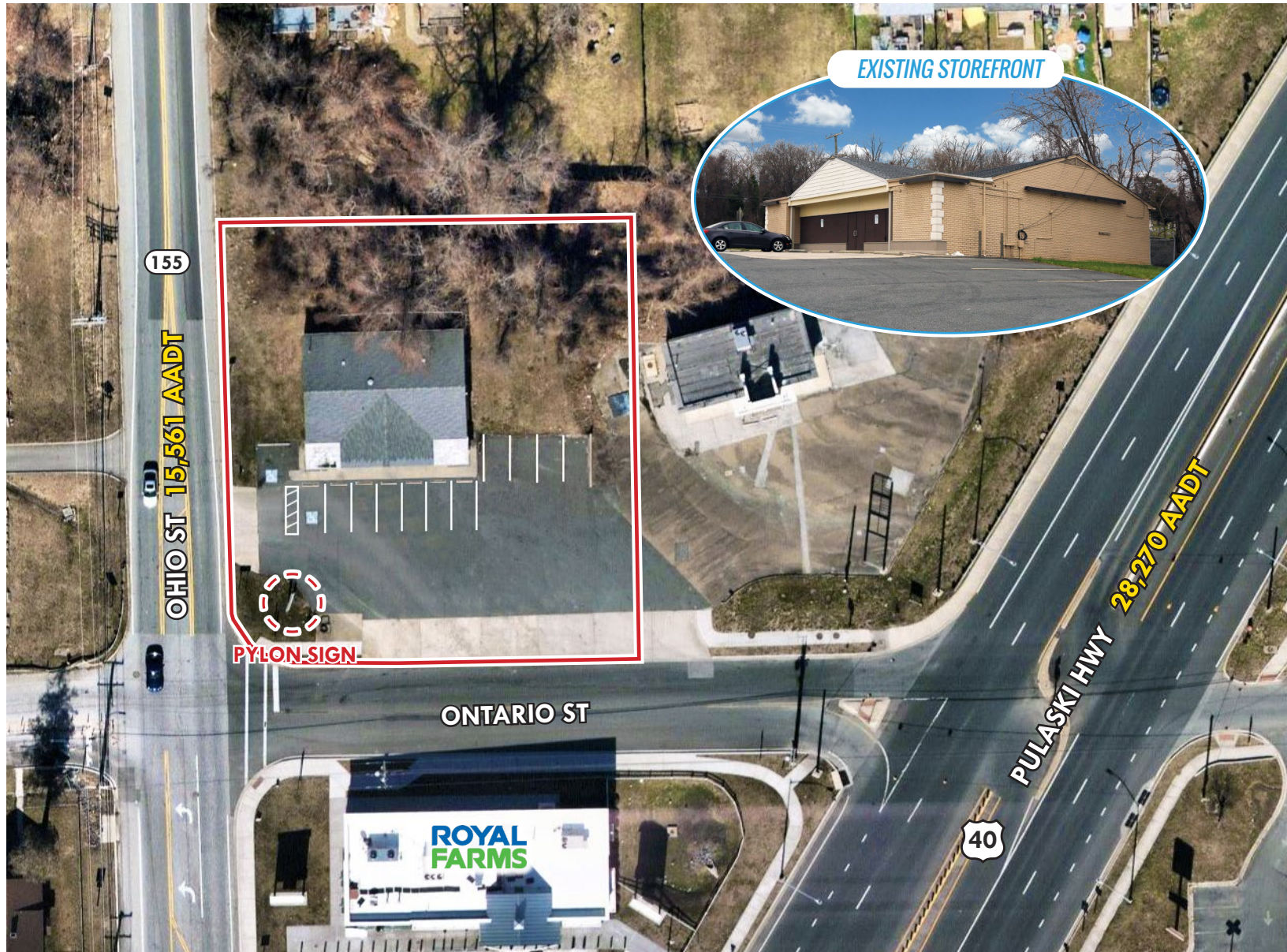
## RENTAL RATE

\$3,000/mo. (Gross)

(CAM/Insurance/Taxes: Included)

## HIGHLIGHTS

- ▶ High visibility corner location at the intersection of Ontario Street and Ohio Street (Rt. 155)
- ▶ Across from Royal Farms gas and convenience
- ▶ Immediate access to Pulaski Highway (Rt. 40) and the Hatem Memorial Bridge
- ▶ Easy/convenient access to I-95
- ▶ Large pylon sign



John Harrington

410.494.4863

jharrington@mackenziecommercial.com

Mackenzie Commercial Real Estate Services, LLC

John Schultz

410.494.4894

jschultz@mackenziecommercial.com

821-8585

2328 W. Joppa Road, Suite 200 | Lutherville-Timonium, Maryland 21093

Tim Harrington

410.494.4855

timharrington@mackenziecommercial.com

www.MACKENZIECOMMERCIAL.com

# SALE/LEASE

Harford County, Maryland

# BIRDSEYE

911 ONTARIO STREET | HAVRE DE GRACE, MARYLAND 21078



**John Harrington**  
 ☎ 410.494.4863  
 ✉ [jharrington@mackenziecommercial.com](mailto:jharrington@mackenziecommercial.com)  
 Mackenzie Commercial Real Estate Services, LLC • 410-821-8585

**John Schultz**  
 ☎ 410.494.4894  
 ✉ [jschultz@mackenziecommercial.com](mailto:jschultz@mackenziecommercial.com)

**Tim Harrington**  
 ☎ 410.494.4855  
 ✉ [timharrington@mackenziecommercial.com](mailto:timharrington@mackenziecommercial.com)  
 www.MACKENZIECOMMERCIAL.com

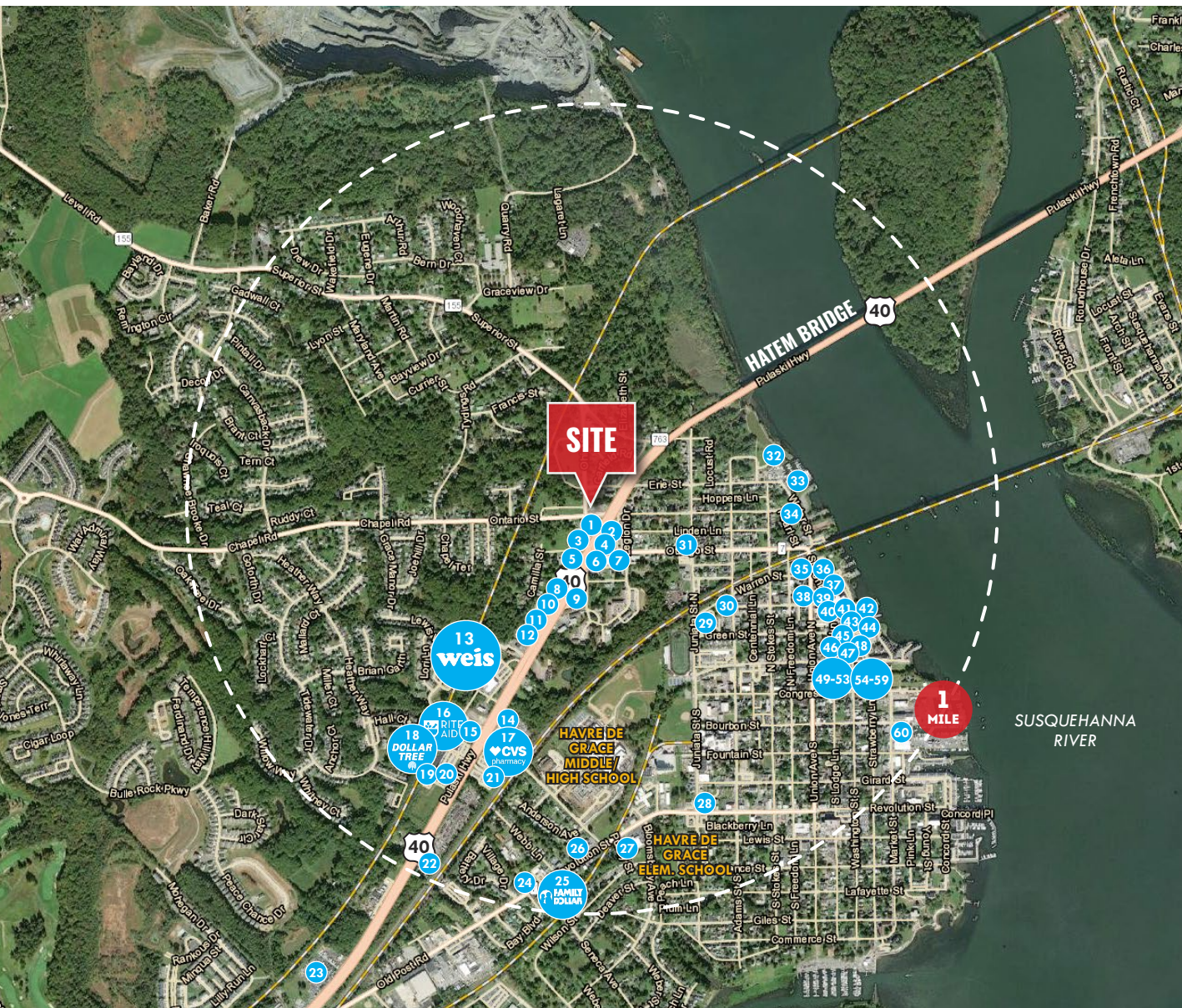
# SALE/LEASE

Harford County, Maryland

# HAVRE DE GRACE TRADE AREA

911 ONTARIO STREET | HAVRE DE GRACE, MARYLAND 21078

- 1 ROYAL FARMS
- 2 MCDONALD'S
- 3 PIZZA HUT
- 4 WAFFLE HOUSE
- 5 CROWN GAS
- 6 VERIZON WIRELESS
- 7 MARIA'S PIZZA
- 8 CHESAPEAKE GRILL
- 9 BEST BUDGET ININ
- 10 RIVER CITY CRABS & SEAFOOD
- 11 THE BAYOU RESTAURANT
- 12 SUPER 8 BY WYNDAHM
- 13 WEIS MARKETS
- 14 BURGER KING
- 15 BP GAS
- 16 RITE AID
- 17 CVS
- 18 DOLLAR TREE
- 19 SUBWAY
- 20 DUNKIN'
- 21 THE FITNESS CENTER OF HAVRE DE GRACE
- 22 A-1 AUTO PARTS
- 23 ADAMS CHEVROLET
- 24 PATI'S PIZZERIA & GRILL
- 25 FAMILY DOLLAR
- 26 HAVRE DE GRACE TIRE & AUTO
- 27 HARFORD BANK
- 28 ROYAL FARMS
- 29 U.S. POST OFFICE
- 30 EAST COAST TIRE



- 31 NONNIE'S BRICK OVER PIZZA
- 32 LOCK HOUSE MUSEUM
- 33 HAVRE DE GRACE MARINA
- 34 WATER STREET SEAFOOD
- 35 7-ELEVEN
- 36 AMERICAN LEGION
- 37 BELLA'S TEA ROOM
- 38 BACKFIN BLUES CREOLE DE GRAW
- 39 COAKLEY'S PUB
- 40 BLUE HERON GIFTS & ANTIQUES
- 41 MACGREGOR'S
- 42 TIDEWATER GRILLE
- 43 LA BANQUE DE FLUEVE
- 44 SWEET EATS CAKES
- 45 PNC BANK
- 46 GOLL'S BAKERY
- 47 ABBEY BURGER HDG
- 48 CONCORD POINT COFFEE
- 49 THE VINEYARD WINE BAR
- 50 JOSEPH'S DEPARTMENT STORE
- 51 JAVA BY THE BAY2
- 52 VINTAGE CAFE
- 53 LES PETITS BISOU
- 54 FOUND VINTAGE CO.
- 55 WASHINGTON STREET BOOKS & MUSIC
- 56 A TASTE OF THE TEAL ANTLER
- 57 BOCAMEXA TAQUERIA
- 58 LA CUCINA
- 59 BATTERY ISLAND BREWING CO.
- 60 TIDEWATER MARINA



**John Harrington**  
 410.494.4863  
 jharrington@mackenziecommercial.com  
 MacKenzie Commercial Real Estate Services, LLC

**John Schultz**  
 410.494.4894  
 jschultz@mackenziecommercial.com

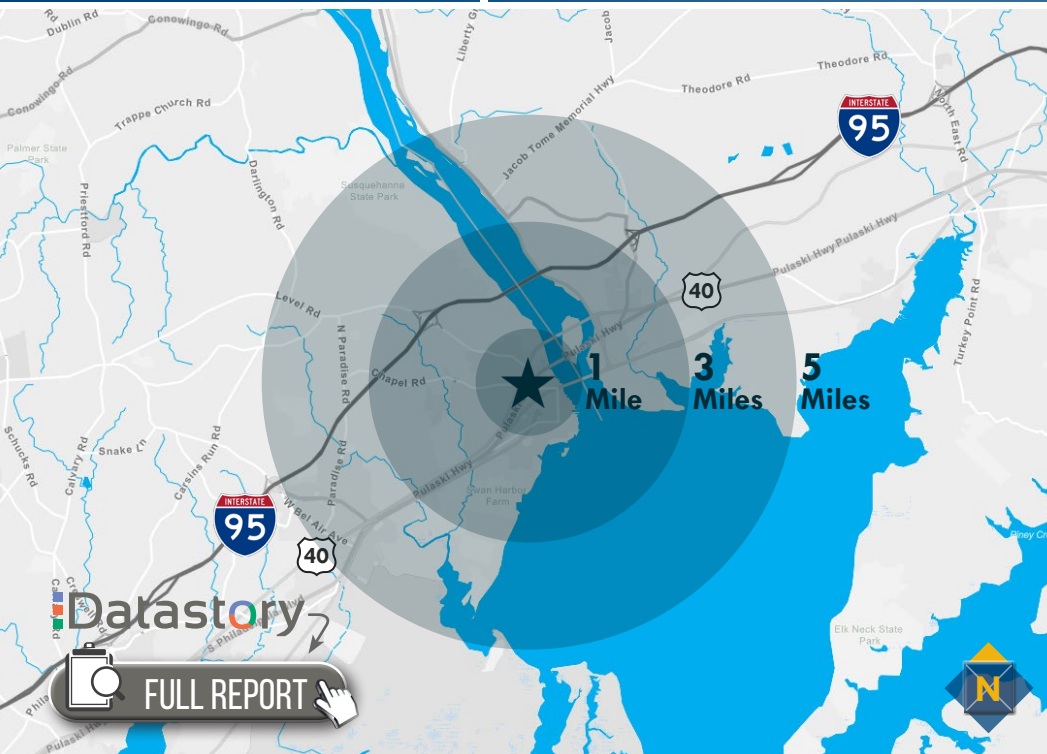
**Tim Harrington**  
 410.494.4855  
 timharrington@mackenziecommercial.com

# SALE/LEASE

Harford County, Maryland

# LOCATION / DEMOGRAPHICS (2021)

911 ONTARIO STREET | HAVRE DE GRACE, MARYLAND 21078



<b>RESIDENTIAL POPULATION</b> 8,140 1 MILE 22,233 3 MILES 40,153 5 MILES	<b>NUMBER OF HOUSEHOLDS</b> 3,249 1 MILE 8,911 3 MILES 15,648 5 MILES	<b>AVERAGE HH SIZE</b> 2.45 1 MILE 2.43 3 MILES 2.52 5 MILES	<b>MEDIAN AGE</b> 41.6 1 MILE 44.7 3 MILES 42.7 5 MILES
<b>AVERAGE HH INCOME</b> \$97,117 1 MILE \$109,876 3 MILES \$100,251 5 MILES	<b>EDUCATION (COLLEGE+)</b> 61.4% 1 MILE 67.1% 3 MILES 62.3% 5 MILES	<b>EMPLOYMENT (AGE 16+ IN LABOR FORCE)</b> 90.0% 1 MILE 93.1% 3 MILES 93.4% 5 MILES	<b>DAYTIME POPULATION</b> 8,604 1 MILE 23,279 3 MILES 40,736 5 MILES

**27%**  
**WORKDAY DRIVE**  
2 MILES

Life in the suburban wilderness offsets the hectic pace of two working parents with growing children for this affluent, family-oriented market. They favor time-saving devices and like banking online.

**16%**  
**GOLDEN YEARS**  
2 MILES

Independent, active seniors nearing the end of their careers or already in retirement, these consumers actively pursue a variety of leisure interests—travel, sports, dining out, museums and concerts.

**14%**  
**PARKS AND REC**  
2 MILES

Many of these families are two-income married couples approaching retirement age. They are comfortable in their jobs and their homes and budget wisely, but do not plan on retiring anytime soon or moving.

**14%**  
**SET TO IMPRESS**  
2 MILES

Nearly 1 in 3 of these residents is 20 to 34 years old. Quick meals on the run are a reality for this group, who prefer name brands, but will buy generic for a better deal. Image-conscious, they like to dress to impress.

**2.97**  
AVERAGE HH SIZE

**37.0**  
MEDIAN AGE

**\$90,500**  
MEDIAN HH INCOME

[LEARN MORE](#)

**2.06**  
AVERAGE HH SIZE

**52.3**  
MEDIAN AGE

**\$71,700**  
MEDIAN HH INCOME

[LEARN MORE](#)

**2.51**  
AVERAGE HH SIZE

**40.9**  
MEDIAN AGE

**\$60,000**  
MEDIAN HH INCOME

[LEARN MORE](#)

**2.12**  
AVERAGE HH SIZE

**33.9**  
MEDIAN AGE

**\$32,800**  
MEDIAN HH INCOME

[LEARN MORE](#)



**John Harrington**  
 410.494.4863  
 jharrington@mackenziecommercial.com

**John Schultz**  
 410.494.4894  
 jschultz@mackenziecommercial.com

**Tim Harrington**  
 410.494.4855  
 timharrington@mackenziecommercial.com

No warranty or representation, expressed or implied, is made as to the accuracy of the information contained herein, and same is submitted subject to errors, omissions, change of price, rental or other conditions, withdrawal without notice, and to any specific listing conditions imposed by our principals.



EXISTING STOREFRONT



**JOHN HARRINGTON**

SENIOR VICE PRESIDENT & PRINCIPAL  
MACKENZIE RETAIL, LLC

**410.494.4863**

[JHARRINGTON@MACKENZIECOMMERCIAL.COM](mailto:JHARRINGTON@MACKENZIECOMMERCIAL.COM)



**JOHN SCHULTZ**

SENIOR VICE PRESIDENT & PRINCIPAL  
MACKENZIE RETAIL, LLC

**410.494.4894**

[JSCHULTZ@MACKENZIECOMMERCIAL.COM](mailto:JSCHULTZ@MACKENZIECOMMERCIAL.COM)



**TIM HARRINGTON**

REAL ESTATE ADVISOR  
MACKENZIE RETAIL, LLC

**410.494.4855**

[TIMHARRINGTON@MACKENZIECOMMERCIAL.COM](mailto:TIMHARRINGTON@MACKENZIECOMMERCIAL.COM)

MacKenzie Commercial Real Estate Services, LLC • 410-821-8585 • 2328 W. Joppa Road, Suite 200 | Lutherville, Maryland 21093 • [www.MACKENZIECOMMERCIAL.com](http://www.MACKENZIECOMMERCIAL.com)

No warranty or representation, expressed or implied, is made as to the accuracy of the information contained herein, and same is submitted subject to errors, omissions, change of price, rental or other conditions, withdrawal without notice, and to any specific listing conditions imposed by our principals.