



914 MIDDLE RIVER ROAD

BALTIMORE, MARYLAND 21220

FOR
SALE



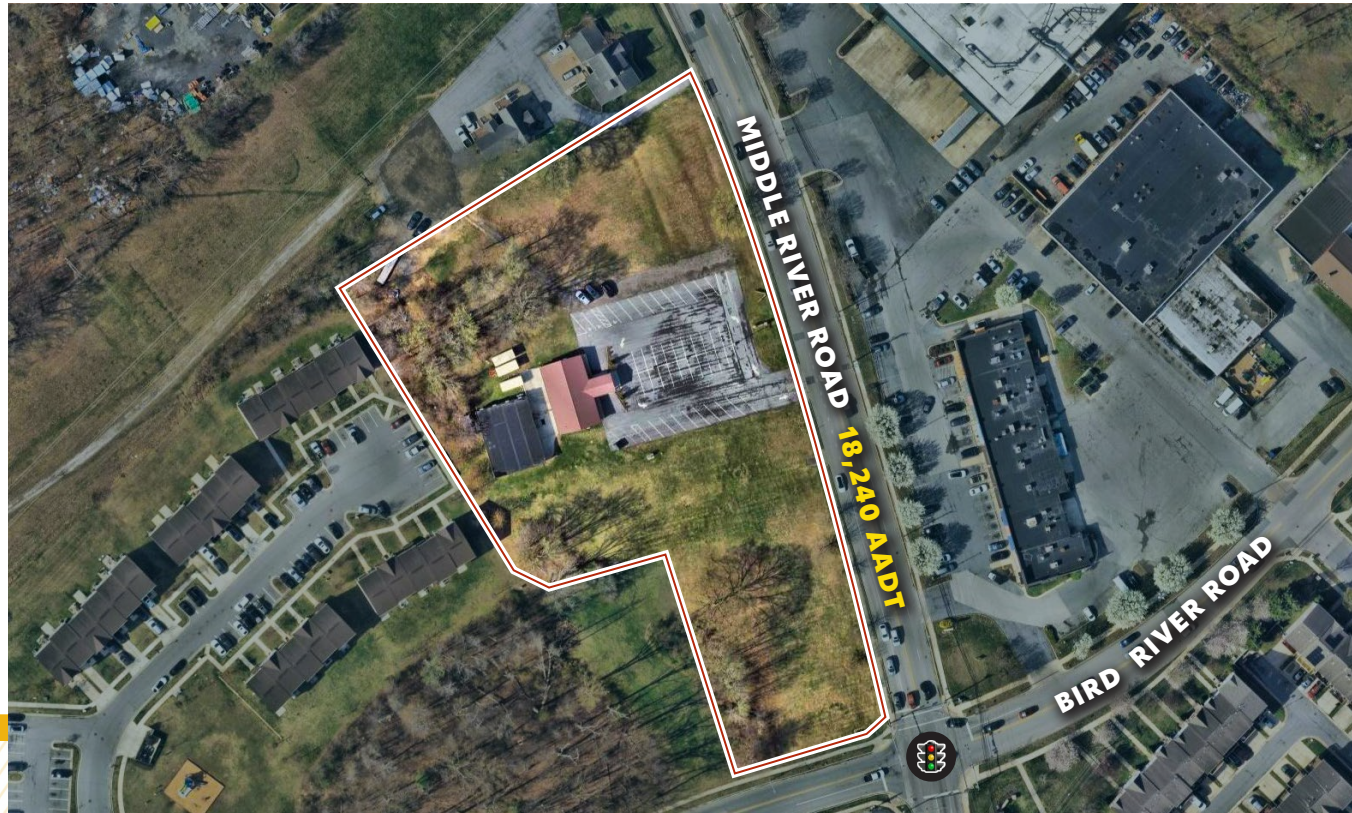
MACKENZIE

COMMERCIAL REAL ESTATE SERVICES, LLC

PROPERTY OVERVIEW

HIGHLIGHTS:

- Former religious facility for sale
- Easy access to Route 40, I-695, and I-95
- High visibility location on Middle River Road (18,240 AADT)
- Monument signage available
- Ample parking



BUILDING SIZE:	6,500 SF ±
LOT SIZE:	3.34 ACRES ±
YEAR BUILT:	1983
PARKING:	50 SURFACE SPACES
TRAFFIC COUNT:	18,240 AADT (MIDDLE RIVER ROAD)
ZONING:	DR 3.5
SALE PRICE:	\$1,500,000

MARKET AERIAL



DEMOGRAPHICS

2025

RADIUS:

1 MILE

2 MILES

3 MILES

RESIDENTIAL POPULATION



18,286

43,070

83,792

DAYTIME POPULATION



13,344

50,072

83,305

AVERAGE HOUSEHOLD INCOME



\$97,956

\$100,865

\$105,217

NUMBER OF HOUSEHOLDS



6,622

16,513

32,794

MEDIAN AGE

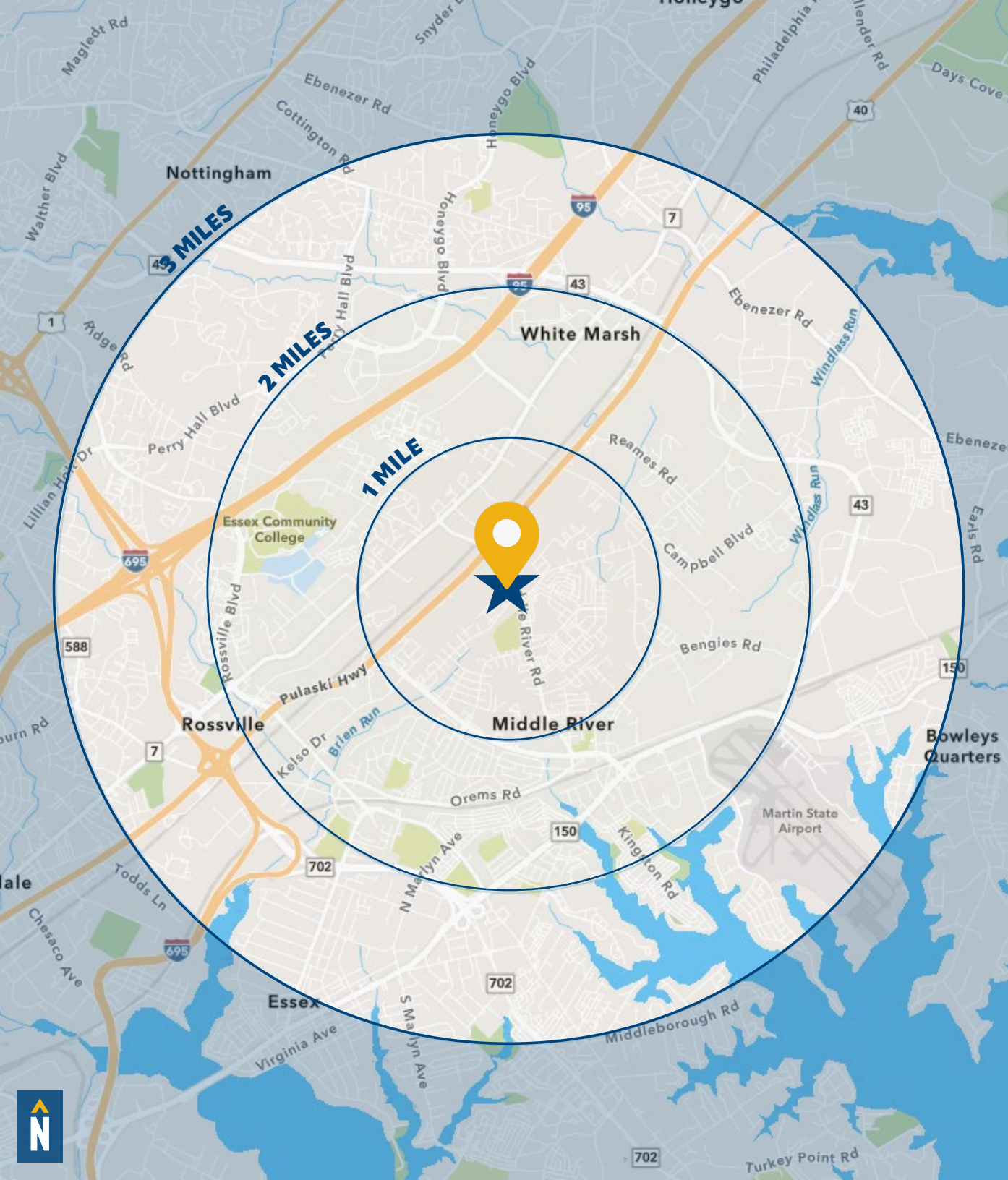


35.1

37.7

38.9

[FULL DEMOS REPORT](#)



FOR MORE INFO **CONTACT:**



TOM MOTTLEY

SENIOR VICE PRESIDENT & PRINCIPAL

443.573.3217

TMOTTLEY@mackenziecommercial.com



JOHN MICHAEL

REAL ESTATE ADVISOR

443.573.3207

JMICHAEL@mackenziecommercial.com



MACKENZIE

COMMERCIAL REAL ESTATE SERVICES, LLC

410-879-1900

**3465 Box Hill Corporate Center Drive, Suite F
Abingdon, MD 21009**

OFFICES IN: ANNAPOLIS, MD BALTIMORE, MD **BEL AIR, MD** COLUMBIA, MD LUTHERVILLE, MD CHARLOTTESVILLE, VA

www.MACKENZIECOMMERCIAL.com



VISIT PROPERTY PAGE FOR MORE INFORMATION



No warranty or representation, expressed or implied, is made as to the accuracy of the information contained herein, and same is submitted subject to errors, omissions, change of price, rental or other conditions, withdrawal without notice, and to any specific listing conditions imposed by our principals.