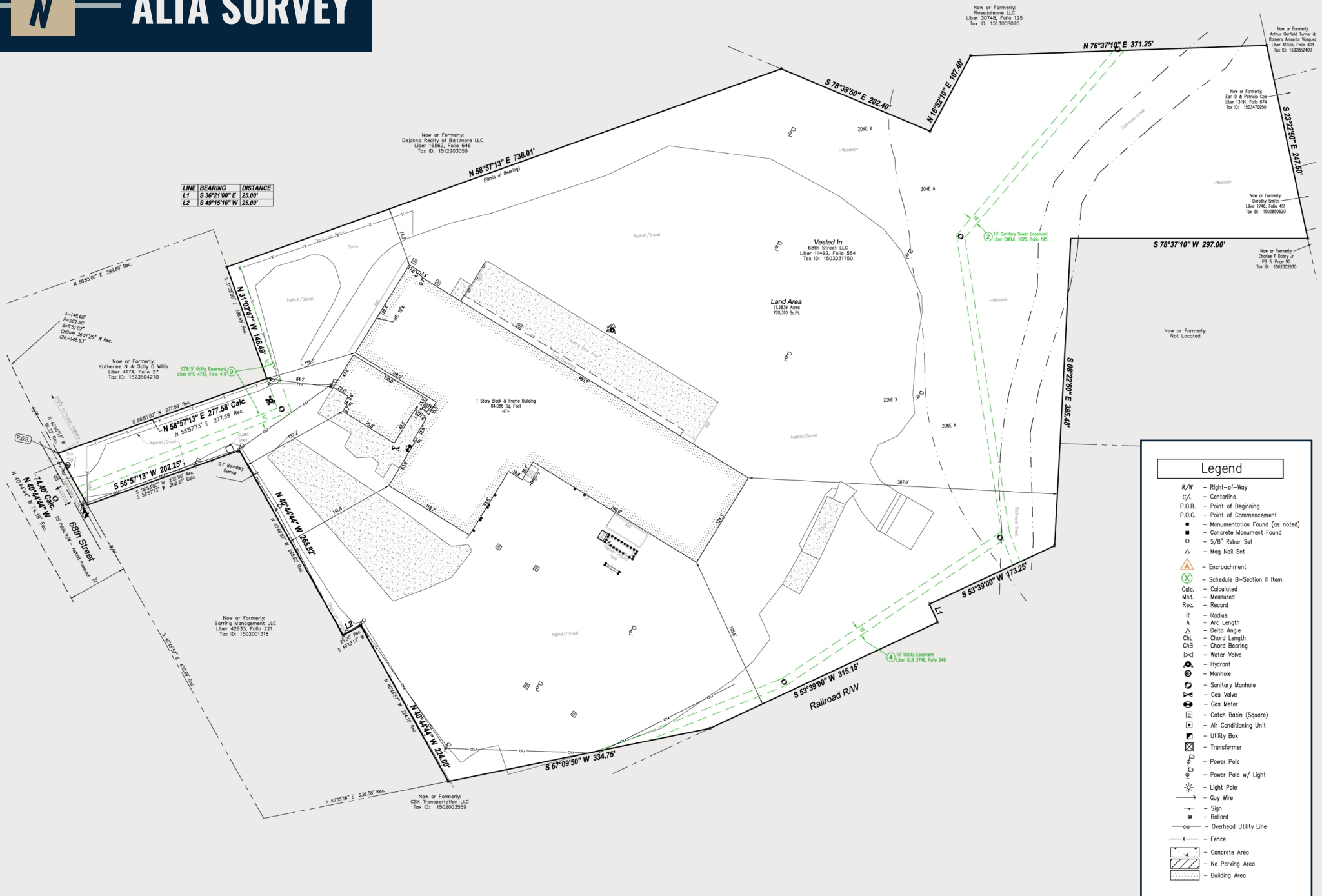




ALTA SURVEY

LINE	BEARING	DISTANCE
L1	S 36°21'00" E	25.00'
L2	S 49°15'16" W	25.00'



Legend

- R/W - Right-of-Way
- C/L - Centerline
- P.O.B. - Point of Beginning
- P.O.C. - Point of Commencement
- - Monumentation Found (as noted)
- - Concrete Monument Found
- - 5/8" Rebar Set
- △ - Mog Nail Set
- ⚠ - Encroachment
- X - Schedule B-Section II Item
- Calc. - Calculated
- Med. - Measured
- Rec. - Record
- R - Radius
- A - Arc Length
- Δ - Delta Angle
- CHL - Chord Length
- ChB - Chord Bearing
- W - Water Valve
- H - Hydrant
- M - Manhole
- SM - Sanitary Manhole
- CV - Gas Valve
- GM - Gas Meter
- CB - Catch Basin (Square)
- AU - Air Conditioning Unit
- UB - Utility Box
- TR - Transformer
- PP - Power Pole
- PL - Power Pole w/ Light
- LP - Light Pole
- GW - Guy Wire
- SN - Sign
- B - Ballard
- OU - Overhead Utility Line
- F - Fence
- CA - Concrete Area
- NPA - No Parking Area
- BA - Building Area

Now or Formerly
Dejanna Realty of Baltimore LLC
Liber 15562, Folio 646
Tax ID: 1512203050

Now or Formerly
Roadside LLC
Liber 30748, Folio 125
Tax ID: 1513008070

Now or Formerly
Arthur Cortez Turner &
Romero Amador Vasquez
Liber 4106, Folio 483
Tax ID: 150882400

Now or Formerly
East 13 1/2 Patricia Coe
Liber 1319, Folio 674
Tax ID: 150419950

Now or Formerly
Dejanna Realty
Liber 1146, Folio 452
Tax ID: 150280623

Now or Formerly
Charles F Babay Jr
99 1/2 Page 59
Tax ID: 1502002830

Now or Formerly
Katherine N & Soly G Mills
Liber 4174, Folio 27
Tax ID: 1523504270

Vested In
68th Street LLC
Liber 11462, Folio 354
Tax ID: 1503231750

Land Area
17,838 Acres
770,190 Sq.Ft.

Now or Formerly
Barrington Management LLC
Liber 42833, Folio 221
Tax ID: 1502001318

Now or Formerly
CSX Transportation LLC
Tax ID: 1502003559