

FOR LEASE

Baltimore County, MD

1001 CROMWELL BRIDGE ROAD

TOWSON, MARYLAND 21286

AVAILABLE

Suite 200: 3,601 sf*

Suite 212: 2,513 sf

Suite 300: 5,022 sf*

*Contiguous up to 8,623 sf

RENTAL RATE

\$17.50/sf, MG

OCCUPANCY

Suites 212: Negotiable

Suites 200 & 300: 60 days

NEARBY AMENITIES

Dining, retail, banking, and personal services

HIGHLIGHTS

- ▶ Convenient location with great access to I-695 and Downtown Towson
- ▶ Close proximity to Towson Town Center, Towson University, Goucher College, and Towson Square
- ▶ Tenants have 24 hour access to the building
- ▶ Building is elevator served



STREET VIEW



\$2/SF BROKER BONUS FOR COOPERATING BROKER



MACKENZIE

COMMERCIAL REAL ESTATE SERVICES, LLC

Matt Mueller

☎ 410.494.6658

✉ mmueller@mackenziecommercial.com

Henson Ford

☎ 410.494.6657

✉ hford@mackenziecommercial.com

Bill Whitty

☎ 410.494.4862

✉ bwhitty@mackenziecommercial.com

Joe Bradley

☎ 410.494.4892

✉ jbradley@mackenziecommercial.com

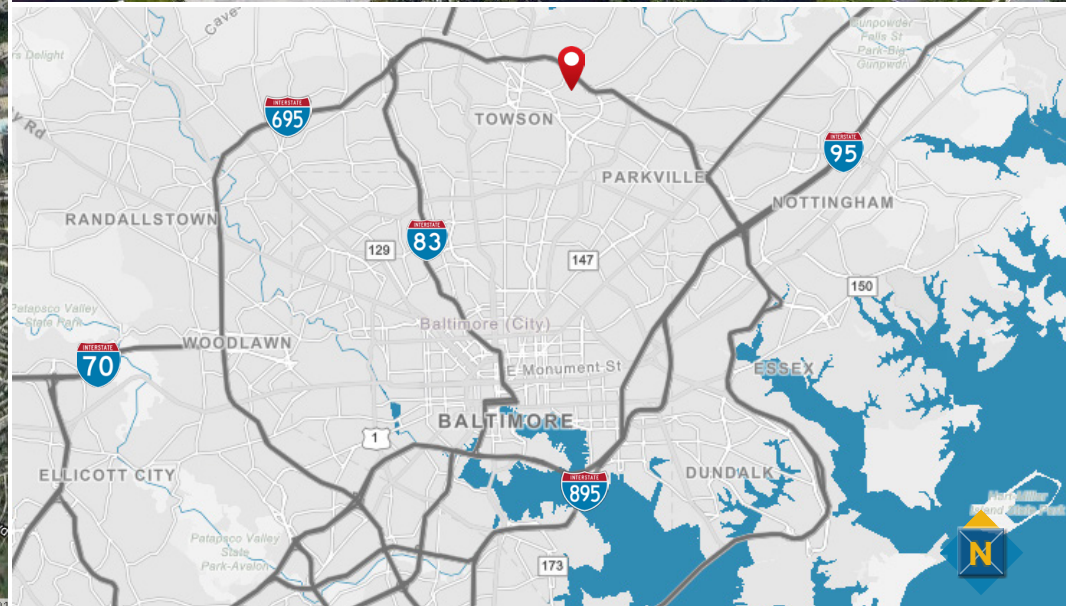
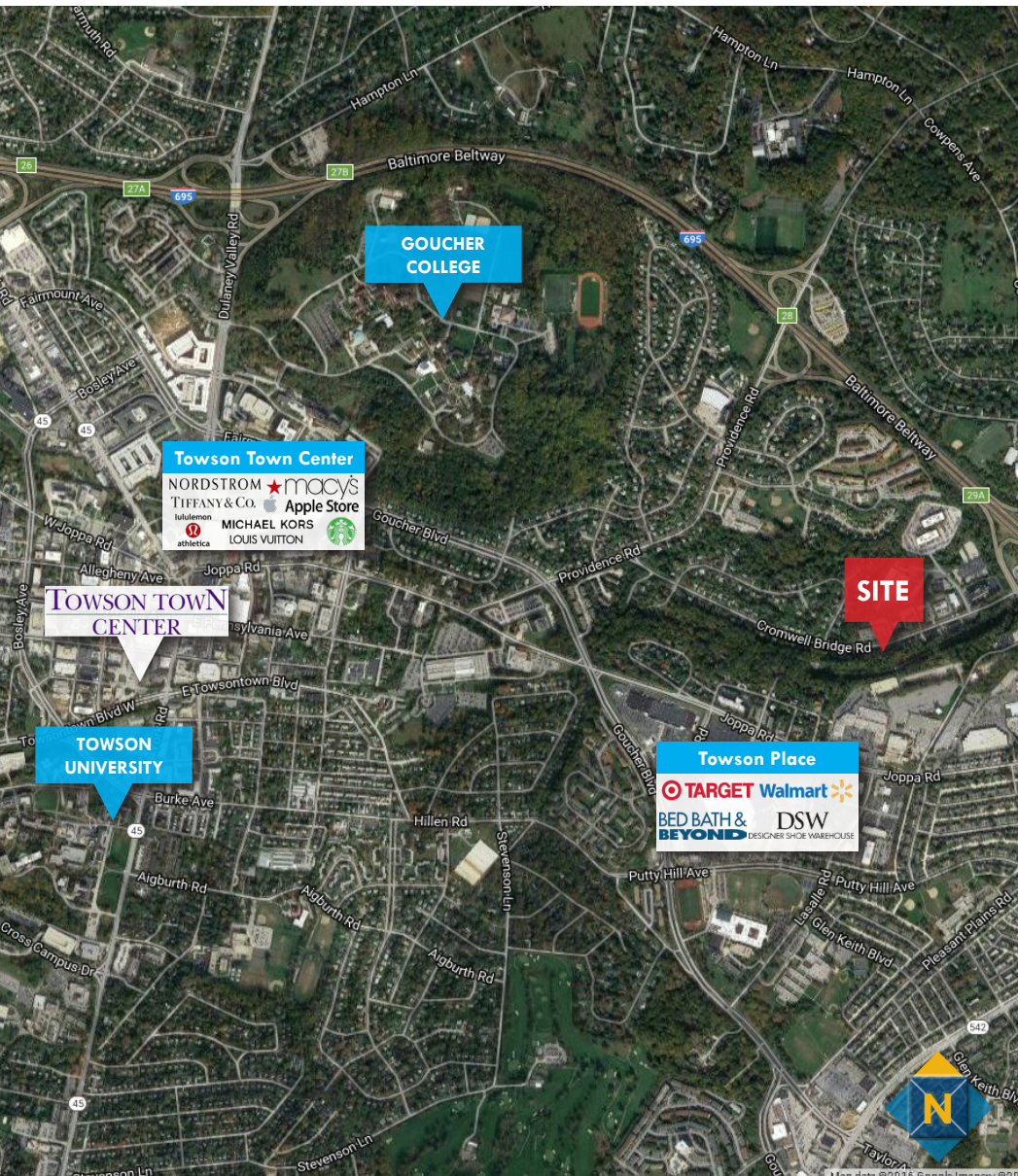
Mackenzie Commercial Real Estate Services, LLC • 410-821-8585 • 2328 W. Joppa Road, Suite 200 | Lutherville-Timonium, Maryland 21093 • www.MACKENZIECOMMERCIAL.com

FOR LEASE

Baltimore County, MD

LOCATION

1001 CROMWELL BRIDGE ROAD | TOWSON, MARYLAND 21286



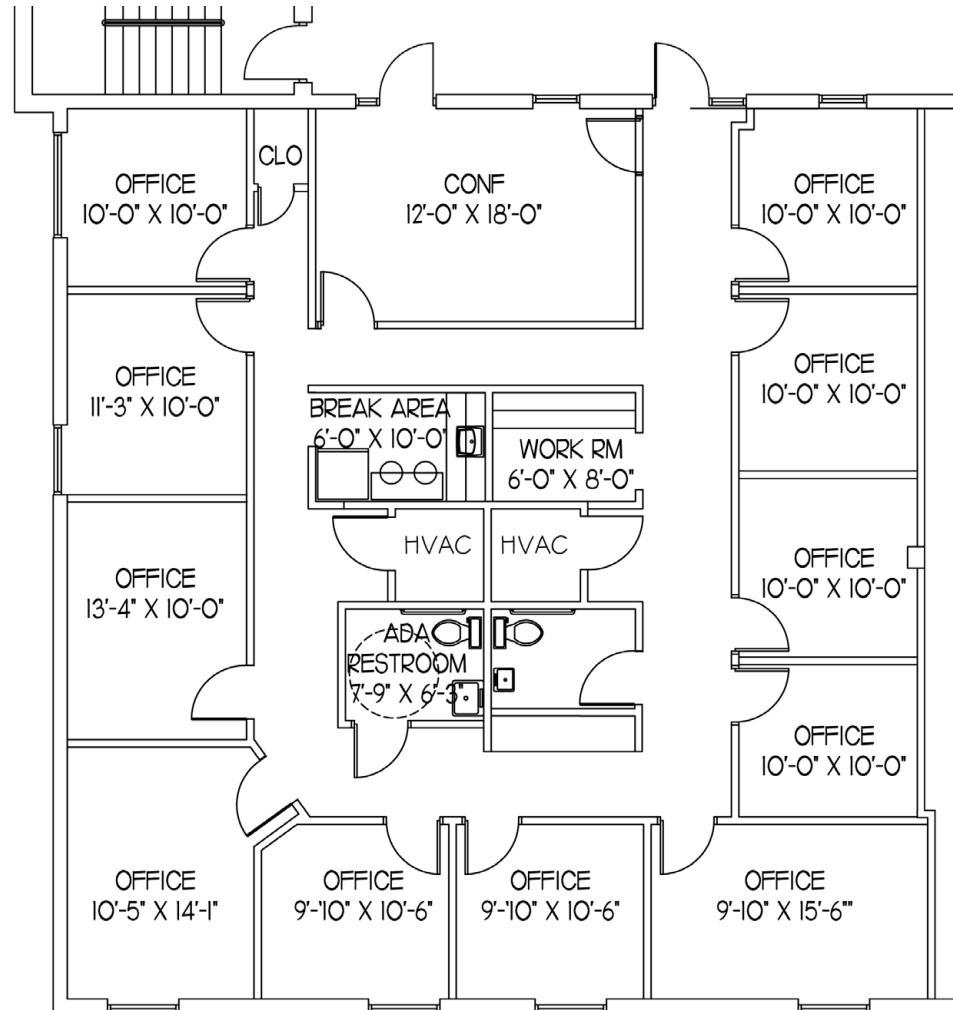
FOR LEASE

Baltimore County, MD

FLOOR PLAN

1001 CROMWELL BRIDGE ROAD | TOWSON, MARYLAND 21286

SUITE 212
2,513 sf



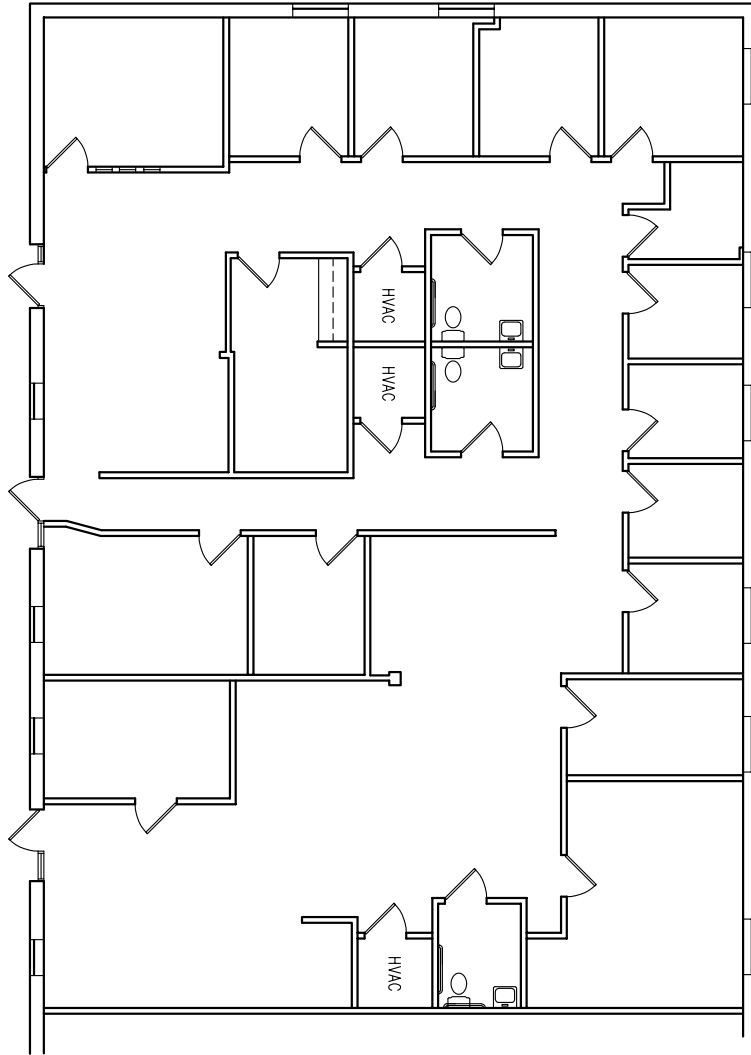
FOR LEASE

Baltimore County, MD

FLOOR PLAN

1001 CROMWELL BRIDGE ROAD | TOWSON, MARYLAND 21286

SUITE 200
3,601 sf



SUITE 300
5,022 sf

