



1912 LIBERTY ROAD

ELDERSBURG, MARYLAND 21784

FOR
LEASE



MACKENZIE

COMMERCIAL REAL ESTATE SERVICES, LLC

PROPERTY OVERVIEW

HIGHLIGHTS:

- Consisting of three buildings with a combination of retail and offices spaces
- Abundant parking provided
- Located on Liberty Road in the heart of Eldersburg with great exposure and high daily traffic counts
- Close to many amenities
- Attractive rental rate

AVAILABLE:

BUILDING 1:
SUITE 8 - 1,154 SF

BUILDING 3:
SUITE 30 P - 65 SF

PARKING:

7.27/1,000 SF

RENTAL RATE:

BUILDING 1:
SUITE 8 - \$20.80 SF, MG

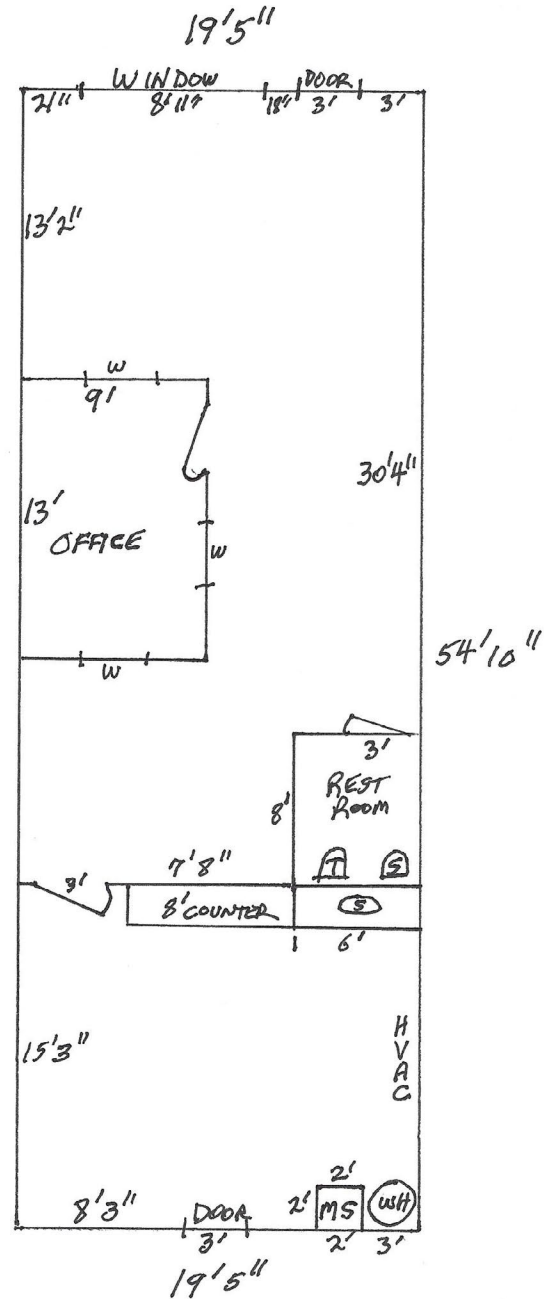
BUILDING 3:
SUITE 30 P - \$200/MONTH



GOOGLE STREET VIEW

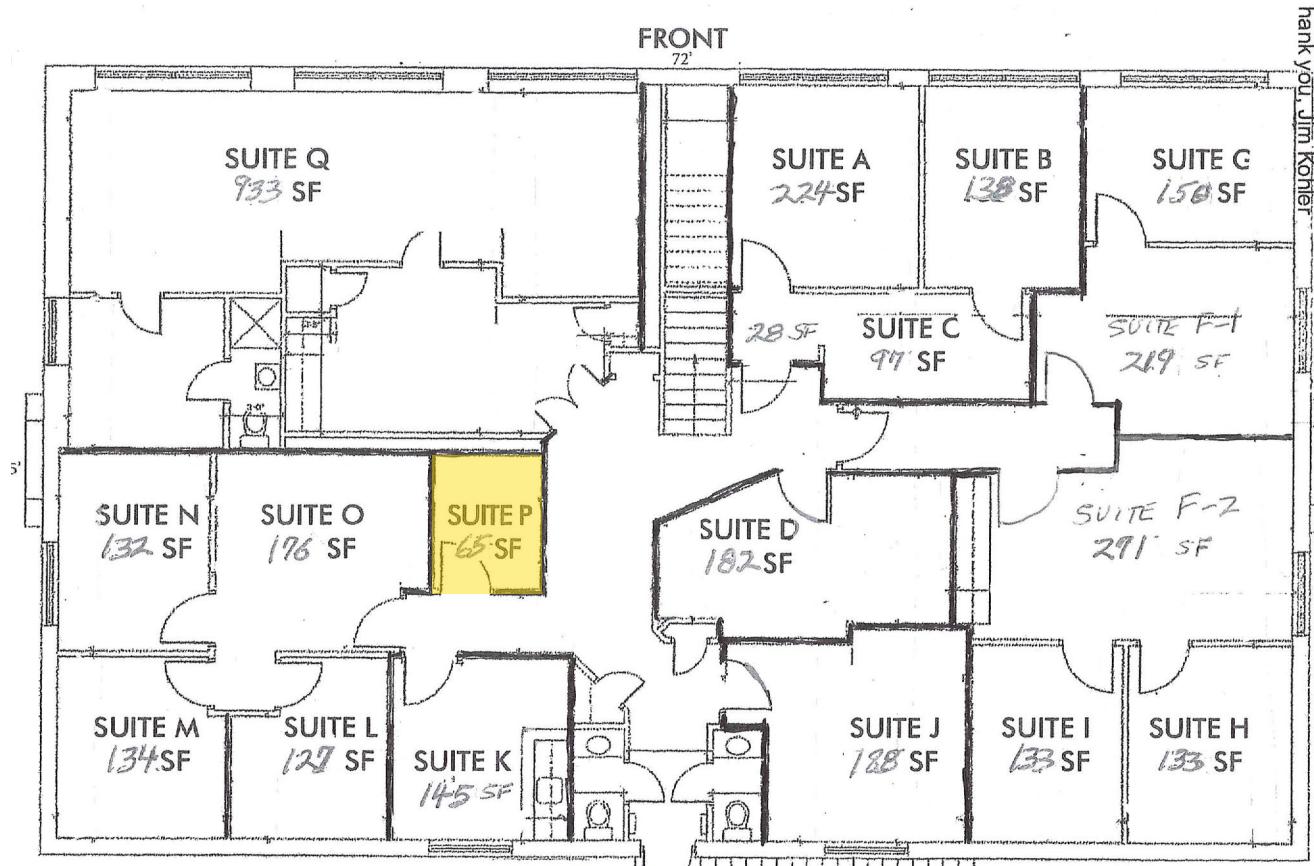


**SUITE 8:
1,154 SF**



FLOOR PLAN - BUILDING 3

SUITE 30 P: 65 SF



LOCAL AERIAL



DEMOGRAPHICS

2023

RADIUS:

1 MILE

3 MILES

5 MILES

RESIDENTIAL POPULATION



8,379

27,429

43,414

DAYTIME POPULATION



7,916

22,626

34,327

AVERAGE HOUSEHOLD INCOME



\$179,365

\$177,765

\$179,892

NUMBER OF HOUSEHOLDS



3,175

9,684

15,299

MEDIAN AGE



43.0

41.2

42.9

FULL DEMOS REPORT



FOR MORE INFO **CONTACT:**



DENNIS BOYLE

SENIOR VICE PRESIDENT

443.798.9339

DBOYLE@mackenziecommercial.com



MACKENZIE

COMMERCIAL REAL ESTATE SERVICES, LLC

410-872-0400

10175 Little Patuxent Parkway, Suite 902
Columbia, MD 21044

OFFICES IN:

ANNAPOLIS

BALTIMORE

BEL AIR

COLUMBIA

LUTHERVILLE

www.MACKENZIECOMMERCIAL.com



VISIT **PROPERTY PAGE** FOR MORE INFORMATION.

No warranty or representation, expressed or implied, is made as to the accuracy of the information contained herein, and same is submitted subject to errors, omissions, change of price, rental or other conditions, withdrawal without notice, and to any specific listing conditions imposed by our principals.