

FOR LEASE

 Anne Arundel County, MD

THE PARKWAY BUILDING

200 HARRY S. TRUMAN PARKWAY | ANNAPOLIS, MARYLAND 21401

AVAILABLE

2nd floor: 2,737 - 6,074 sf

4th floor: 762 sf

RENTAL RATE

Withheld

PARKING RATIO

4 per 1,000 sf

OCCUPANCY

Immediate

HIGHLIGHTS

- ▶ High visibility along Riva Road and Harry S. Truman Parkway
- ▶ Close proximity to Anne Arundel County office buildings and Board of Education
- ▶ Immediate access to Rt. 50, I-97 and Aris T. Allen Boulevard
- ▶ Large conference and meeting room facilities available for tenants use
- ▶ Free on-site deck and surface parking



Trish Farrell

📞 410.974.9003

✉️ tfarrell@mackenziecommercial.com

MacKenzie Commercial Real Estate Services, LLC

E. Hayes Merkert, SIOR

📞 443.798.9344

✉️ hmerkert@mackenziecommercial.com

Bethany Hobbs

📞 410.953.0359

✉️ bhobbs@mackenziecommercial.com

• 410-974-9336 • 410 Severn Avenue | Annapolis, Maryland 21403 • www.MACKENZIECOMMERCIAL.com

FOR LEASE

Anne Arundel County, MD

NEWLY RENOVATED LOBBY AND COMMON AREA

200 HARRY S. TRUMAN PARKWAY | ANNAPOLIS, MARYLAND 21401



FOR LEASE

Anne Arundel County, MD

SHARED CONFERENCE ROOM FACILITIES

200 HARRY S. TRUMAN PARKWAY | ANNAPOLIS, MARYLAND 21401



 **MACKENZIE**
COMMERCIAL REAL ESTATE SERVICES, LLC

Trish Farrell
☎ 410.974.9003
✉ tfarrell@mackenziecommercial.com

E. Hayes Merkert, SIOR
☎ 443.798.9344
✉ hmerkert@mackenziecommercial.com

Bethany Hobbs
☎ 410.953.0359
✉ bhobbs@mackenziecommercial.com

FOR LEASE

Anne Arundel County, MD

2ND FLOOR PLAN

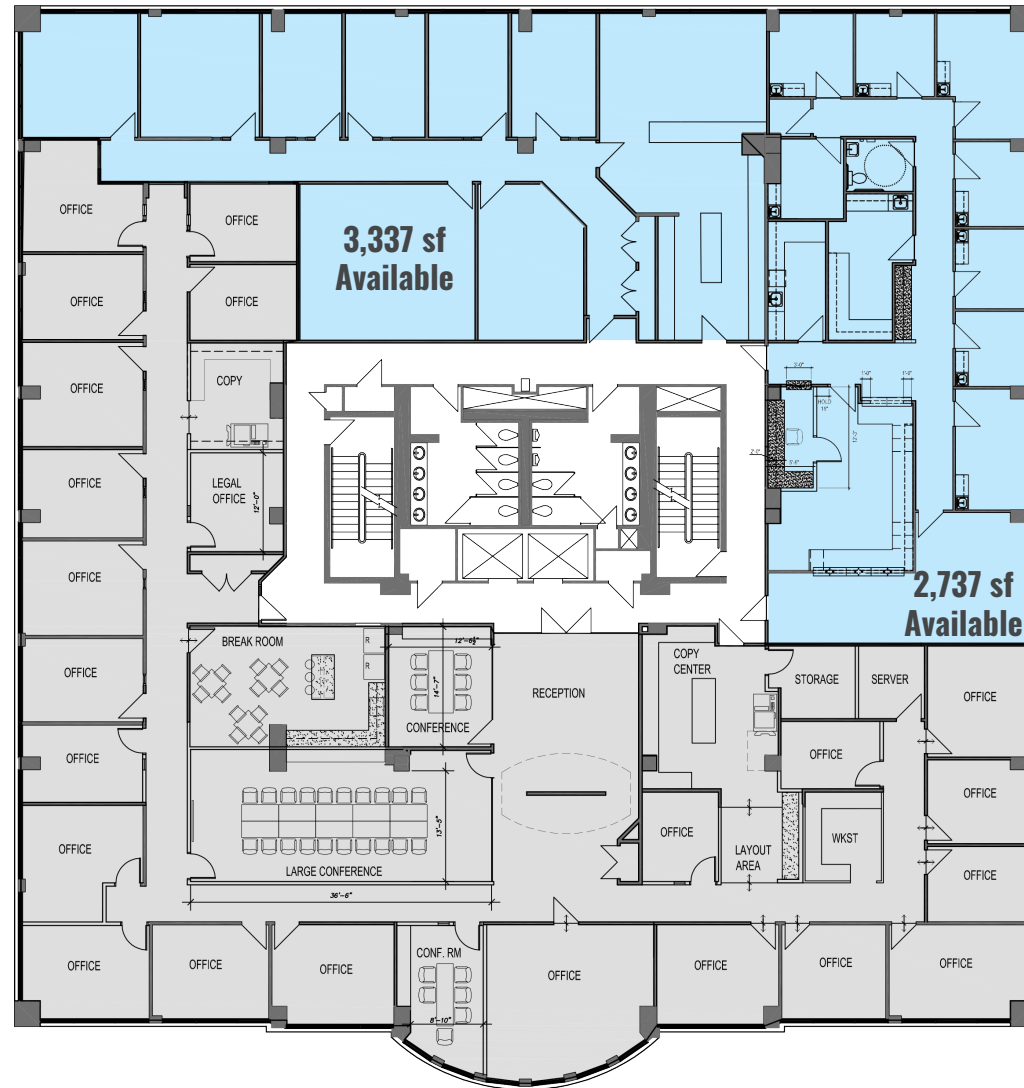
200 HARRY S. TRUMAN PARKWAY | ANNAPOLIS, MARYLAND 21401

COVID BUILDING PROTOCOLS

- ▶ Enhanced pre-opening cleaning protocols
- ▶ Enhanced cleaning & sanitation throughout the day
- ▶ Social distancing prompts throughout the property
- ▶ Directional signage throughout the property
- ▶ Self-serve sanitizer and wipe stations
- ▶ Increased training/PPE for property staff



Contiguous up to 6,074 sf



FOR LEASE

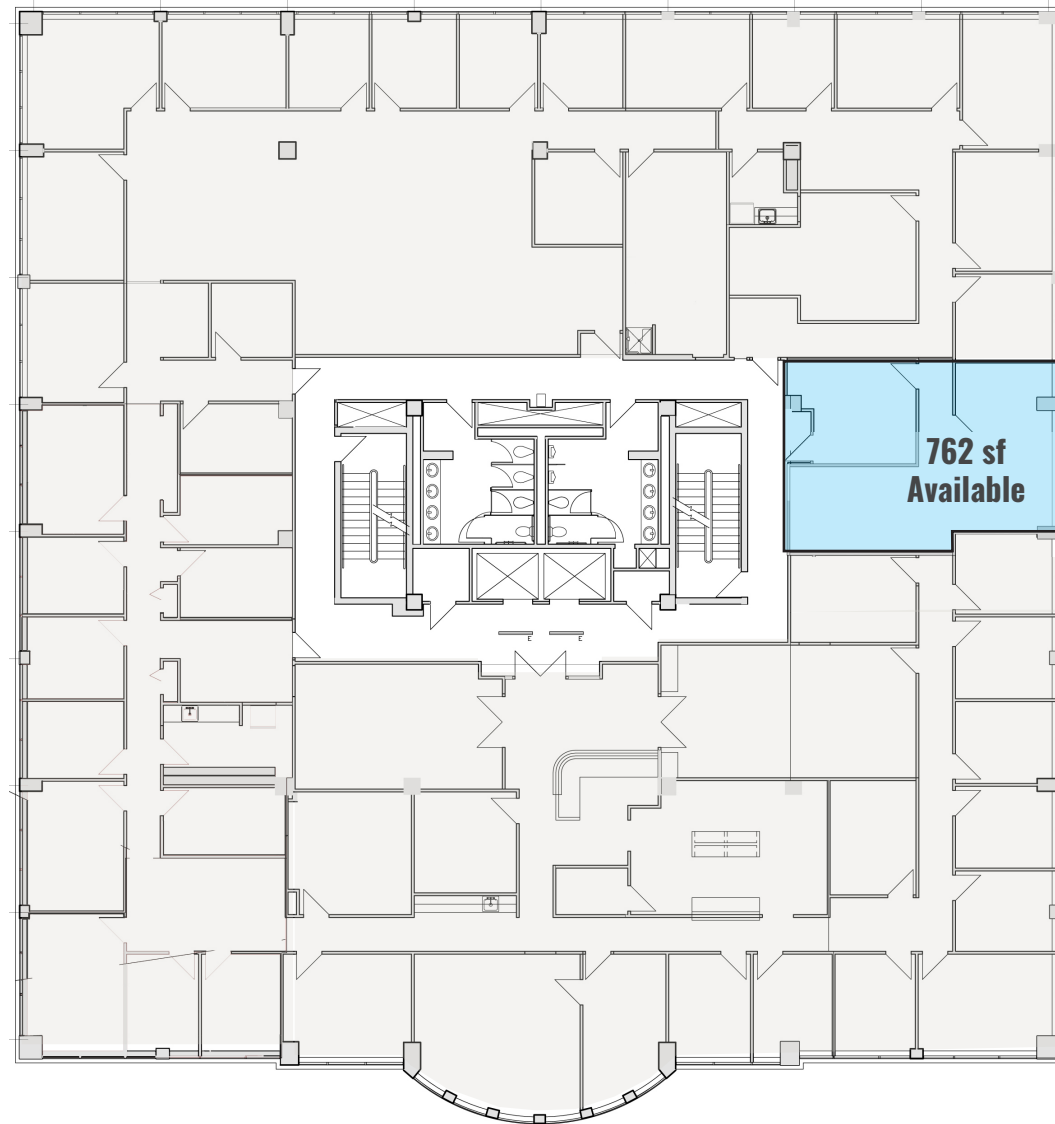
Anne Arundel County, MD

4TH FLOOR PLAN

200 HARRY S. TRUMAN PARKWAY | ANNAPOLIS, MARYLAND 21401

COVID BUILDING PROTOCOLS

- ▶ Enhanced pre-opening cleaning protocols
- ▶ Enhanced cleaning & sanitation throughout the day
- ▶ Social distancing prompts throughout the property
- ▶ Directional signage throughout the property
- ▶ Self-serve sanitizer and wipe stations
- ▶ Increased training/PPE for property staff



Trish Farrell

☎ 410.974.9003

✉ tfarrell@mackenziecommercial.com

Mackenzie Commercial Real Estate Services, LLC

E. Hayes Merkert, SIOR

☎ 443.798.9344

✉ hmerkert@mackenziecommercial.com

• 410-974-9336 • 410 Severn Avenue | Annapolis, Maryland 21403 • www.MACKENZIECOMMERCIAL.com

Bethany Hobbs

☎ 410.953.0359

✉ bhobbs@mackenziecommercial.com

FOR LEASE

Anne Arundel County, MD

200 HARRY S. TRUMAN PARKWAY

ANNAPOLIS | MARYLAND 21401

