

FOR LEASE

Anne Arundel County, MD



THE PARKWAY BUILDING

200 HARRY S. TRUMAN PARKWAY
ANNAPOLIS, MARYLAND 21401

 **MACKENZIE**
COMMERCIAL REAL ESTATE SERVICES, LLC

Trish Farrell

☎ 410.974.9003

✉ tfarrell@mackenziecommercial.com

Mackenzie Commercial Real Estate Services, LLC

E. Hayes Merkert, SIOR

☎ 443.798.9344

✉ hmerkert@mackenziecommercial.com

• 410-974-9336 • 410 Severn Avenue | Annapolis, Maryland 21403 • www.MACKENZIECOMMERCIAL.com

Bethany Hobbs

☎ 410.953.0359

✉ bhobbs@mackenziecommercial.com

FOR LEASE

Anne Arundel County, MD

THE PARKWAY BUILDING

200 HARRY S. TRUMAN PARKWAY | ANNAPOLIS, MARYLAND 21401

AVAILABLE

2,737-6,074 sf (2nd floor)

RENTAL RATE

Withheld

PARKING RATIO

4:1,000 sf

OCCUPANCY

Immediate

HIGHLIGHTS

- ▶ High visibility along Riva Road and Harry S. Truman Parkway
- ▶ Close proximity to Anne Arundel County office buildings and Board of Education
- ▶ Immediate access to Rt. 50, I-97 and Aris T. Allen Boulevard
- ▶ Large conference and meeting room facilities available for tenants use
- ▶ Free on-site deck and surface parking



Trish Farrell

☎ 410.974.9003

✉ tfarrell@mackenziecommercial.com

Mackenzie Commercial Real Estate Services, LLC

E. Hayes Merkert, SIOR

☎ 443.798.9344

✉ hmerkert@mackenziecommercial.com

410-974-9336 • 410 Severn Avenue | Annapolis, Maryland 21403 • www.MACKENZIECOMMERCIAL.com

Bethany Hobbs

☎ 410.953.0359

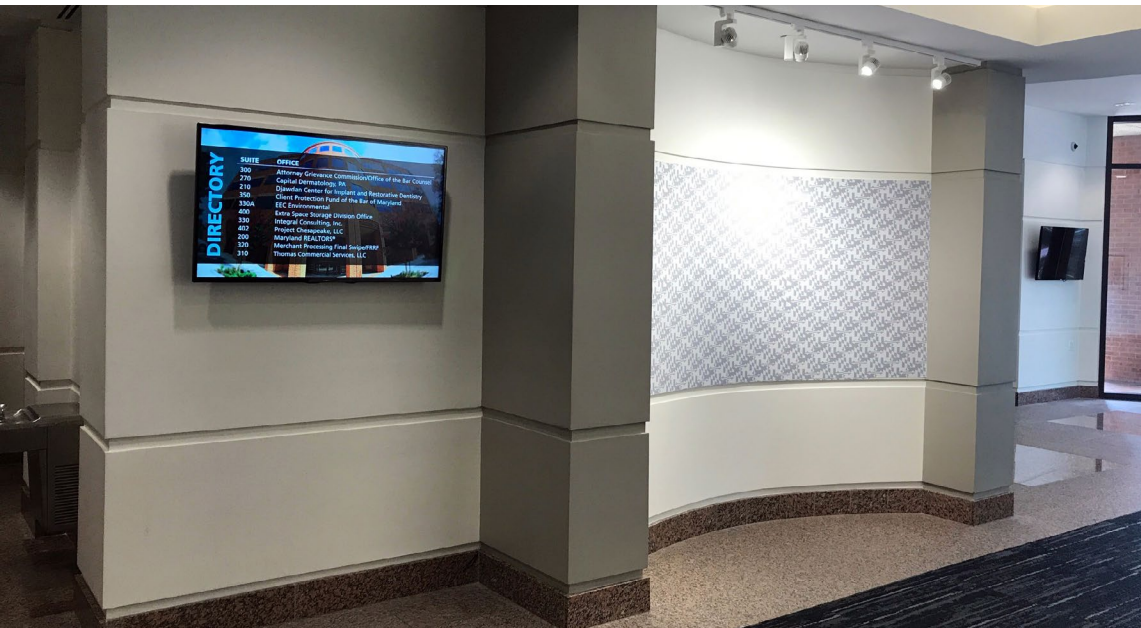
✉ bhobbs@mackenziecommercial.com

FOR LEASE

Anne Arundel County, MD

NEWLY RENOVATED LOBBY AND COMMON AREA

THE PARKWAY BUILDING | 200 HARRY S. TRUMAN PARKWAY | ANNAPOLIS, MARYLAND 21401



FOR LEASE

Anne Arundel County, MD

SHARED CONFERENCE ROOM FACILITIES

THE PARKWAY BUILDING | 200 HARRY S. TRUMAN PARKWAY | ANNAPOLIS, MARYLAND 21401



 **MACKENZIE**
COMMERCIAL REAL ESTATE SERVICES, LLC

Trish Farrell
☎ 410.974.9003
✉ tfarrell@mackenziecommercial.com
Mackenzie Commercial Real Estate Services, LLC

E. Hayes Merkert, SIOR
☎ 443.798.9344
✉ hmerkert@mackenziecommercial.com

Bethany Hobbs
☎ 410.953.0359
✉ bhobbs@mackenziecommercial.com
• 410-974-9336 • 410 Severn Avenue | Annapolis, Maryland 21403 • www.MACKENZIECOMMERCIAL.com

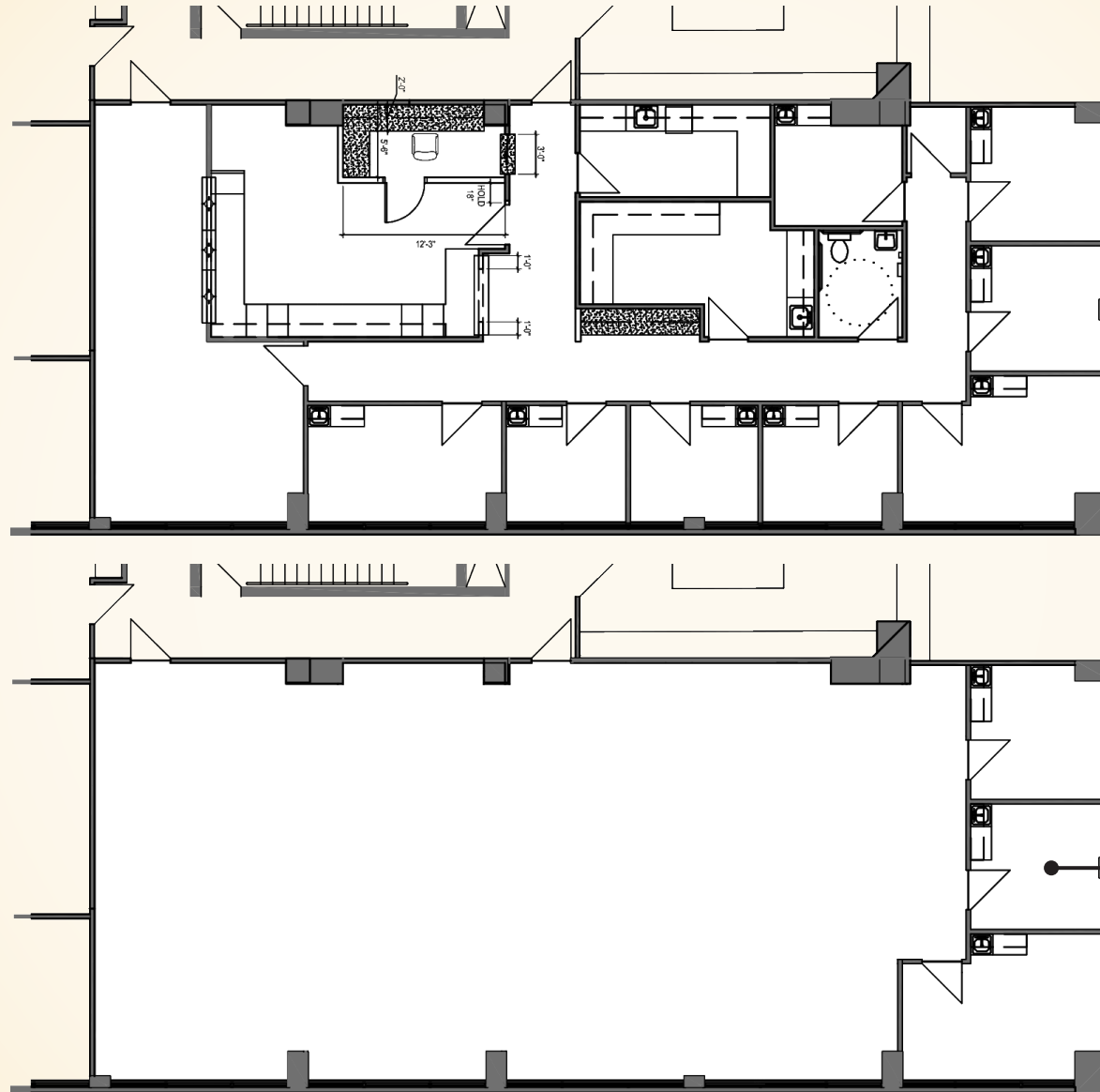
FOR LEASE

Anne Arundel County, MD

FLOOR PLANS: 2,737 SF

THE PARKWAY BUILDING | 200 HARRY S. TRUMAN PARKWAY | ANNAPOLIS, MARYLAND 21401

**2,737 SF
AVAILABLE**



AS IS

CONCEPT

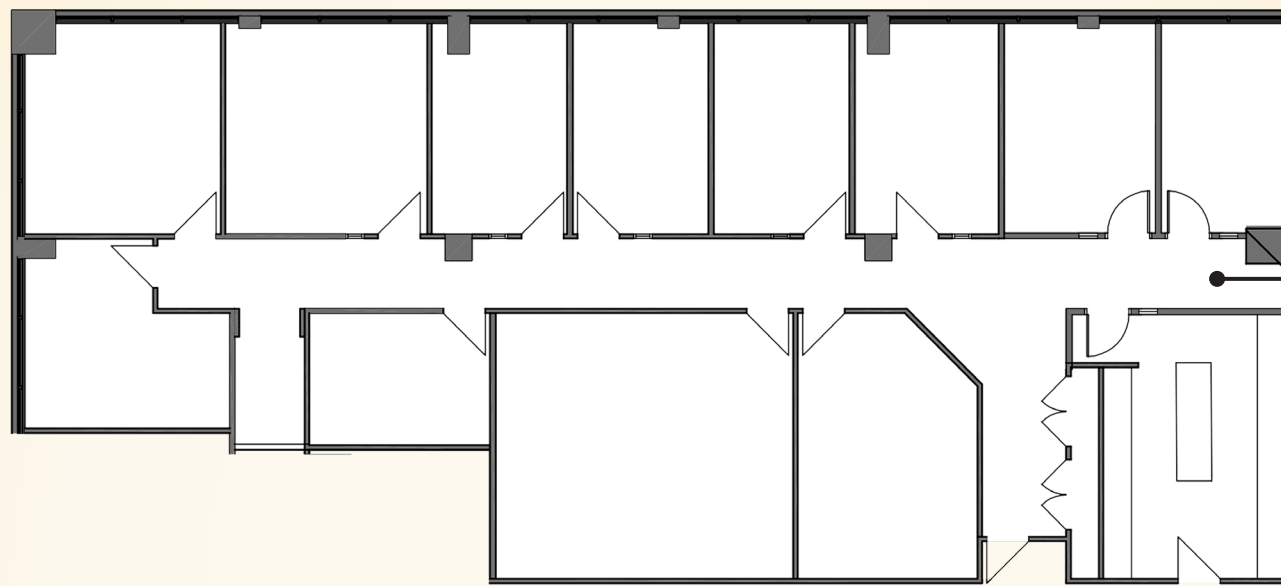
FOR LEASE

Anne Arundel County, MD

FLOOR PLANS: 3,337 SF

THE PARKWAY BUILDING | 200 HARRY S. TRUMAN PARKWAY | ANNAPOLIS, MARYLAND 21401

**3,337 SF
AVAILABLE**



AS IS



CONCEPT

FOR LEASE

Anne Arundel County, MD

LOCAL BIRDSEYE

THE PARKWAY BUILDING | 200 HARRY S. TRUMAN PARKWAY | ANNAPOLIS, MARYLAND 21401



FOR LEASE

Anne Arundel County, MD

MARKET AERIAL

THE PARKWAY BUILDING | 200 HARRY S. TRUMAN PARKWAY | ANNAPOLIS, MARYLAND 21401

