



# THE PARKWAY BUILDING

200 HARRY S. TRUMAN PARKWAY | ANNAPOLIS, MARYLAND 21401

FOR  
LEASE



**MACKENZIE**

COMMERCIAL REAL ESTATE SERVICES, LLC



# PROPERTY OVERVIEW

## HIGHLIGHTS:

- High visibility along Riva Road and Harry S. Truman Parkway
- Adjacent to Riva Road retail, restaurants, and amenities
- Immediate access to Rt. 50, I-97 and Aris T. Allen Boulevard
- Large conference and meeting room facilities available for tenants use
- Free on-site deck and surface parking

AVAILABLE:

2,737-6,074 SF (2ND FLOOR)

PARKING RATIO:

4:1,000 SF

OCCUPANCY:

IMMEDIATE

RENTAL RATE:

\$29.50 PSF, FULL SERVICE



GOOGLE STREET VIEW



# INTERIOR PHOTOS: NEWLY RENOVATED LOBBY AND COMMON AREA





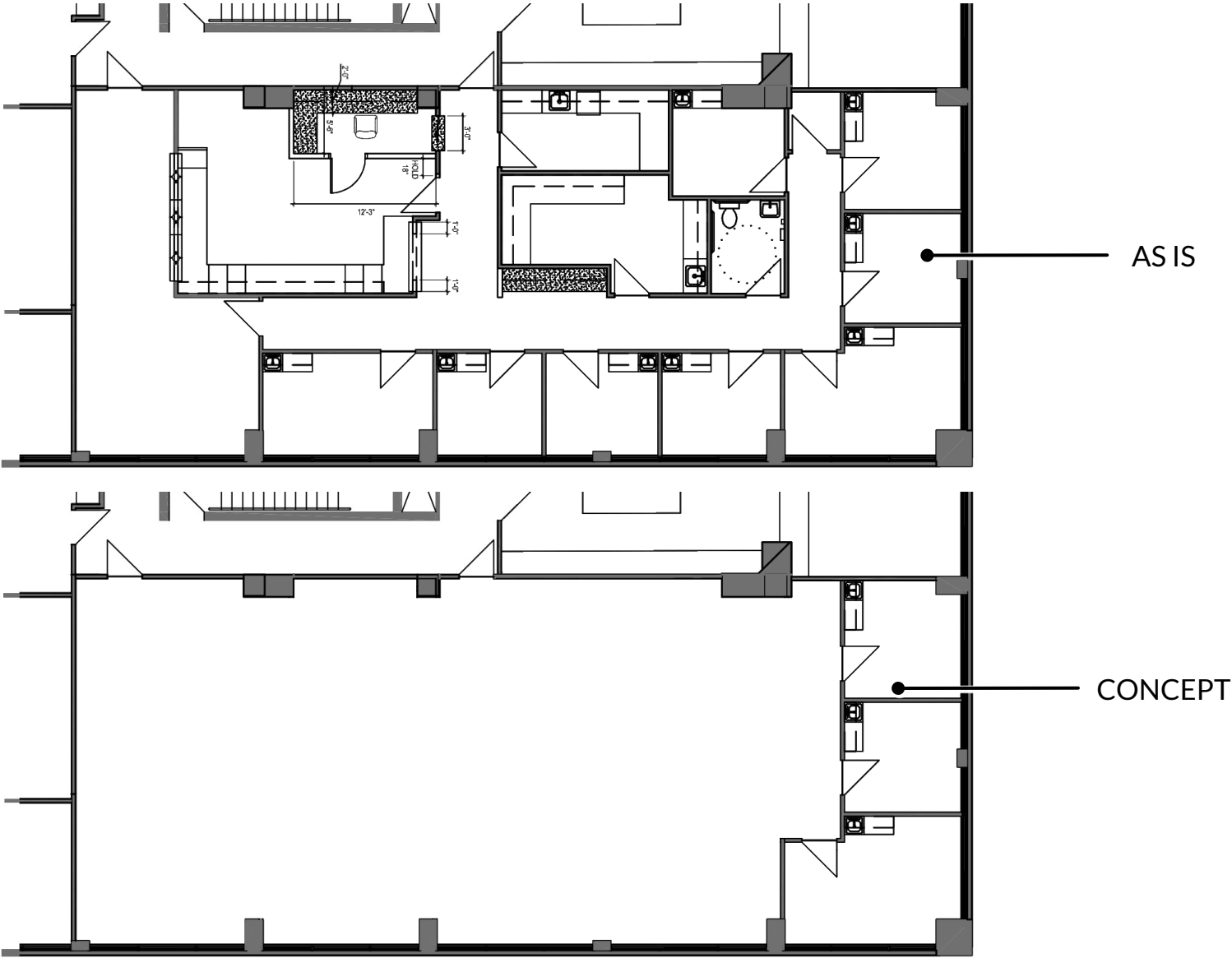
# INTERIOR PHOTOS: SHARED CONFERENCE ROOM FACILITIES





# FLOOR PLAN

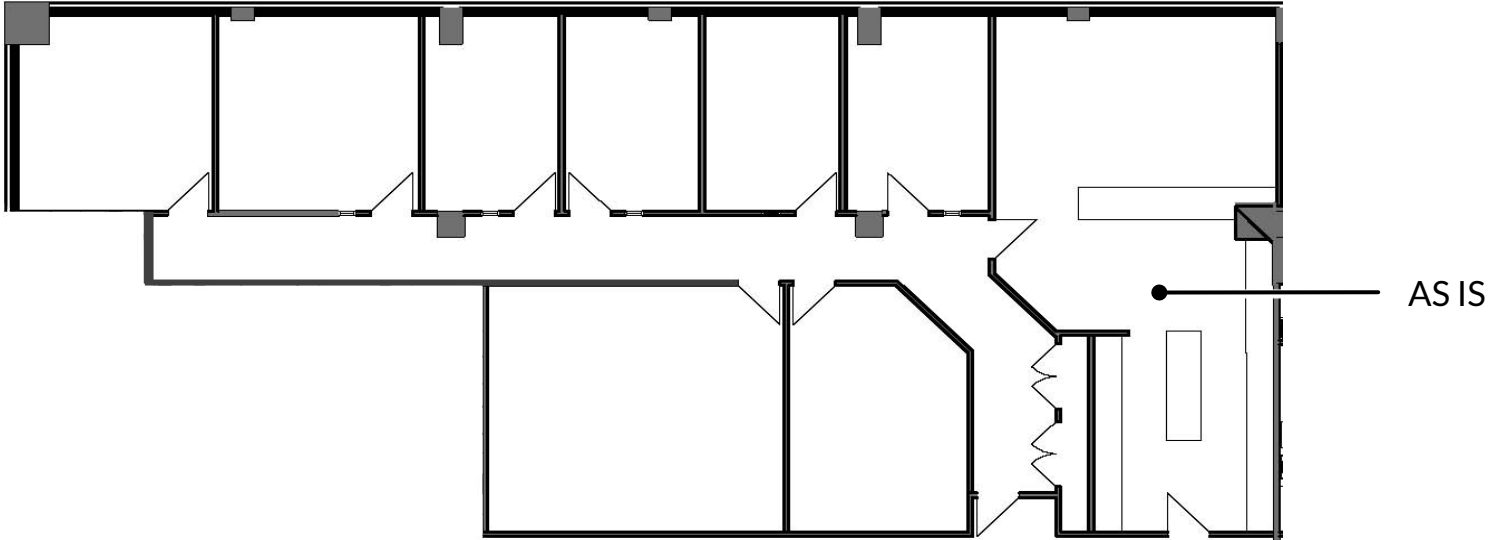
2,737 SF  
AVAILABLE





# FLOOR PLAN

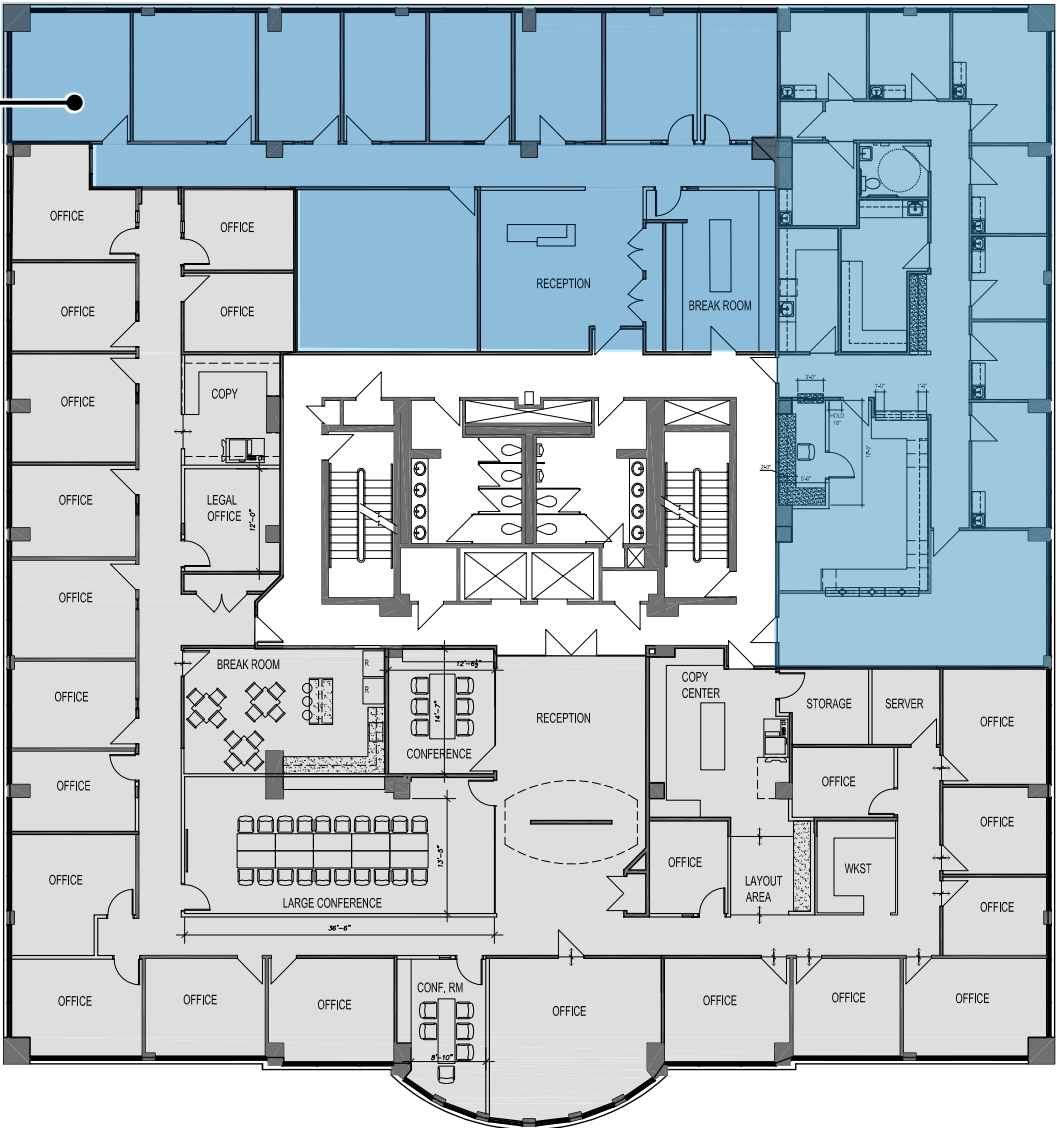
3,337 SF  
AVAILABLE





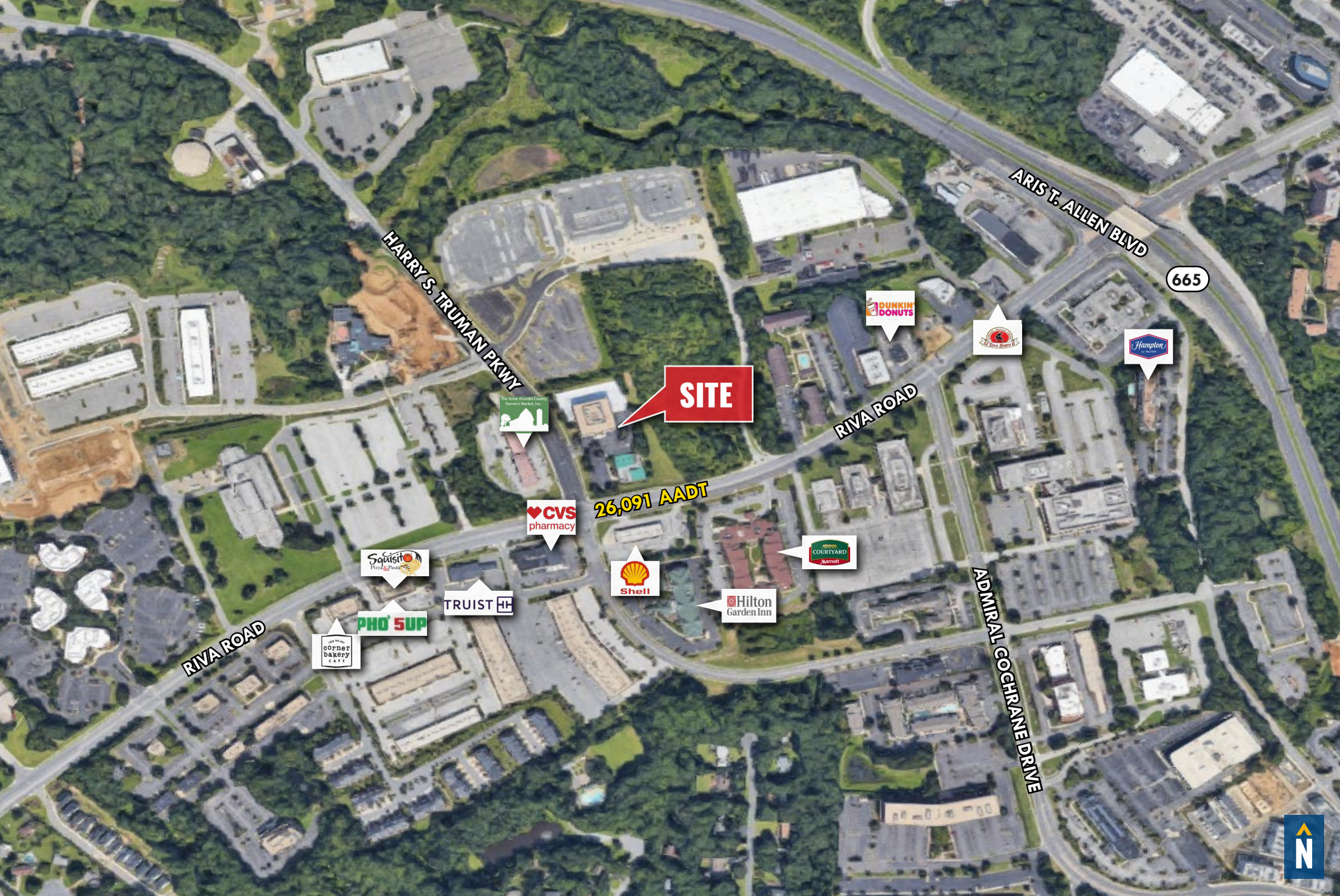
# FLOOR PLAN: 2ND FLOOR

6,074 SF  
CONTIGUOUS  
AVAILABLE





# LOCAL BIRDSEYE



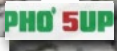
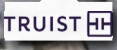
HARRY S. TRUMAN PKWY

ARIST T. ALLEN BLVD

665

**SITE**

26,091 AADT



RIVA ROAD

ADMIRAL COCHRANE DRIVE





# FOR MORE INFO **CONTACT:**



**TRISH FARRELL**  
*SENIOR VICE PRESIDENT & PRINCIPAL*  
**410.974.9003**  
TFARRELL@mackenziecommercial.com



**BETHANY HOBBS**  
*VICE PRESIDENT*  
**410.953.0359**  
BHOBBS@mackenziecommercial.com



**HAYES MERKERT**  
*SENIOR VICE PRESIDENT*  
**443.798.9344**  
HMERKERT@mackenziecommercial.com



VISIT **PROPERTY PAGE** FOR MORE INFORMATION.



**MACKENZIE**  
COMMERCIAL REAL ESTATE SERVICES, LLC

**410-974-9336**  
410 Severn Avenue  
Annapolis, MD 21403

OFFICES IN: **ANNAPOLIS** BALTIMORE BEL AIR COLUMBIA LUTHERVILLE

[www.MACKENZIECOMMERCIAL.com](http://www.MACKENZIECOMMERCIAL.com)

No warranty or representation, expressed or implied, is made as to the accuracy of the information contained herein, and same is submitted subject to errors, omissions, change of price, rental or other conditions, withdrawal without notice, and to any specific listing conditions imposed by our principals.