

# FOR LEASE

Anne Arundel County, MD

# THE PARKWAY BUILDING

200 HARRY S. TRUMAN PARKWAY | ANNAPOLIS, MARYLAND 21401

## AVAILABLE

2nd floor: 2,737 - 6,074 sf

4th floor: 762 sf

## RENTAL RATE

Withheld

## PARKING RATIO

4 per 1,000 sf

## OCCUPANCY

Immediate

## HIGHLIGHTS

- ▶ High visibility along Riva Road and Harry S. Truman Parkway
- ▶ Close proximity to Anne Arundel County office buildings and Board of Education
- ▶ Immediate access to Rt. 50, I-97 and Aris T. Allen Boulevard
- ▶ Large conference and meeting room facilities available for tenants use
- ▶ Free on-site deck and surface parking



**Trish Farrell** | Senior Vice President & Principal

☎ 410.974.9003 ✉ [tfarrell@mackenziecommercial.com](mailto:tfarrell@mackenziecommercial.com)

MacKenzie Commercial Real Estate Services, LLC • 410-974-9336 • 410 Severn Avenue | Annapolis, Maryland 21403 • [www.MACKENZIECOMMERCIAL.com](http://www.MACKENZIECOMMERCIAL.com)

**E. Hayes Merkert, SIOR** | Senior Vice President

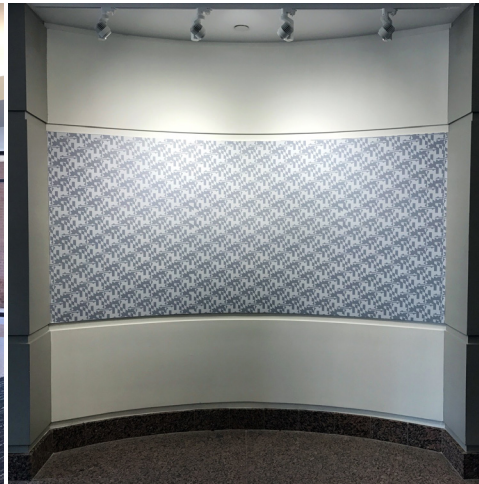
☎ 443.798.9344 ✉ [hmerkert@mackenziecommercial.com](mailto:hmerkert@mackenziecommercial.com)

# FOR LEASE

Anne Arundel County, MD

# NEWLY RENOVATED LOBBY AND COMMON AREA

200 HARRY S. TRUMAN PARKWAY | ANNAPOLIS, MARYLAND 21401



 **MACKENZIE**  
COMMERCIAL REAL ESTATE SERVICES, LLC

**Trish Farrell** | Senior Vice President & Principal  
☎ 410.974.9003 ✉ [tfarrell@mackenziecommercial.com](mailto:tfarrell@mackenziecommercial.com)

Mackenzie Commercial Real Estate Services, LLC • 410-974-9336 • 410 Severn Avenue | Annapolis, Maryland 21403 • [www.MACKENZIECOMMERCIAL.com](http://www.MACKENZIECOMMERCIAL.com)

**E. Hayes Merkert, SIOR** | Senior Vice President  
☎ 443.798.9344 ✉ [hmerkert@mackenziecommercial.com](mailto:hmerkert@mackenziecommercial.com)

# FOR LEASE

Anne Arundel County, MD

# SHARED CONFERENCE ROOM FACILITIES

200 HARRY S. TRUMAN PARKWAY | ANNAPOLIS, MARYLAND 21401



**Trish Farrell** | Senior Vice President & Principal  
☎ 410.974.9003 ✉ [tfarrell@mackenziecommercial.com](mailto:tfarrell@mackenziecommercial.com)  
MacKenzie Commercial Real Estate Services, LLC • 410-974-9336 • 410 Severn Avenue | Annapolis, Maryland 21403 • [www.MACKENZIECOMMERCIAL.com](http://www.MACKENZIECOMMERCIAL.com)

**E. Hayes Merkert, SIOR** | Senior Vice President  
☎ 443.798.9344 ✉ [hmerkert@mackenziecommercial.com](mailto:hmerkert@mackenziecommercial.com)  
MacKenzie Commercial Real Estate Services, LLC • 410-974-9336 • 410 Severn Avenue | Annapolis, Maryland 21403 • [www.MACKENZIECOMMERCIAL.com](http://www.MACKENZIECOMMERCIAL.com)

# FOR LEASE

Anne Arundel County, MD

# 2ND FLOOR PLAN

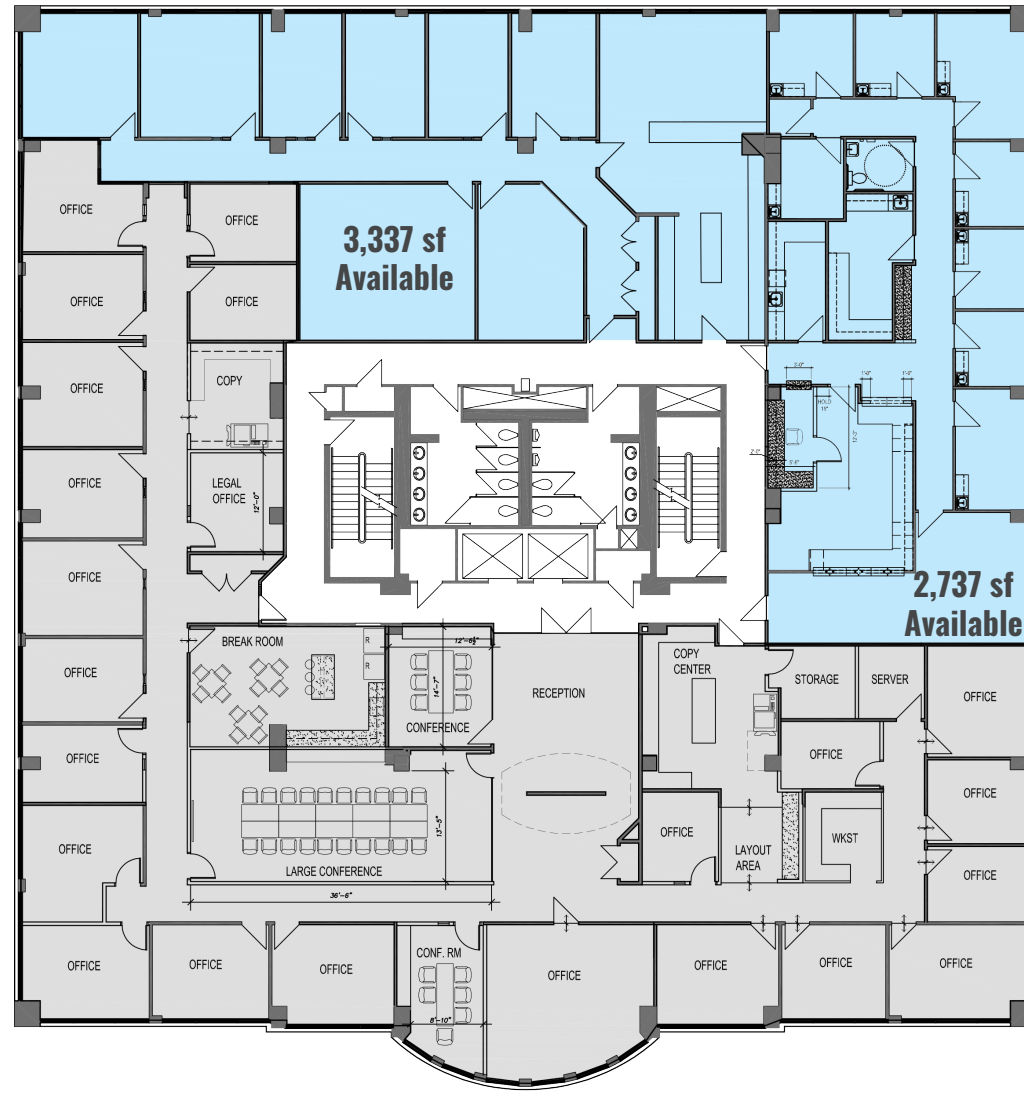
200 HARRY S. TRUMAN PARKWAY | ANNAPOLIS, MARYLAND 21401

## COVID BUILDING PROTOCOLS

- ▶ Enhanced pre-opening cleaning protocols
- ▶ Enhanced cleaning & sanitation throughout the day
- ▶ Social distancing prompts throughout the property
- ▶ Directional signage throughout the property
- ▶ Self-serve sanitizer and wipe stations
- ▶ Increased training/PPE for property staff



Contiguous up to 6,074 sf



# FOR LEASE

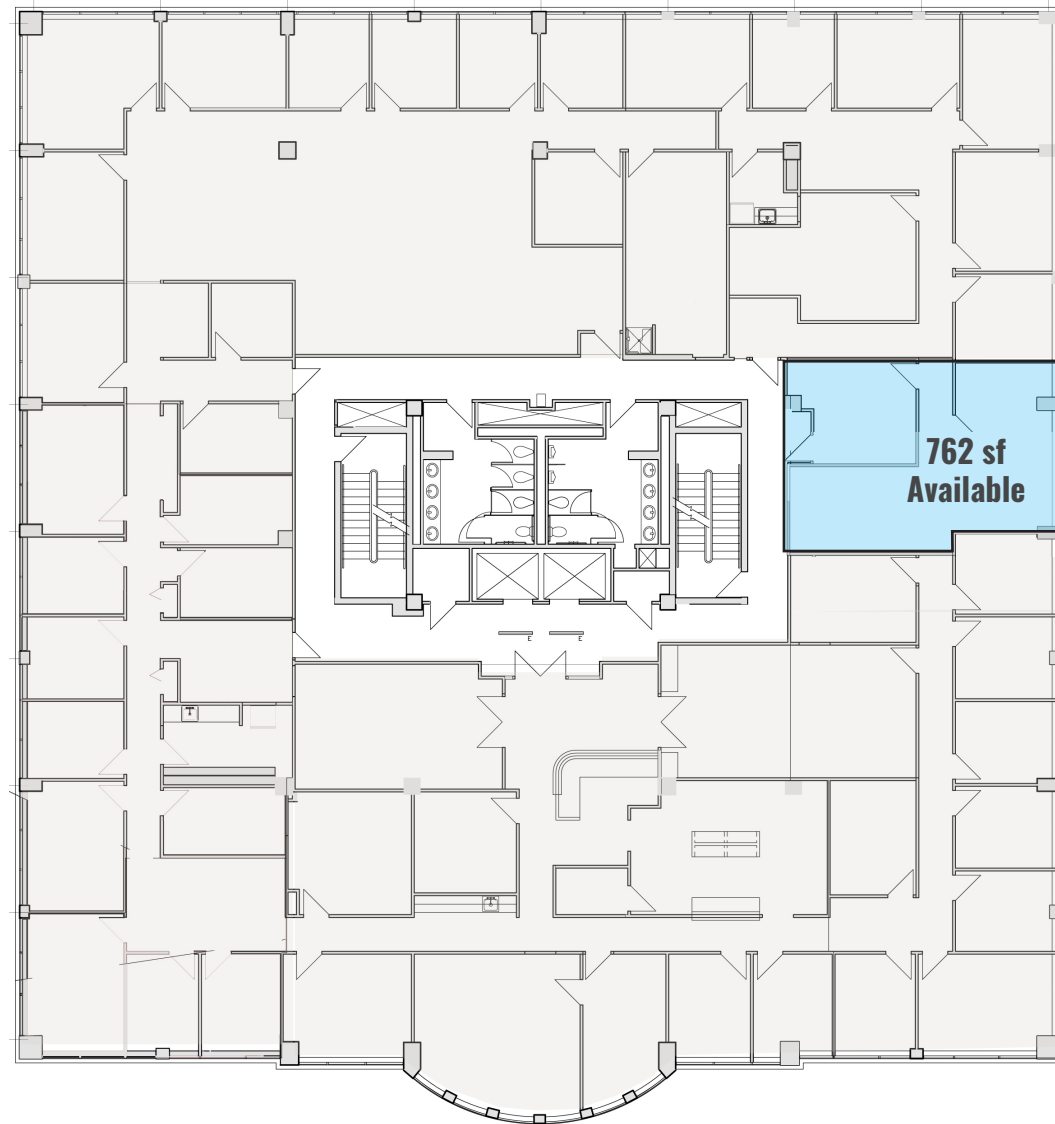
Anne Arundel County, MD

# 4TH FLOOR PLAN

200 HARRY S. TRUMAN PARKWAY | ANNAPOLIS, MARYLAND 21401

## COVID BUILDING PROTOCOLS

- ▶ Enhanced pre-opening cleaning protocols
- ▶ Enhanced cleaning & sanitation throughout the day
- ▶ Social distancing prompts throughout the property
- ▶ Directional signage throughout the property
- ▶ Self-serve sanitizer and wipe stations
- ▶ Increased training/PPE for property staff



# FOR LEASE

Anne Arundel County, MD

# 200 HARRY S. TRUMAN PARKWAY

ANNAPOLIS | MARYLAND 21401

