



2015 EMMORTON ROAD

BEL AIR, MARYLAND 21015

FOR
LEASE



MACKENZIE

COMMERCIAL REAL ESTATE SERVICES, LLC

PROPERTY OVERVIEW

HIGHLIGHTS:

- Class A office space available in prime Bel Air location
- Signage available on building pylon sign along Route 924
- Close proximity to Upper Chesapeake Medical Center
- Upscale finishes including marble in lobby and coffered ceilings
- Easy access to I-95, Route 40, and Route 1
- New parking lot and professional landscaping
- Suite 101:
 - Ceiling Height: 10'3"
 - Direct access from main lobby and a private exterior entrance
 - Supplemental HVAC units in the space

AVAILABLE:

SUITE 101: 2,619 SF
SUITE 203: 1,420 SF

PARKING:

4: 1,000 SF

RENTAL RATE:

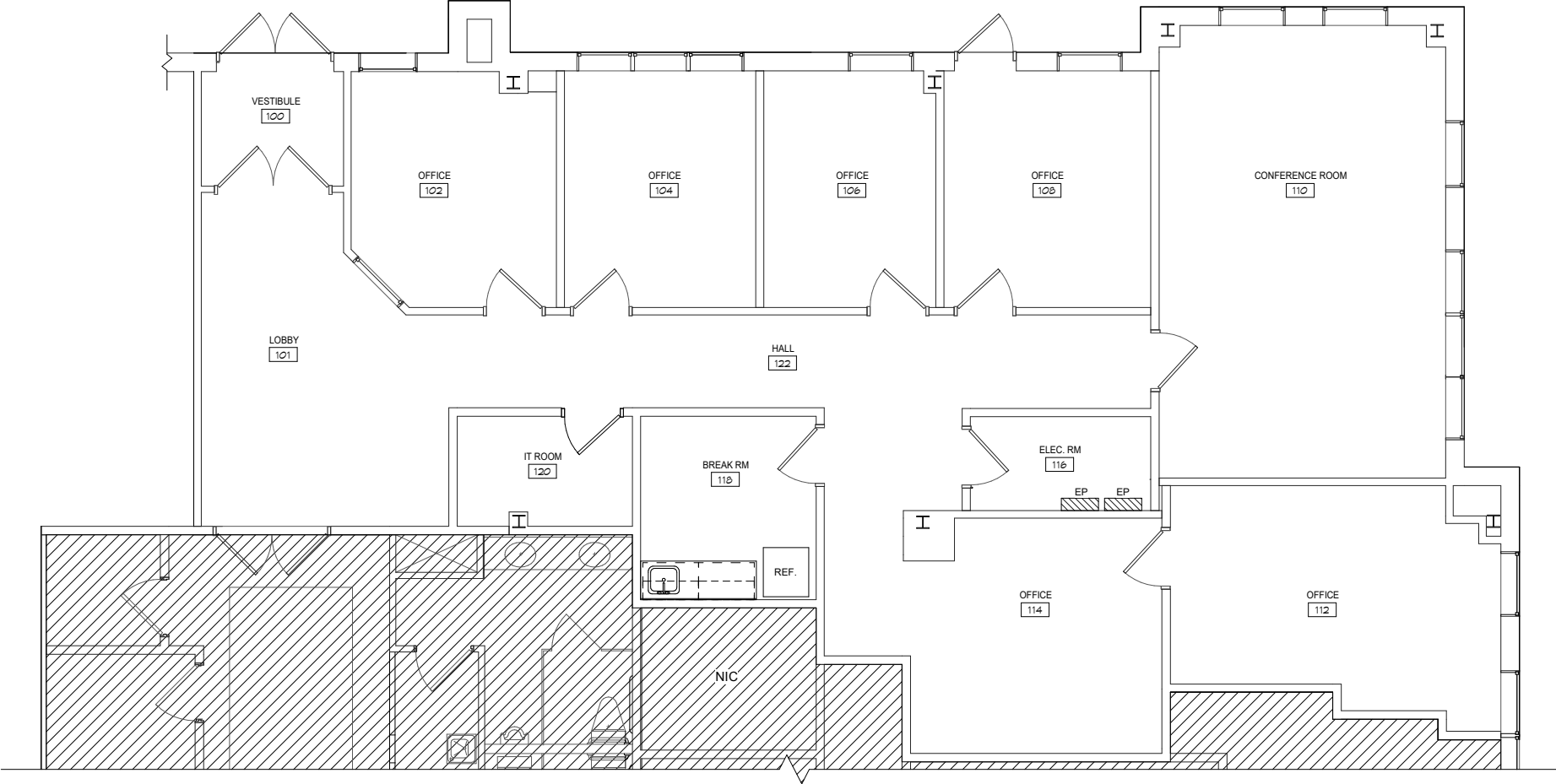
SUITE 101: \$22.00/SF
\$19.50/SF, NNN



GOOGLE STREET VIEW

FLOOR PLAN: SUITE 101

2,619 SF



LOCAL BIRDSEYE



FOR MORE INFO **CONTACT:**



TOM MOTTLEY

SENIOR VICE PRESIDENT & PRINCIPAL

443.573.3217

TMOTTLEY@mackenziecommercial.com



BEETLE SMITH

SENIOR VICE PRESIDENT

443.573.3219

BSMITH@mackenziecommercial.com



MACKENZIE

COMMERCIAL REAL ESTATE SERVICES, LLC

410-879-1900

**3465 Box Hill Corporate Center Drive, Suite F
Abingdon, MD 21009**

OFFICES IN: ANNAPOLIS, MD BALTIMORE, MD **BEL AIR, MD** COLUMBIA, MD LUTHERVILLE, MD CHARLOTTESVILLE, VA

www.MACKENZIECOMMERCIAL.com



VISIT **PROPERTY PAGE** FOR MORE INFORMATION.

No warranty or representation, expressed or implied, is made as to the accuracy of the information contained herein, and same is submitted subject to errors, omissions, change of price, rental or other conditions, withdrawal without notice, and to any specific listing conditions imposed by our principals.