

# SUBLEASE

Howard County, Maryland

# NORTH RIDGE PROFESSIONAL BUILDING

2850 NORTH RIDGE ROAD | ELLICOTT CITY, MARYLAND 21043

## AVAILABLE

Suite 203: 1,364 sf

## TERM

Thru 10/31/2024

## USE

Medical office

## RENTAL RATE

\$29.25/sf, MG

## HIGHLIGHTS

- ▶ Former pediatric office
- ▶ Private office, storage room, reception/waiting area, and 3 furnished exam rooms
- ▶ Great location with easy access to Route 29, Route 40, and I-70
- ▶ Move-in ready



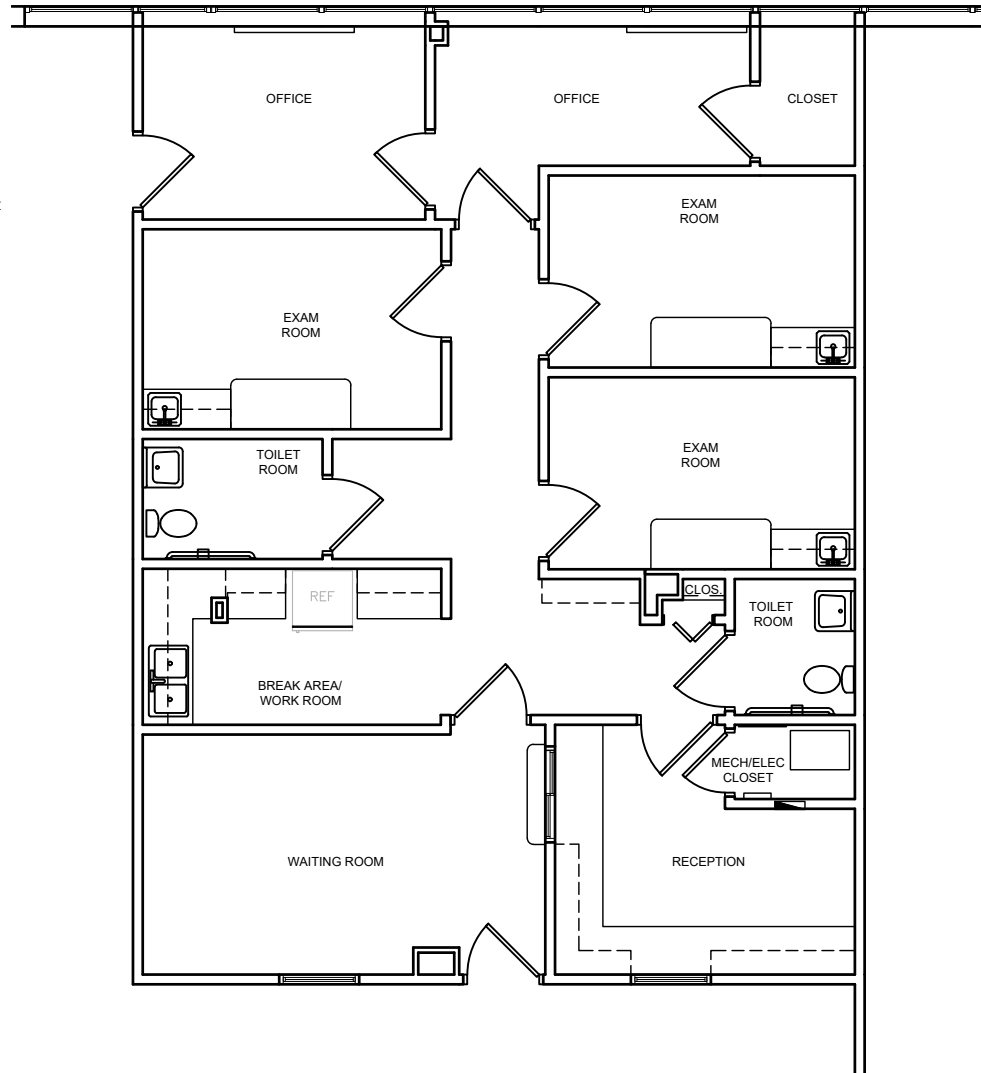
# SUBLEASE

Howard County, Maryland

# FLOORPLAN

NORTH RIDGE PROFESSIONAL BUILDING | 2850 NORTH RIDGE ROAD | ELLICOTT CITY, MARYLAND 21043

Suite 203: 1,364 sf





# SUBLEASE

Howard County, Maryland

# BIRDSEYE

NORTH RIDGE PROFESSIONAL BUILDING | 2850 NORTH RIDGE ROAD | ELLICOTT CITY, MARYLAND 21043

