



4940 CAMPBELL BOULEVARD

WHITE MARSH, MARYLAND 21236

FOR
LEASE



MACKENZIE

COMMERCIAL REAL ESTATE SERVICES, LLC

PROPERTY OVERVIEW

HIGHLIGHTS:

- Located in the amenity rich White Marsh Town Center
- High image building located at the entrance to the White Marsh Business Center park
- Convenient to I-95 and I-695 for easy access to Towson, Baltimore City, and Harford County
- Flexible floor plans allow for a wide variety of uses

AVAILABLE:

*SUITE 100: 2,074 SF
*SUITE 110: 3,131 SF
*CAN COMBINE TO 5,205 SF
SUITE 125: 2,877 SF
SUITE 160: 3,397 SF

PARKING:

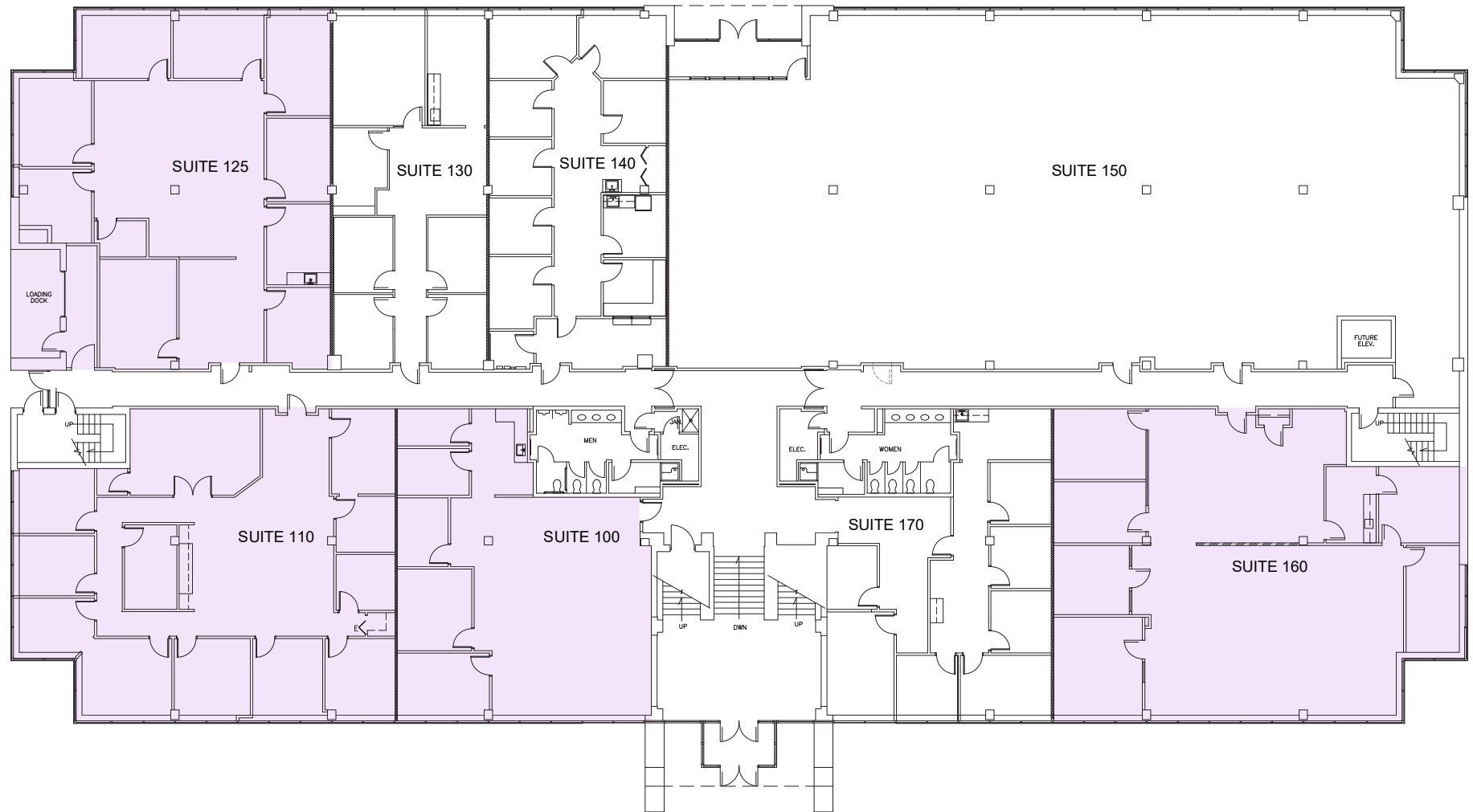
220 SURFACE SPACES

RENTAL RATE:

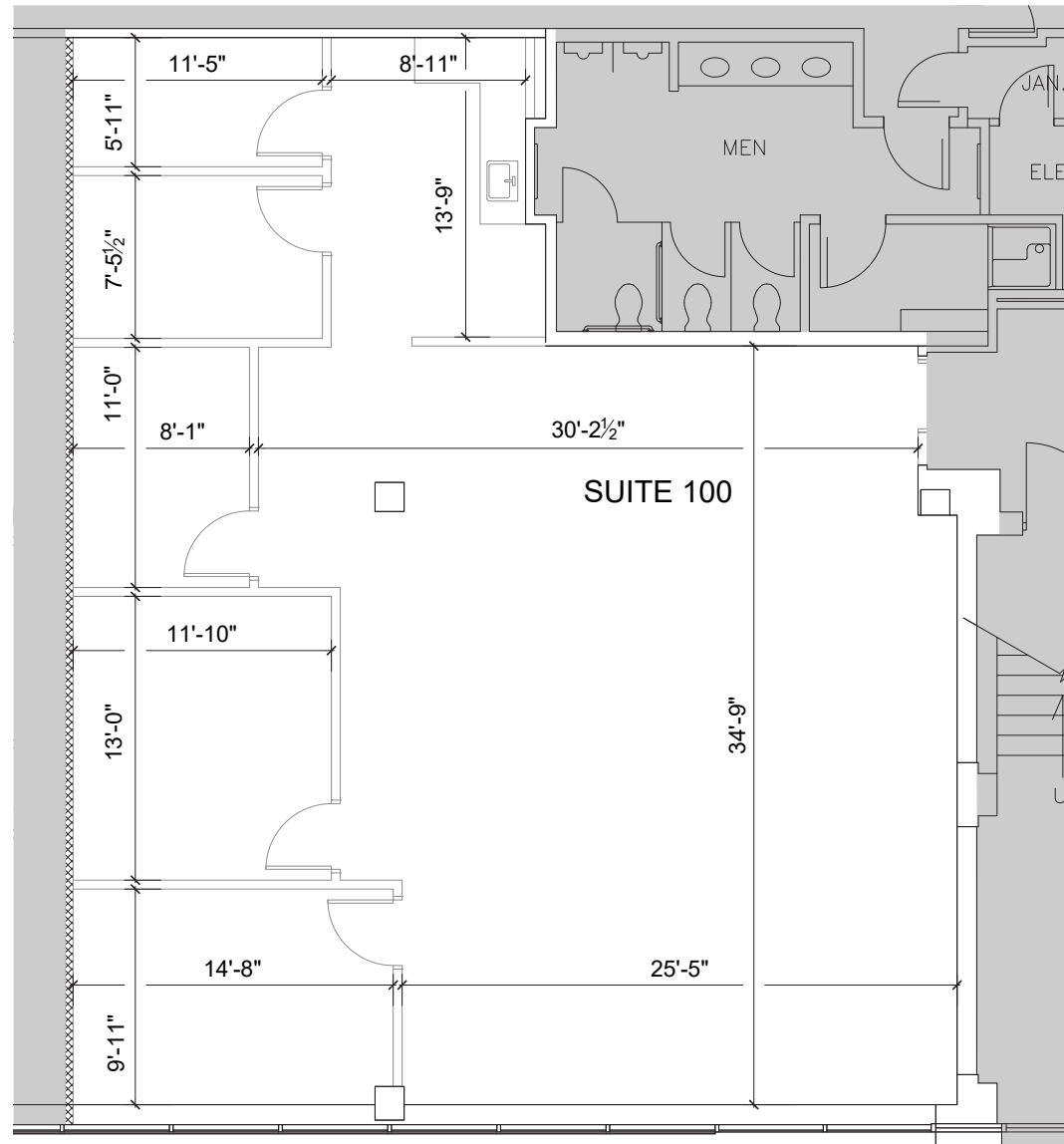
\$24.50/SF, FS



FLOOR PLAN: **FIRST FLOOR**

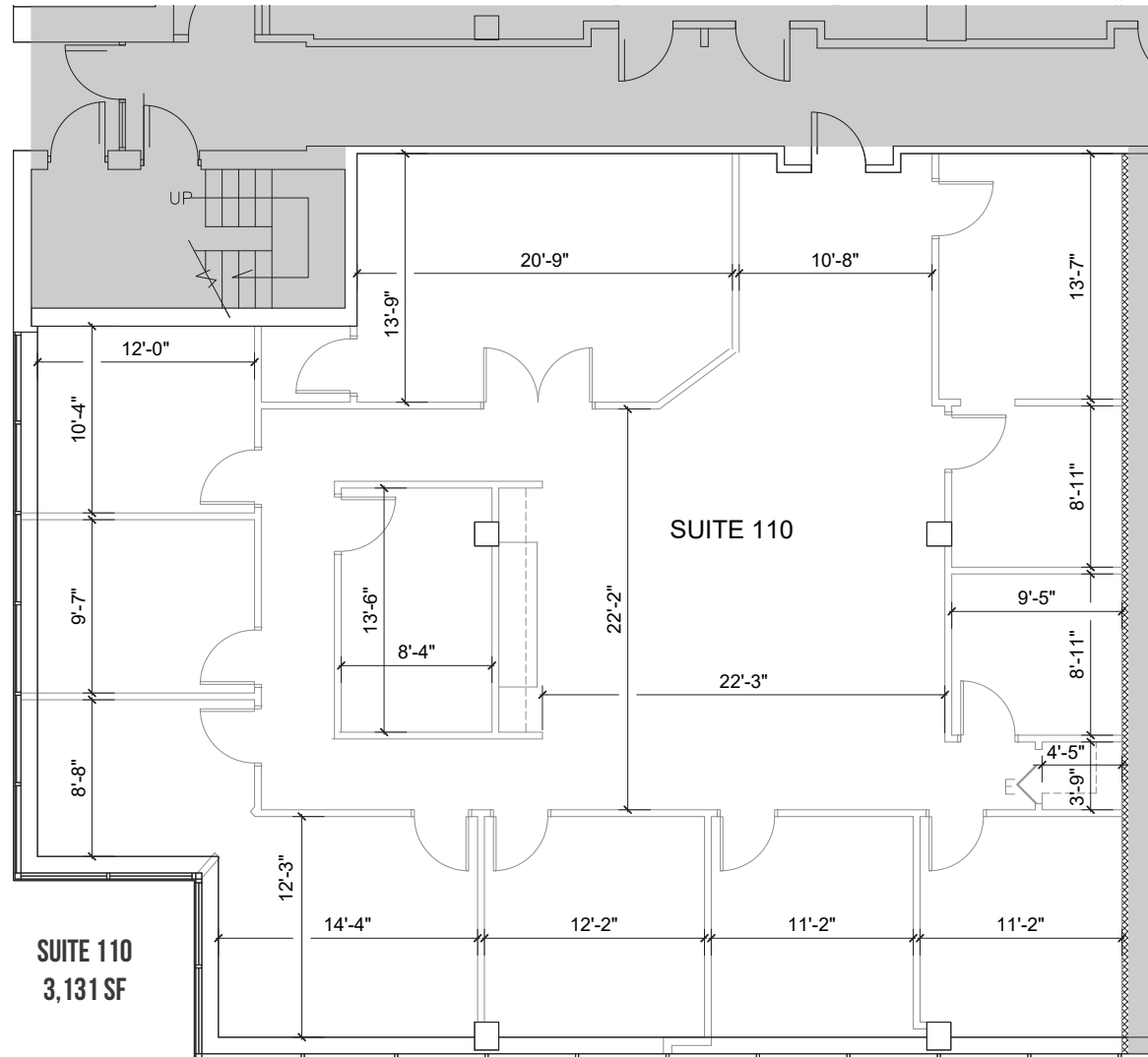


FLOOR PLAN: **FIRST FLOOR - SUITE 100**

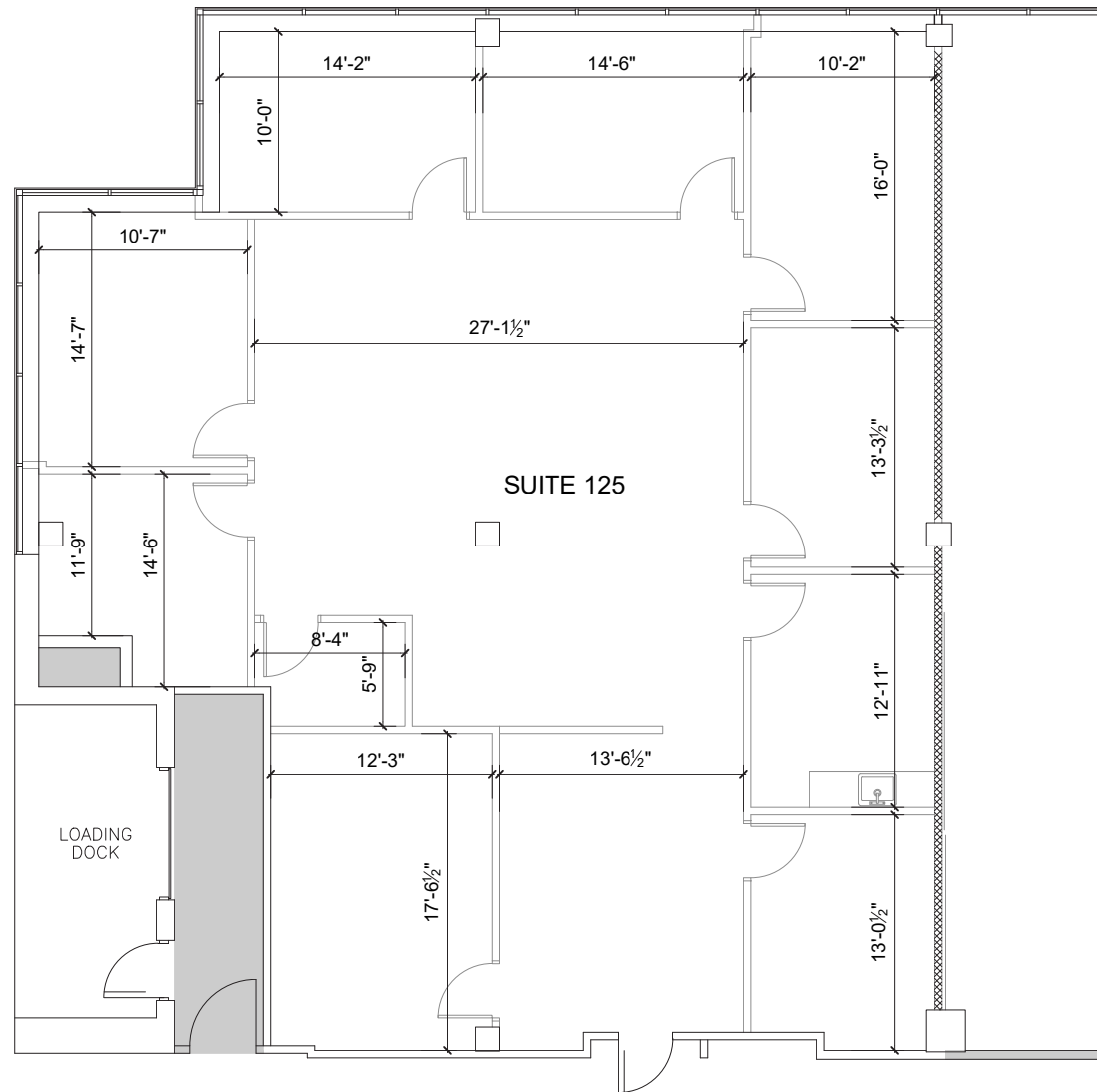


SUITE 100
2,074 SF

FLOOR PLAN: **FIRST FLOOR - SUITE 110**

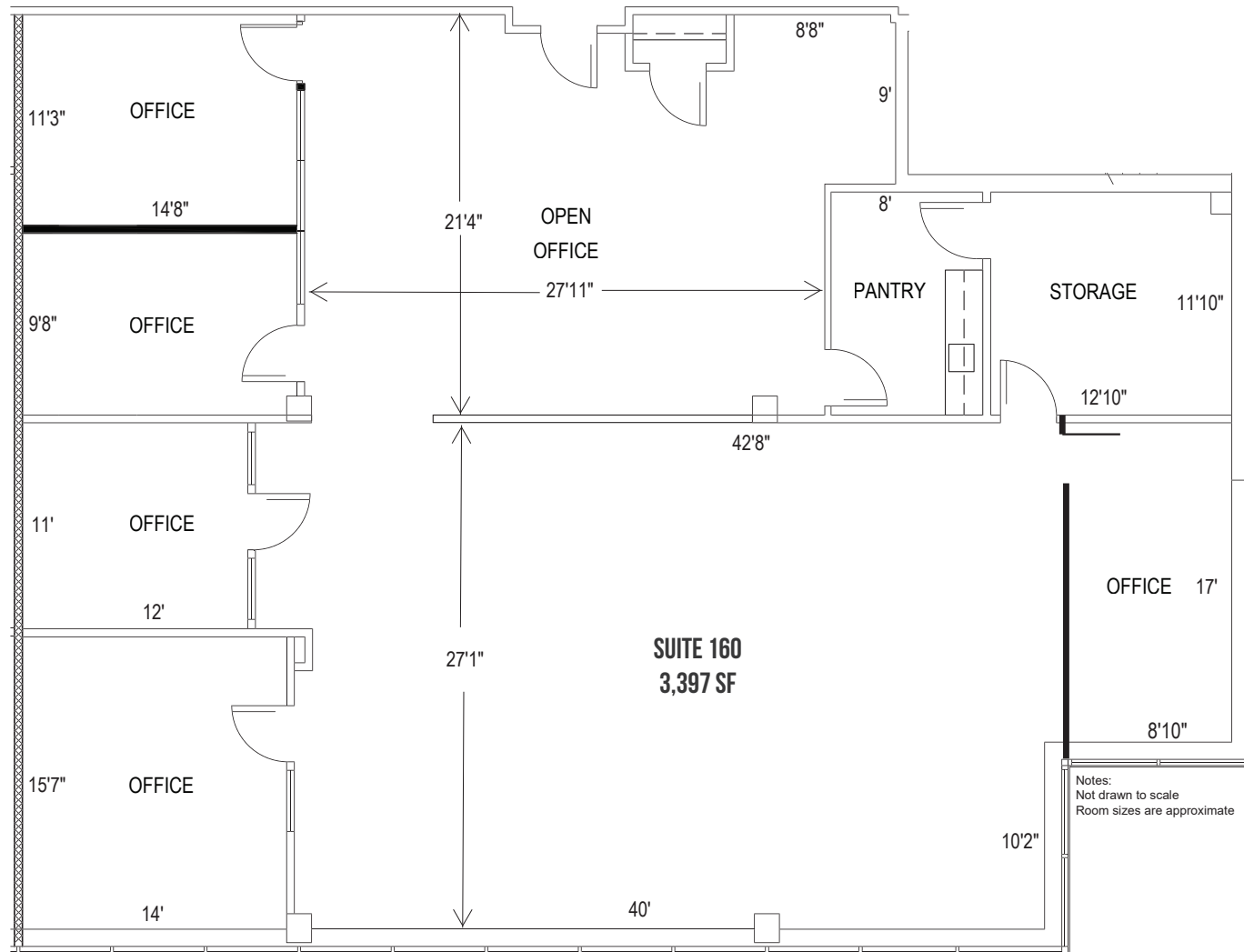


FLOOR PLAN: **FIRST FLOOR - SUITE 125**



SUITE 125
2,877 SF

FLOOR PLAN: **FIRST FLOOR - SUITE 160**



LOCAL BIRDSEYE



43

SITE

White Marsh Mall



THE AVENUE at White Marsh



INTERSTATE 95

HONEYGO BLVD

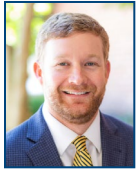
TOWN CENTER DR



Avenue Grand
SMART. STYLISH. EXCLUSIVELY GRAND.

SANDPIPER CIR

FOR MORE INFO CONTACT:



HENSON FORD

VICE PRESIDENT

410.494.6657

HFORD@mackenziecommercial.com



JOE BRADLEY

SENIOR VICE PRESIDENT & PRINCIPAL

410.494.4892

JBRADLEY@mackenziecommercial.com



MATT MUELLER

SENIOR VICE PRESIDENT & PRINCIPAL

410.494.6658

MMUELLER@mackenziecommercial.com



DYLAN BOZEL

REAL ESTATE ADVISOR

410.494.4896

DBOZEL@mackenziecommercial.com



VISIT **PROPERTY PAGE** FOR MORE INFORMATION.



MACKENZIE

COMMERCIAL REAL ESTATE SERVICES, LLC

410-821-8585

**2328 W. Joppa Road, Suite 200
Lutherville, MD 21093**

OFFICES IN: ANNAPOLIS, MD BALTIMORE, MD BEL AIR, MD COLUMBIA, MD **LUTHERVILLE, MD** CHARLOTTESVILLE, VA

www.MACKENZIECOMMERCIAL.com

No warranty or representation, expressed or implied, is made as to the accuracy of the information contained herein, and same is submitted subject to errors, omissions, change of price, rental or other conditions, withdrawal without notice, and to any specific listing conditions imposed by our principals.