



# LAKEFRONT 17 BUILDING

5570 STERRETT PLACE | COLUMBIA, MARYLAND 21044

FOR  
LEASE



**MACKENZIE**

COMMERCIAL REAL ESTATE SERVICES, LLC



# PROPERTY OVERVIEW

## HIGHLIGHTS:

- Several suites have woodland views
- Newly renovated lobby, hallways, and bathrooms
- Prime location near Columbia Lakefront and across from The Mall In Columbia
- Easy access to Route 29 and Route 175
- Plenty of parking

### AVAILABLE:

SUITE 103: 224 RSF  
SUITE 104: 2,354 RSF\*  
SUITE 210: 2,047 RSF  
SUITE 300: 885 - 2,772 RSF  
SUITE 310: 419 RSF  
\*DIRECT ENTRY WITH EXTERIOR  
BUILDING SIGNAGE

### BUILDING SIZE:

32,358 SF

### PARKING:

4/1,000 SF

### RENTAL RATE:

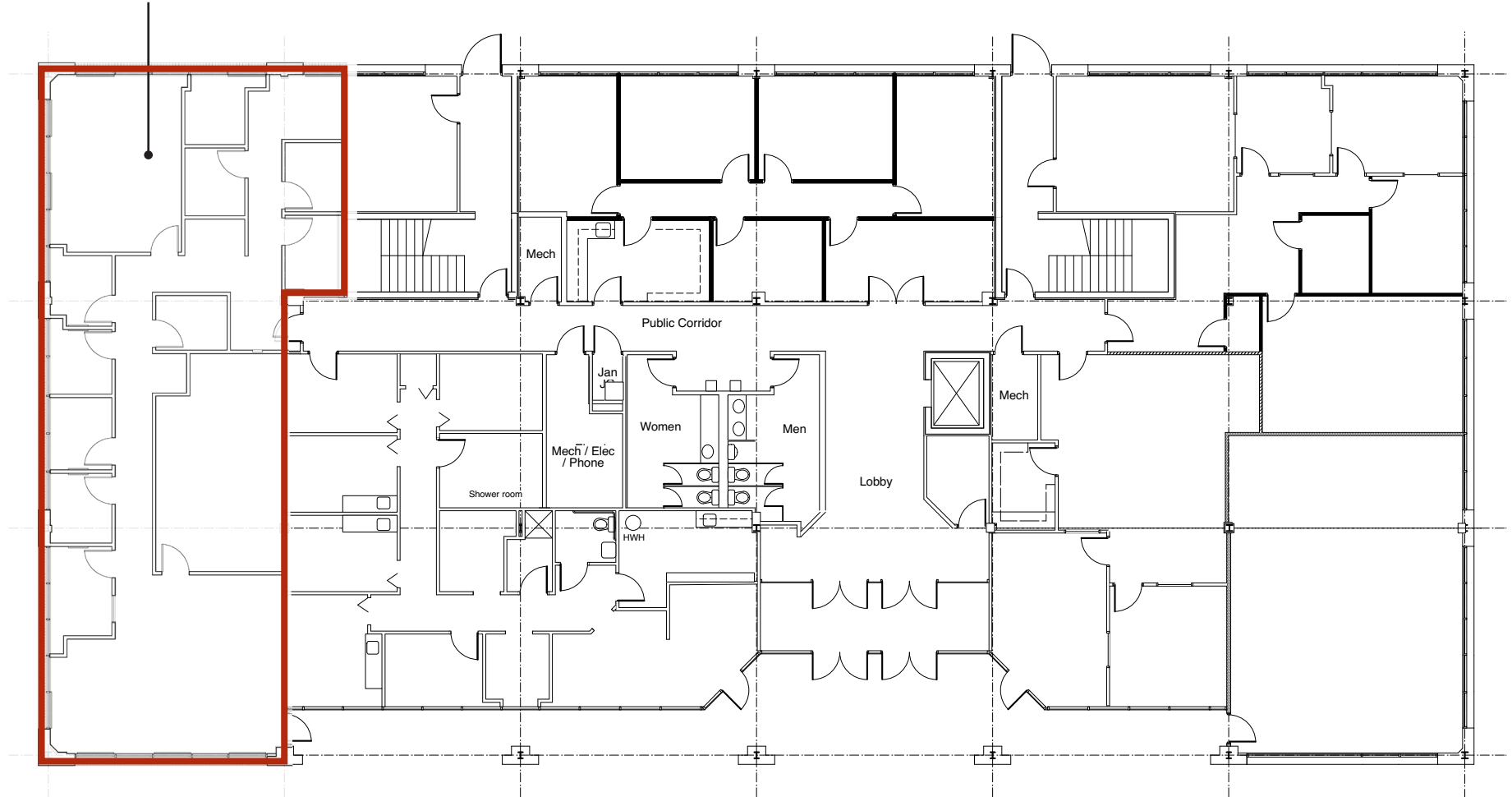
WITHHELD



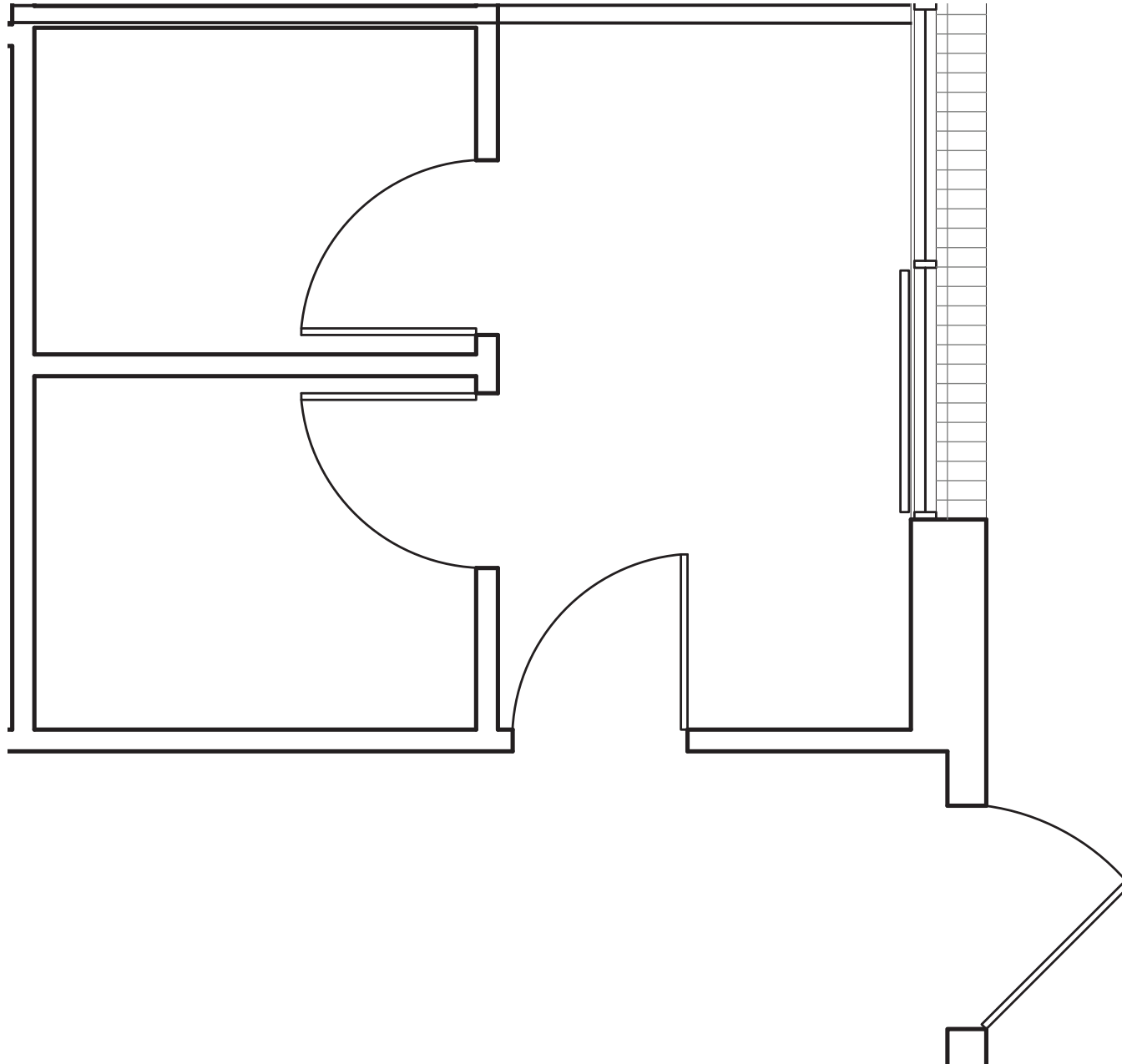


# FLOOR PLAN: 1ST FLOOR

SUITE 104  
2,354 SF

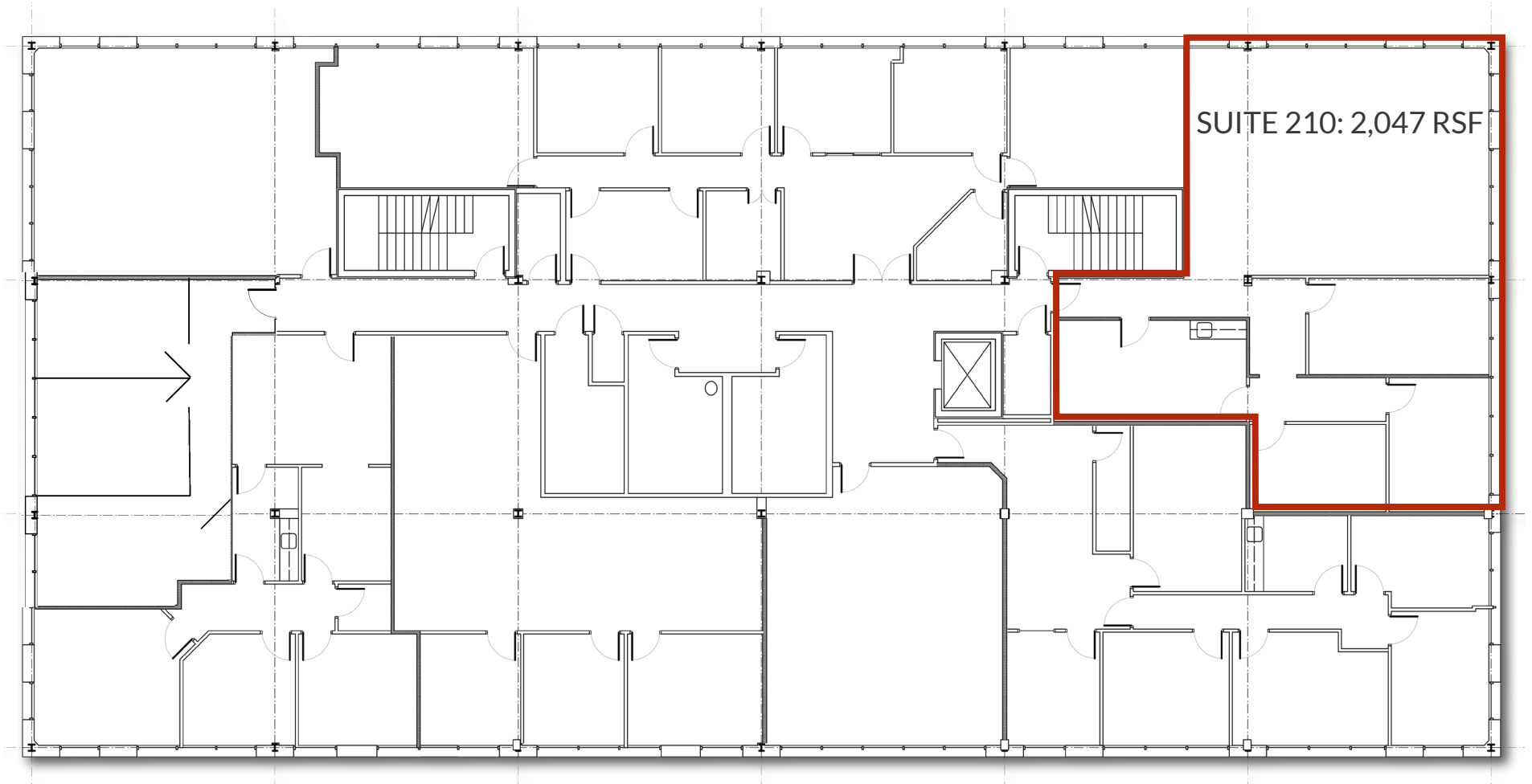


# FLOOR PLAN: **SUITE 103**



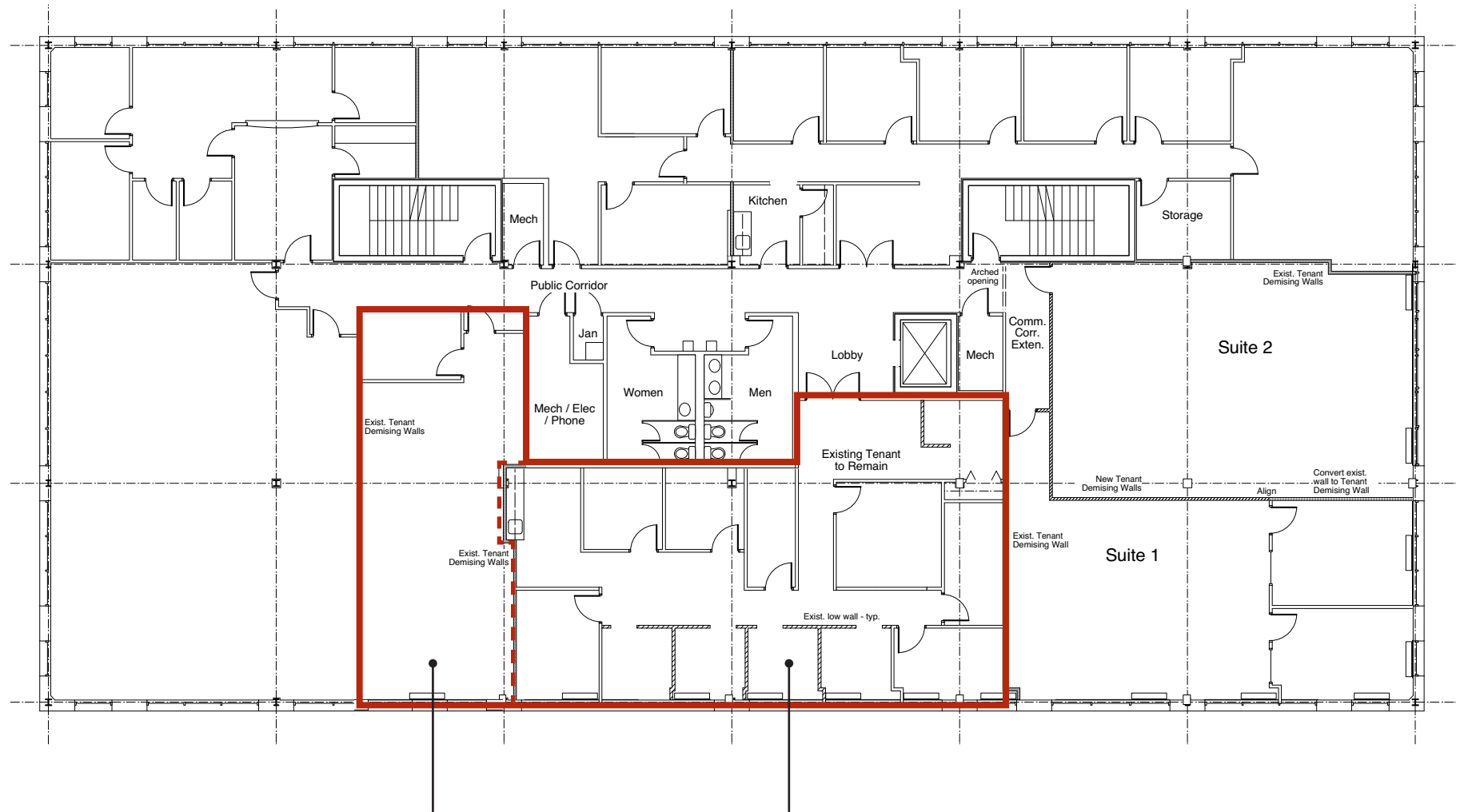


# FLOOR PLAN: 2ND FLOOR





# FLOOR PLAN: 3RD FLOOR



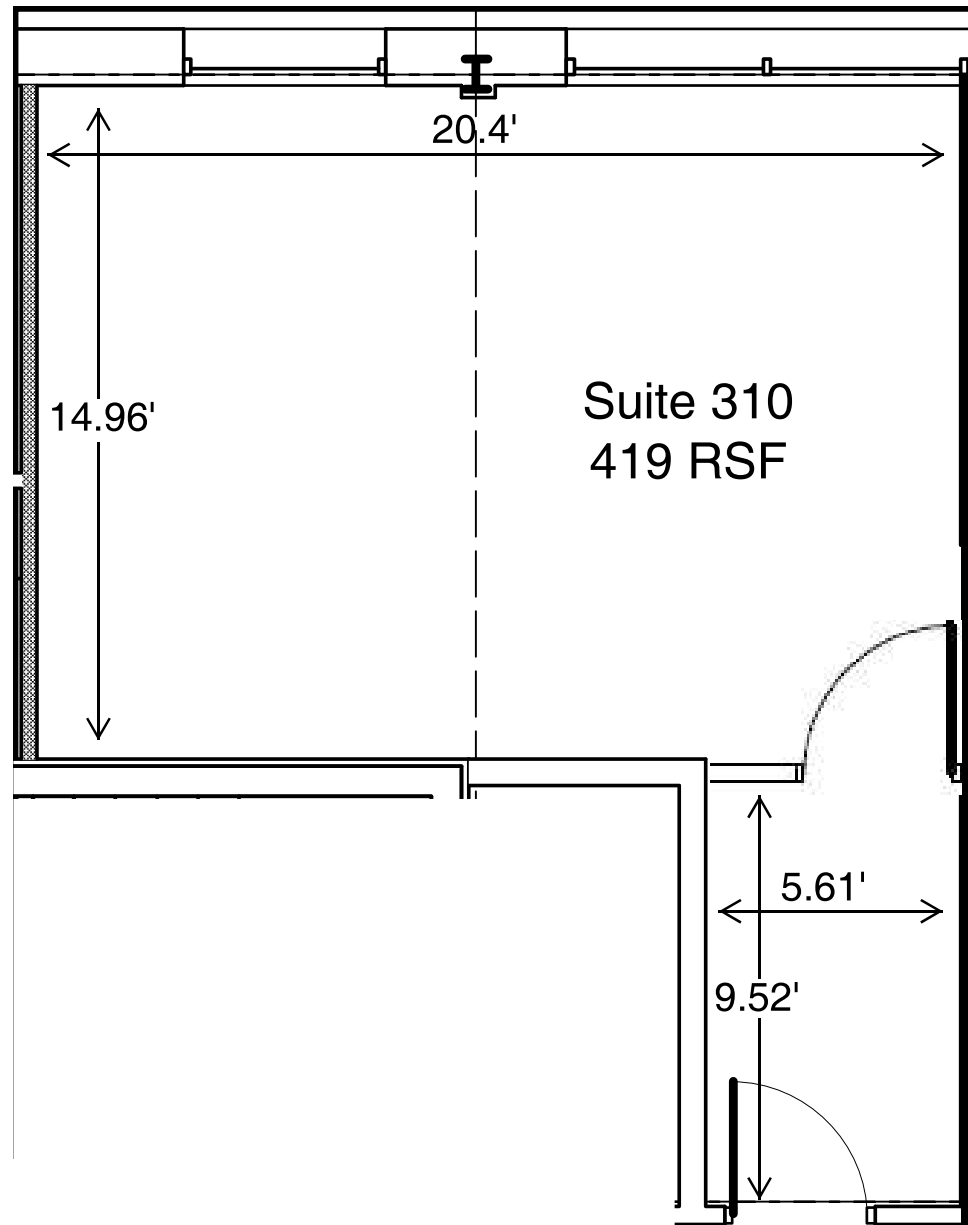
885 RSF

1,887 RSF

SUITE 300: 885 - 2,772 RSF



# FLOOR PLAN: SUITE 310





# LOCAL BIRDSEYE



SITE

Exxon

MERRIWEATHER  
LAKEHOUSE  
AUTOGRAPH  
COLLECTION  
HOTELS

GrillMarx  
STEAKHOUSE & RAW BAR

SUSHI SONO

WHOLE  
FOODS  
MARKET

THE MALL  
IN COLUMBIA

NORDSTROM

★ macy's



JCPenney

The Cheesecake  
Factory

SHAKE  
SHACK



Chick-fil-A

CHIPOTLE  
MEXICAN GRILL

BIBIBOP

LORD  
TAYLOR



29





# FOR MORE INFO **CONTACT:**



## **BETHANY HOBBS**

*VICE PRESIDENT*

**410.953.0359**

**BHOBBS@mackenziecommercial.com**



## **MORGAN WIMBROW**

*SENIOR REAL ESTATE ADVISOR*

**410.494.4846**

**MWIMBROW@mackenziecommercial.com**



VISIT **PROPERTY PAGE** FOR MORE INFORMATION.



# **MACKENZIE**

COMMERCIAL REAL ESTATE SERVICES, LLC

**410-821-8585**

**2328 W. Joppa Road, Suite 200  
Lutherville, MD 21093**

OFFICES IN:

**ANNAPOLIS**

**BALTIMORE**

**BEL AIR**

**COLUMBIA**

**LUTHERVILLE**

**[www.MACKENZIECOMMERCIAL.com](http://www.MACKENZIECOMMERCIAL.com)**

No warranty or representation, expressed or implied, is made as to the accuracy of the information contained herein, and same is submitted subject to errors, omissions, change of price, rental or other conditions, withdrawal without notice, and to any specific listing conditions imposed by our principals.