



LAKEFRONT 17 BUILDING

5570 STERRETT PLACE | COLUMBIA, MARYLAND 21044

FOR
LEASE



MACKENZIE

COMMERCIAL REAL ESTATE SERVICES, LLC

PROPERTY OVERVIEW

HIGHLIGHTS:

- Several suites have woodland views
- Newly renovated lobby, hallways, and bathrooms
- Prime location near Columbia Lakefront and across from The Mall In Columbia
- Easy access to Route 29 and Route 175
- Plenty of parking

AVAILABLE:

SUITE 103: 224 RSF
SUITE 104: 2,354 RSF*
SUITE 208: 852 RSF (SUBLEASE
THROUGH 3/31/27)
SUITE 210: 2,047 RSF
SUITE 300: 885 - 2,772 RSF

*DIRECT ENTRY WITH EXTERIOR
BUILDING SIGNAGE

BUILDING SIZE:

32,358 SF

PARKING:

4/1,000 SF

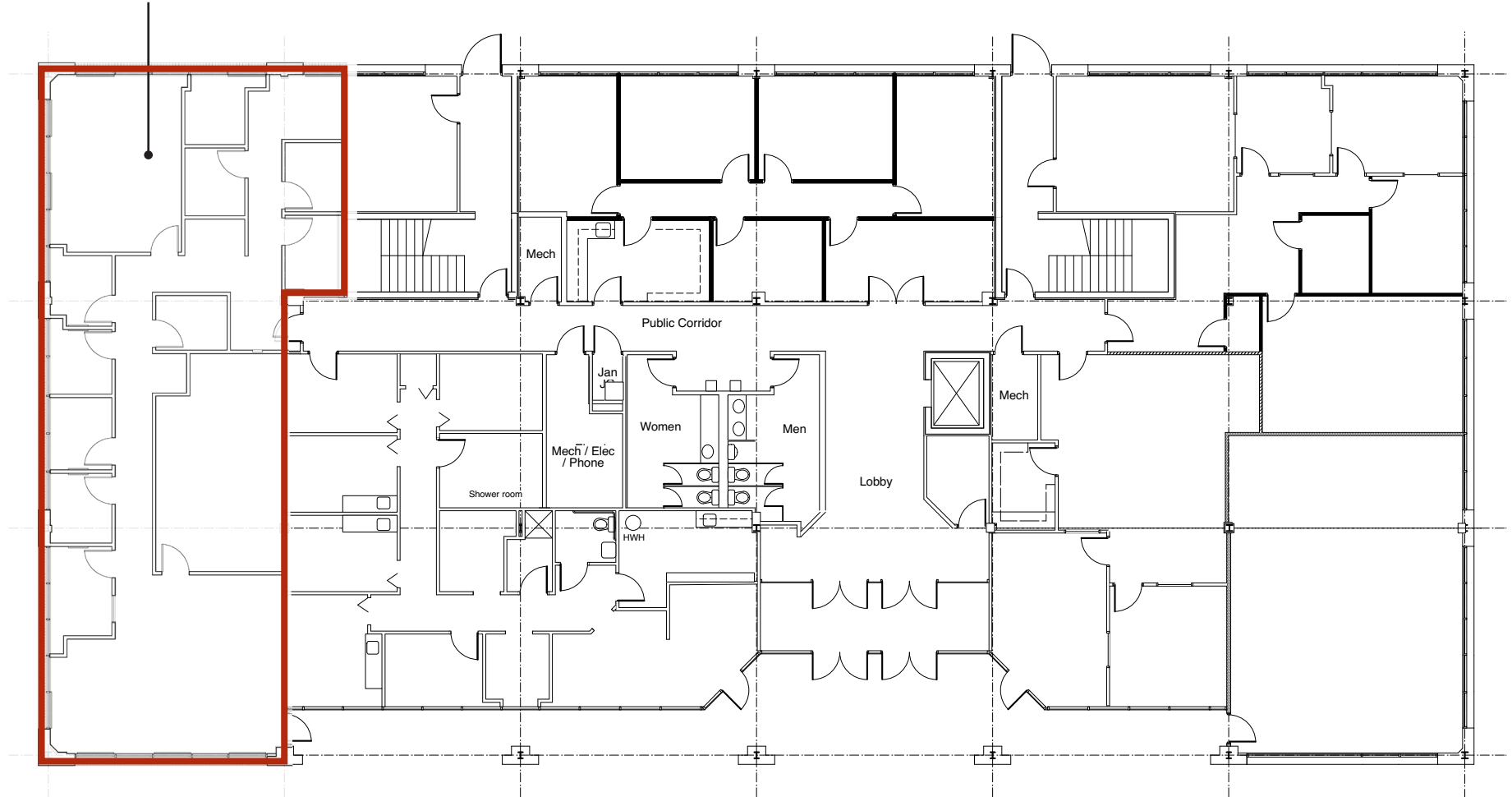
RENTAL RATE:

WITHHELD

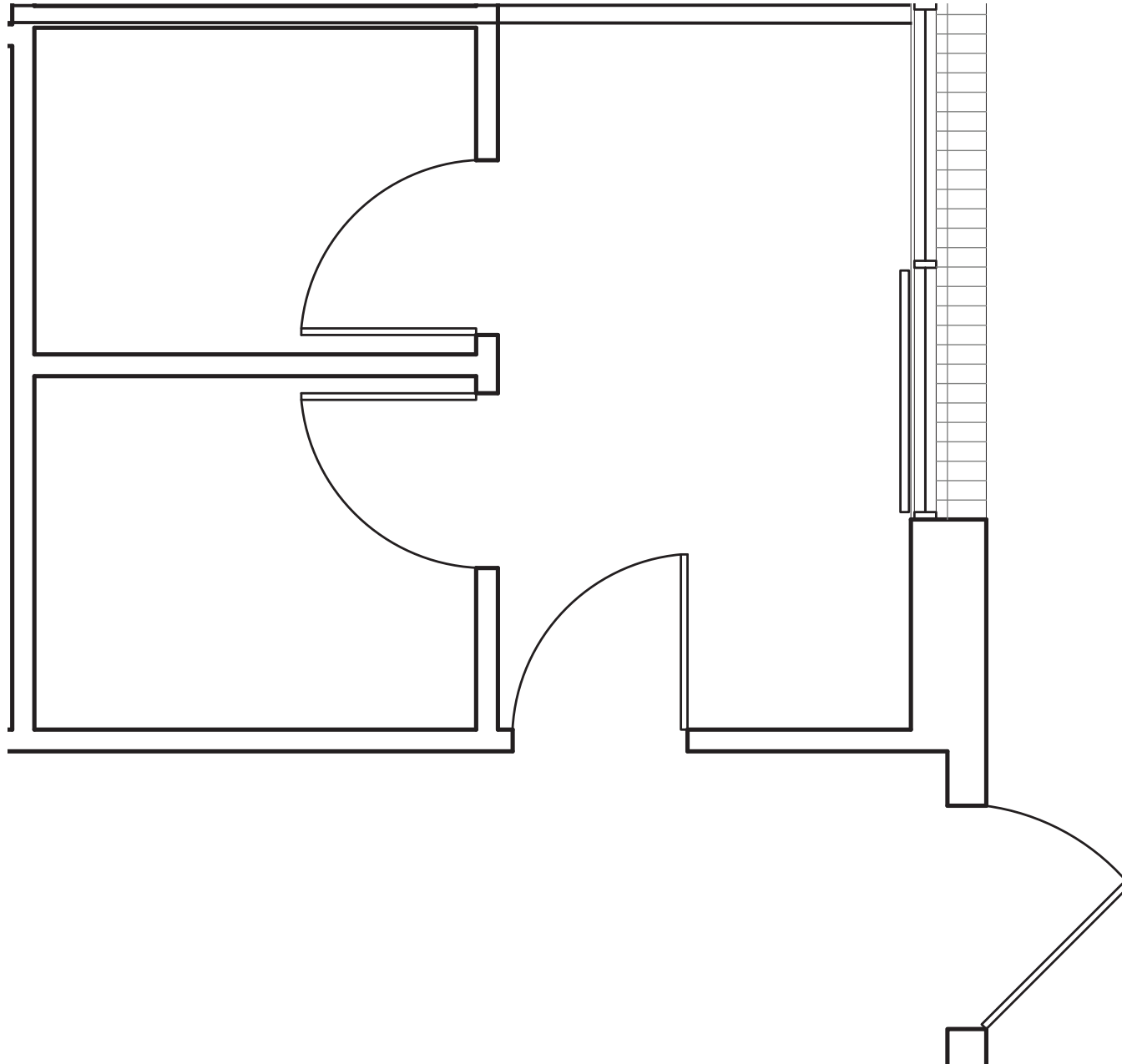


FLOOR PLAN: 1ST FLOOR

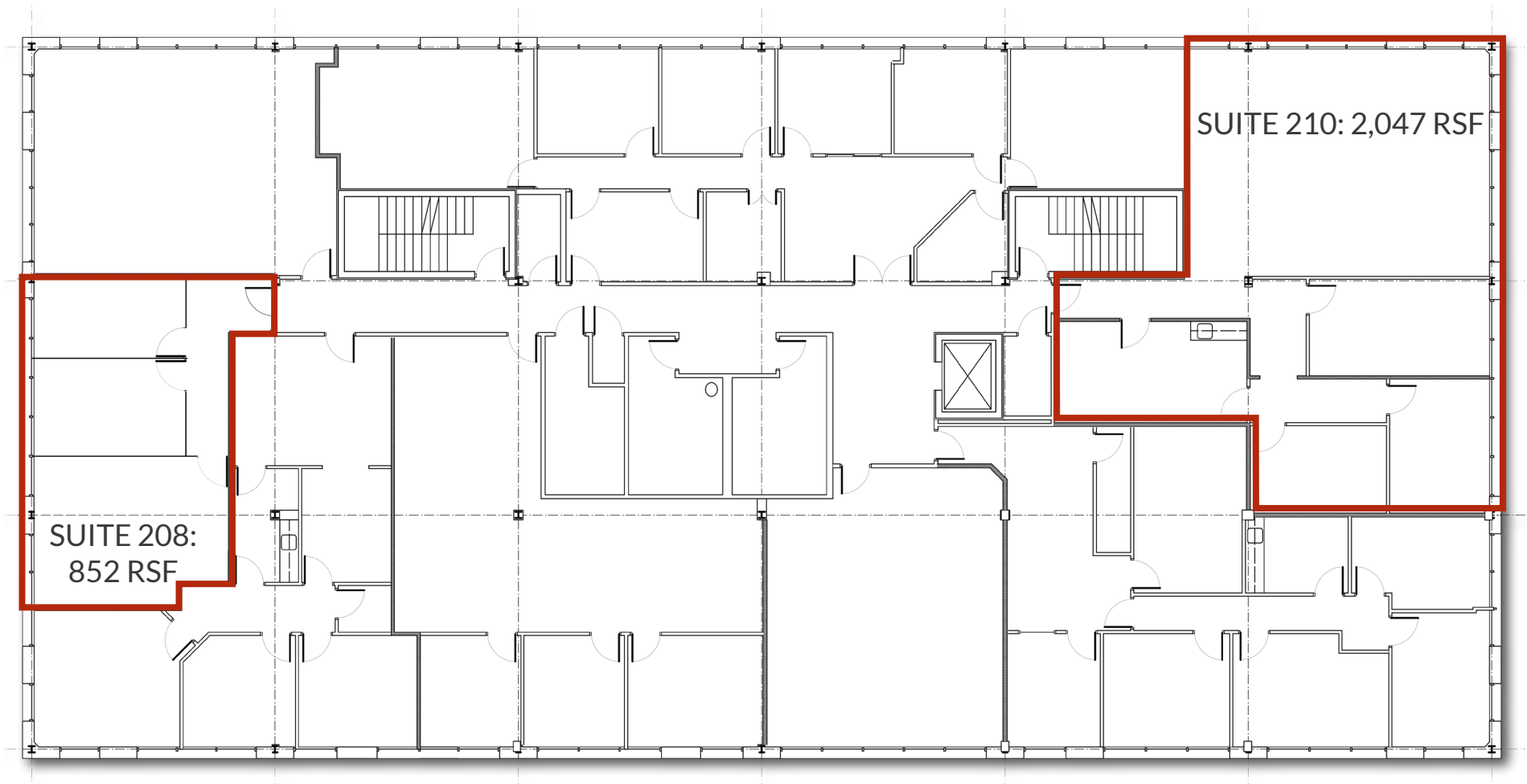
SUITE 104
2,354 SF



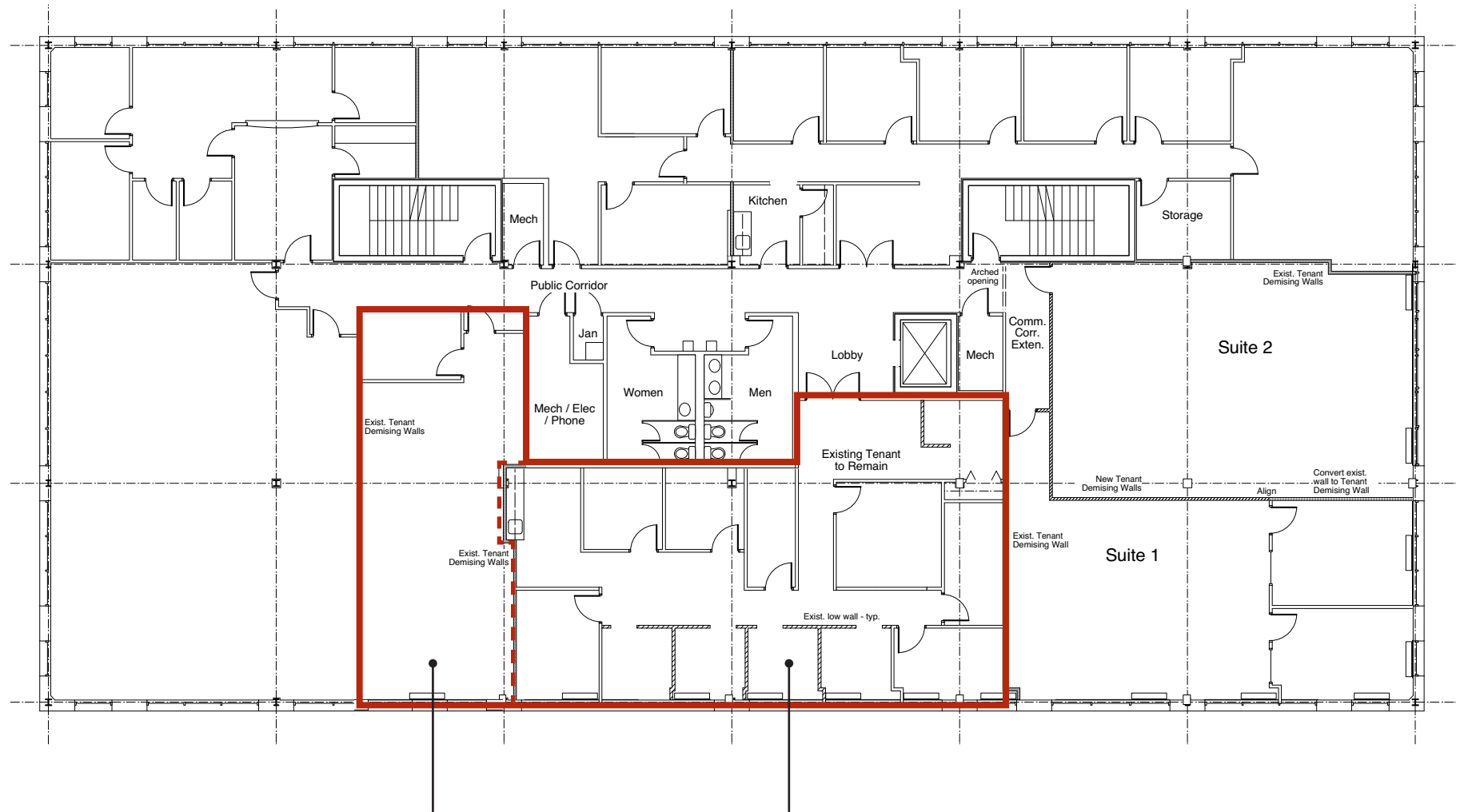
FLOOR PLAN: **SUITE 103**



FLOOR PLAN: 2ND FLOOR



FLOOR PLAN: 3RD FLOOR



885 RSF

1,887 RSF

SUITE 300: 885 - 2,772 RSF

LOCAL BIRDSEYE



SITE

Exxon

MERRIWEATHER
LAKEHOUSE
AUTOGRAPH
COLLECTION
HOTELS

GrillMarx
STEAKHOUSE & RAW BAR

SUSHI SONO

WHOLE
FOODS
MARKET

THE MALL
IN COLUMBIA

NORDSTROM

★ macy's



JCPenney

The
cheesecake
Factory

SHAKE
SHACK



Chick-fil-A

CHIPOTLE
MEXICAN GRILL

BIBIBOP

LORD
TAYLOR



29



FOR MORE INFO **CONTACT:**



BETHANY HOBBS

VICE PRESIDENT

410.953.0359

BHOBBS@mackenziecommercial.com



MORGAN WIMBROW

SENIOR REAL ESTATE ADVISOR

410.494.4846

MWIMBROW@mackenziecommercial.com



VISIT **PROPERTY PAGE** FOR MORE INFORMATION.



MACKENZIE

COMMERCIAL REAL ESTATE SERVICES, LLC

410-821-8585

**2328 W. Joppa Road, Suite 200
Lutherville, MD 21093**

OFFICES IN:

ANNAPOLIS

BALTIMORE

BEL AIR

COLUMBIA

LUTHERVILLE

www.MACKENZIECOMMERCIAL.com

No warranty or representation, expressed or implied, is made as to the accuracy of the information contained herein, and same is submitted subject to errors, omissions, change of price, rental or other conditions, withdrawal without notice, and to any specific listing conditions imposed by our principals.