



# THE MARITIME CENTER

6610 TRIBUTARY STREET | BALTIMORE, MARYLAND 21224

FOR  
LEASE



**MACKENZIE**

COMMERCIAL REAL ESTATE SERVICES, LLC



# PROPERTY OVERVIEW

## HIGHLIGHTS:

- Direct access to the Port of Baltimore
- Easy access to I-95 and Baltimore City
- Located in the Holabird Business Park
- On-site management

AVAILABLE:

SUITE 205: 1,546 RSF

TERM:

3-5 YEARS

PARKING:

5.4: 1,000 SF

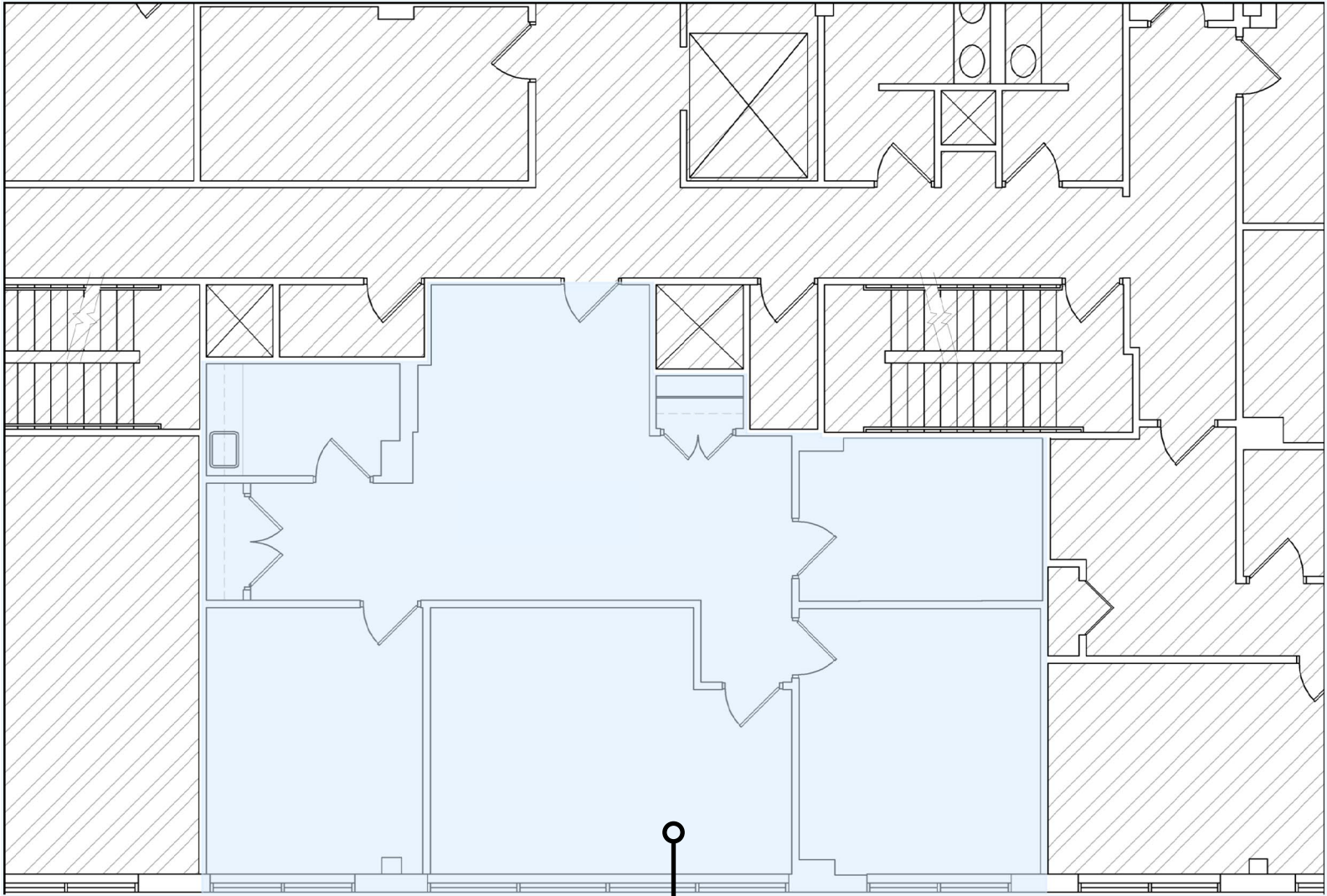
RENTAL RATE:

\$20.00/SF FS





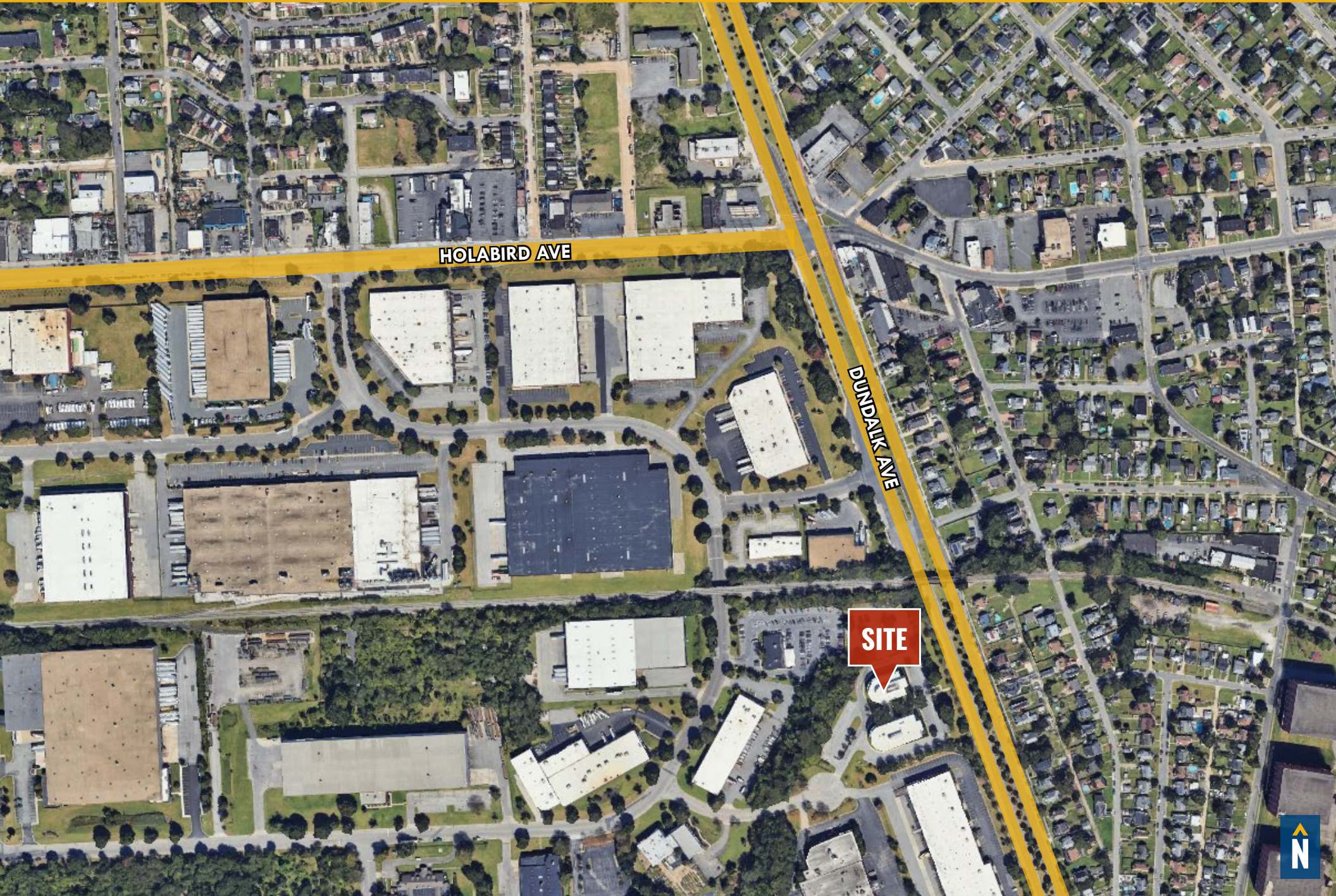
# FLOOR PLAN: **SUITE 205**



**SUITE 205**  
**1,546 RSF**



# LOCAL AERIAL





# FOR MORE INFO **CONTACT:**



## **JOE BRADLEY**

*SENIOR VICE PRESIDENT & PRINCIPAL*

**410.494.4892**

**JBRADLEY@mackenziecommercial.com**



## **DYLAN BOZEL**

*REAL ESTATE ADVISOR*

**410.494.4896**

**DBOZEL@mackenziecommercial.com**



VISIT **PROPERTY PAGE** FOR MORE INFORMATION.



# **MACKENZIE**

COMMERCIAL REAL ESTATE SERVICES, LLC

**410-821-8585**

**2328 W. Joppa Road, Suite 200  
Lutherville, MD 21093**

OFFICES IN:

**ANNAPOLIS**

**BALTIMORE**

**BEL AIR**

**COLUMBIA**

**LUTHERVILLE**

**[www.MACKENZIECOMMERCIAL.com](http://www.MACKENZIECOMMERCIAL.com)**

No warranty or representation, expressed or implied, is made as to the accuracy of the information contained herein, and same is submitted subject to errors, omissions, change of price, rental or other conditions, withdrawal without notice, and to any specific listing conditions imposed by our principals.