



6 PARK CENTER COURT

OWINGS MILLS, MARYLAND 21117

FOR
LEASE



MACKENZIE

COMMERCIAL REAL ESTATE SERVICES, LLC

PROPERTY OVERVIEW

HIGHLIGHTS:

- Individually controlled heating and cooling within each suite
- Excellent Reisterstown Road visibility
- Well-designed flexible suite layout
- Easily accessible from I-695 and I-795
- Short drive to many local amenities including Foundry Row

AVAILABLE:

SUITE 105: 1,619 SF
SUITE 107: 1,983 SF
SUITE 201: 1,418 SF
SUITE 203: 1,472 SF

TERM:

NEGOTIABLE

PARKING:

4.1 : 1,000 SF

RENTAL RATE:

\$19.50/SF, MG

BROKER

BONUS* \$2/SF

* Bonus in addition to standard full market commission on a 5-10 year lease.

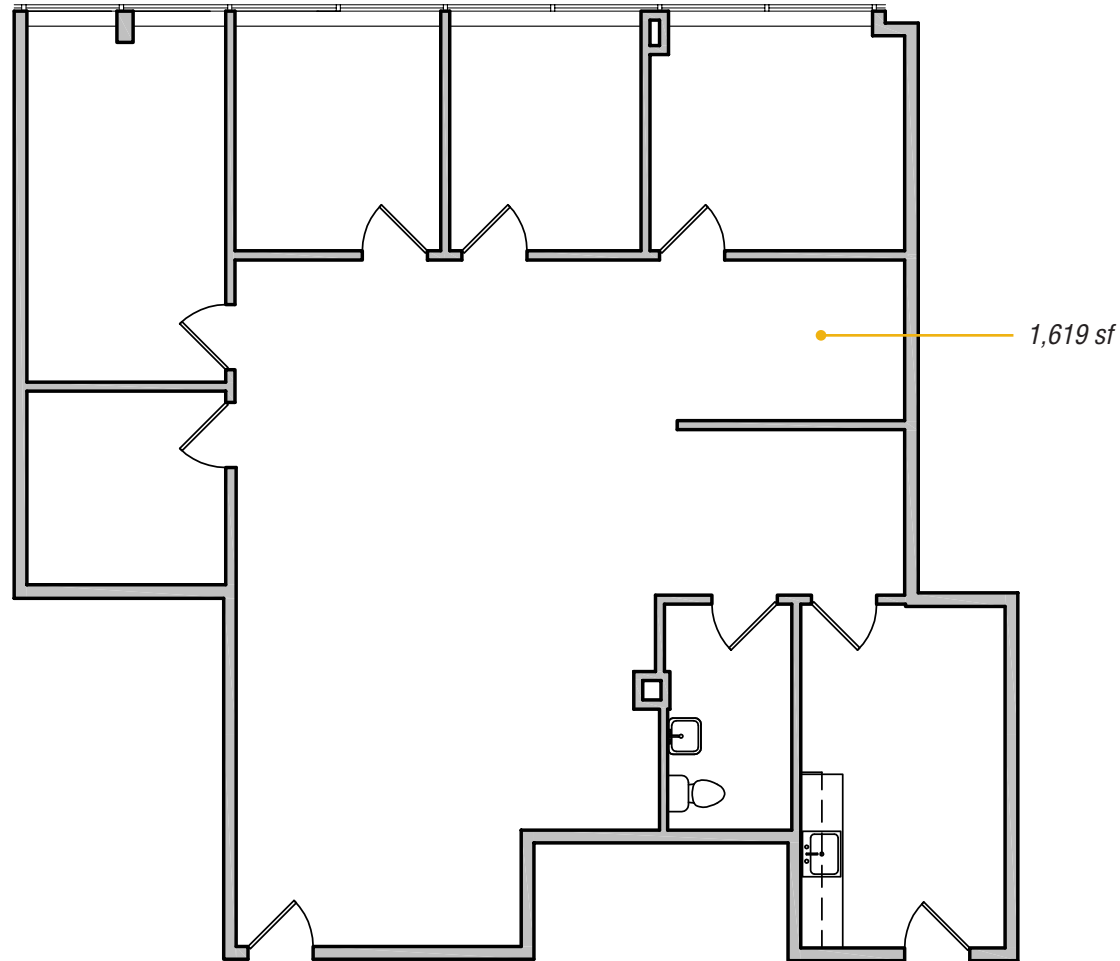
NOW THROUGH 12/31/2024

\$50 FOR QUALIFIED SHOWINGS

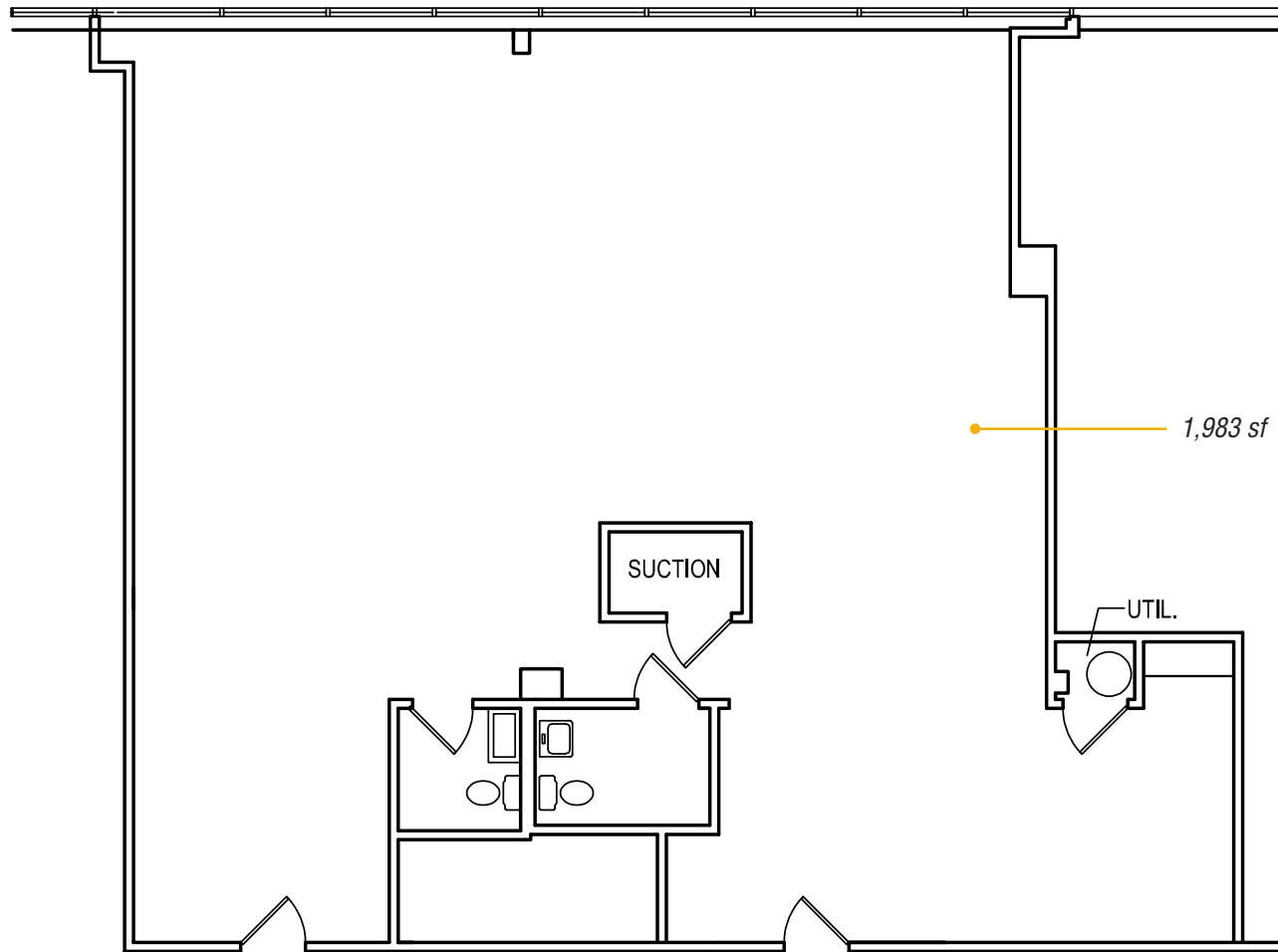


GOOGLE STREET VIEW

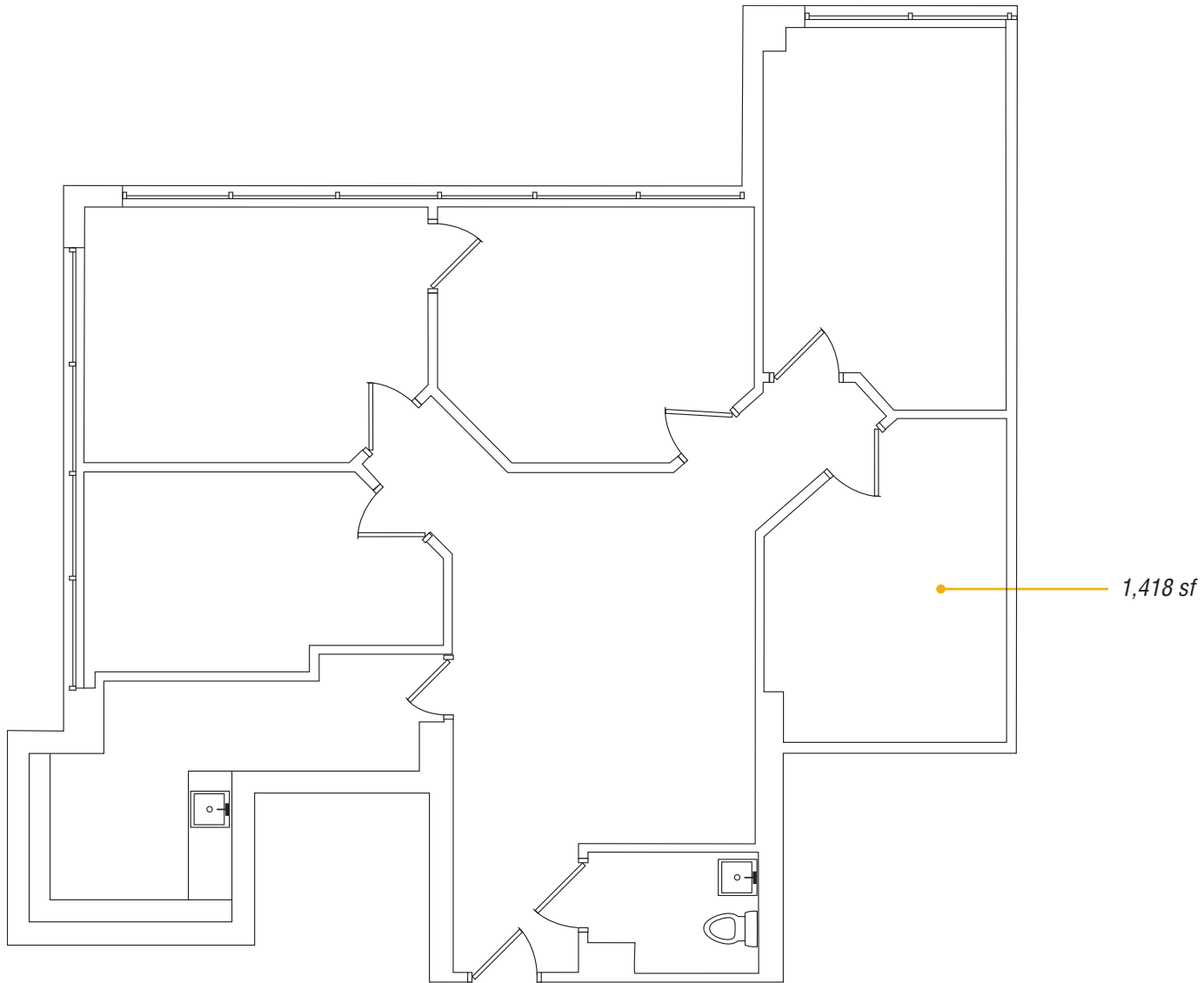
FLOOR PLAN: SUITE 105



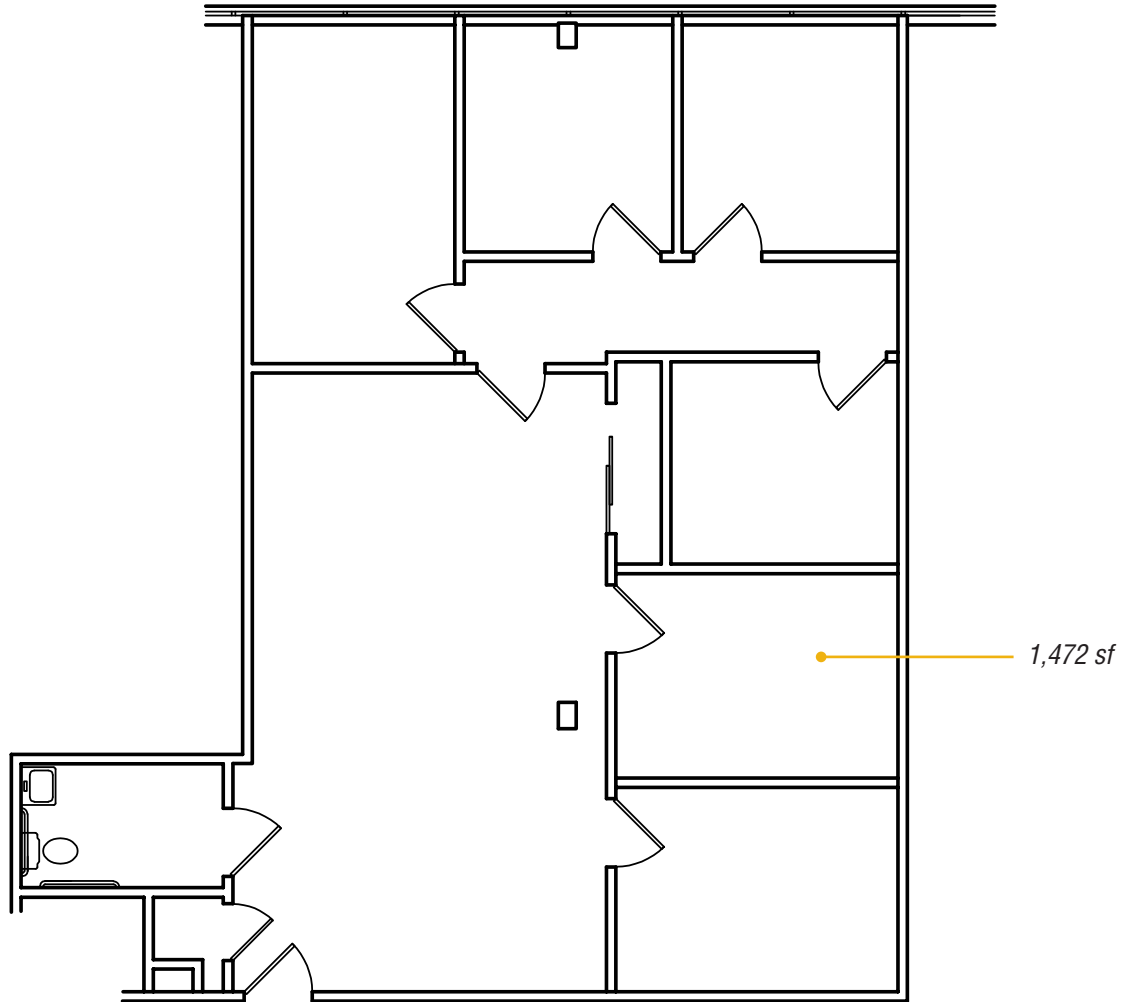
FLOOR PLAN: SUITE 107



FLOOR PLAN: SUITE 201



FLOOR PLAN: SUITE 203



LOCAL BIRDSEYE



FOR MORE INFO CONTACT:



MATT MUELLER

SENIOR VICE PRESIDENT & PRINCIPAL

410.494.6658

MMUELLER@mackenziecommercial.com



JOE BRADLEY

SENIOR VICE PRESIDENT & PRINCIPAL

410.494.4892

JBRADLEY@mackenziecommercial.com



HENSON FORD

VICE PRESIDENT

410.494.6657

HFORD@mackenziecommercial.com



DYLAN BOZEL

REAL ESTATE ADVISOR

410.494.4896

DBOZEL@mackenziecommercial.com



VISIT **PROPERTY PAGE** FOR MORE INFORMATION.



MACKENZIE

COMMERCIAL REAL ESTATE SERVICES, LLC

410-821-8585

2328 W. Joppa Road, Suite 200
Lutherville, MD 21093

OFFICES IN: ANNAPOLIS, MD BALTIMORE, MD BEL AIR, MD COLUMBIA, MD **LUTHERVILLE, MD** CHARLOTTESVILLE, VA

www.MACKENZIECOMMERCIAL.com

No warranty or representation, expressed or implied, is made as to the accuracy of the information contained herein, and same is submitted subject to errors, omissions, change of price, rental or other conditions, withdrawal without notice, and to any specific listing conditions imposed by our principals.