

# SALE/LEASE

Baltimore County, MD

# MAIDEN CHOICE MEDICAL CENTER

716 MAIDEN CHOICE LANE | CATONSVILLE, MARYLAND 21228

## AVAILABLE

Suite 301: 1,380 sf  
Suite 306: 920 sf  
Contiguous up to 2,300 sf

## USE

Medical Office Condominium

## SALE PRICE

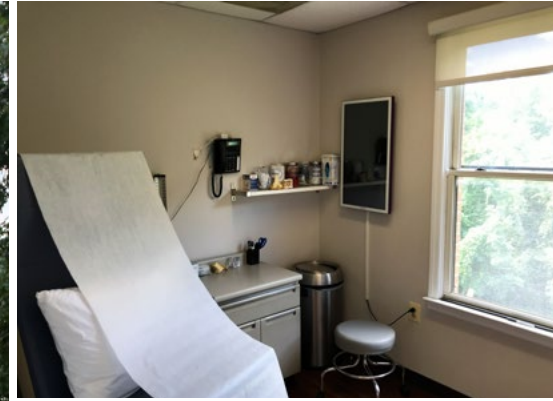
\$450,000

## RENTAL RATE

\$19.00/sf, net utilities and  
janitorial

## HIGHLIGHTS

- ▶ Two contiguous medical office condos for lease or sale
- ▶ Turn-key and fully furnished
- ▶ Would make a great office location for orthopedic, rheumatology, physical therapy, etc.
- ▶ Close proximity to the intersection of Wilkins Avenue/ Route 372 and I-695, with nearby access to I-95

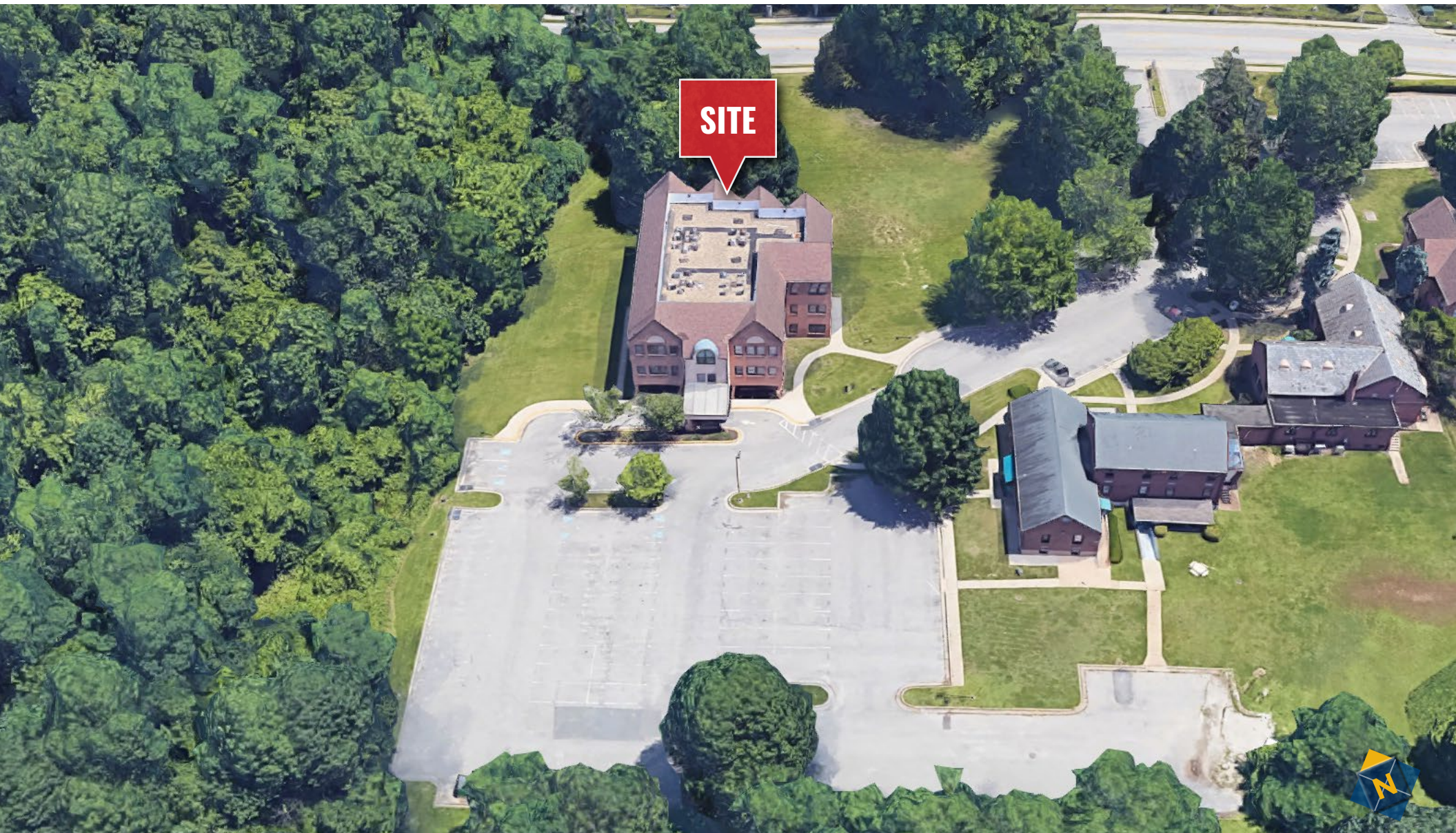


# SALE/LEASE

 Baltimore County, MD

# BIRDSEYE

MAIDEN CHOICE MEDICAL CENTER | 716 MAIDEN CHOICE LANE | CATONSVILLE, MARYLAND 21228

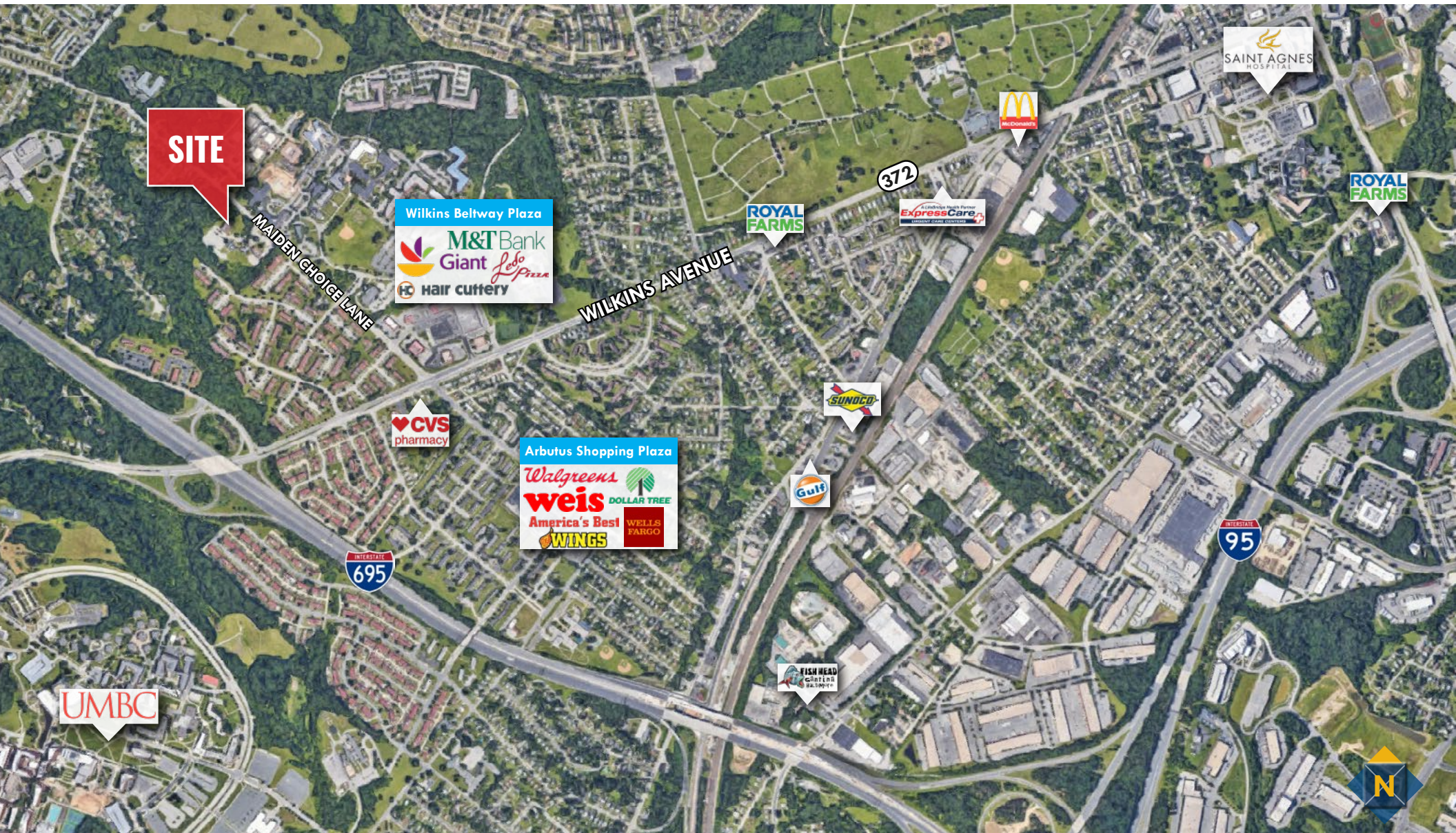


# SALE/LEASE

Baltimore County, MD

# AERIAL

MAIDEN CHOICE MEDICAL CENTER | 716 MAIDEN CHOICE LANE | CATONSVILLE, MARYLAND 21228



# SALE/LEASE

Baltimore County, MD

# FLOOR PLAN

MAIDEN CHOICE MEDICAL CENTER | 716 MAIDEN CHOICE LANE | CATONSVILLE, MARYLAND 21228

