



# THE O'DEA MEDICAL ARTS BUILDING

7505 OSLER DRIVE  
TOWSON | MARYLAND



# FOR LEASE

Baltimore County, MD

# THE O'DEA MEDICAL ARTS BUILDING

7505 OSLER DRIVE | TOWSON, MARYLAND 21204

## AVAILABLE

Suite 408 - 410: 1,132 sf - 3,358 sf

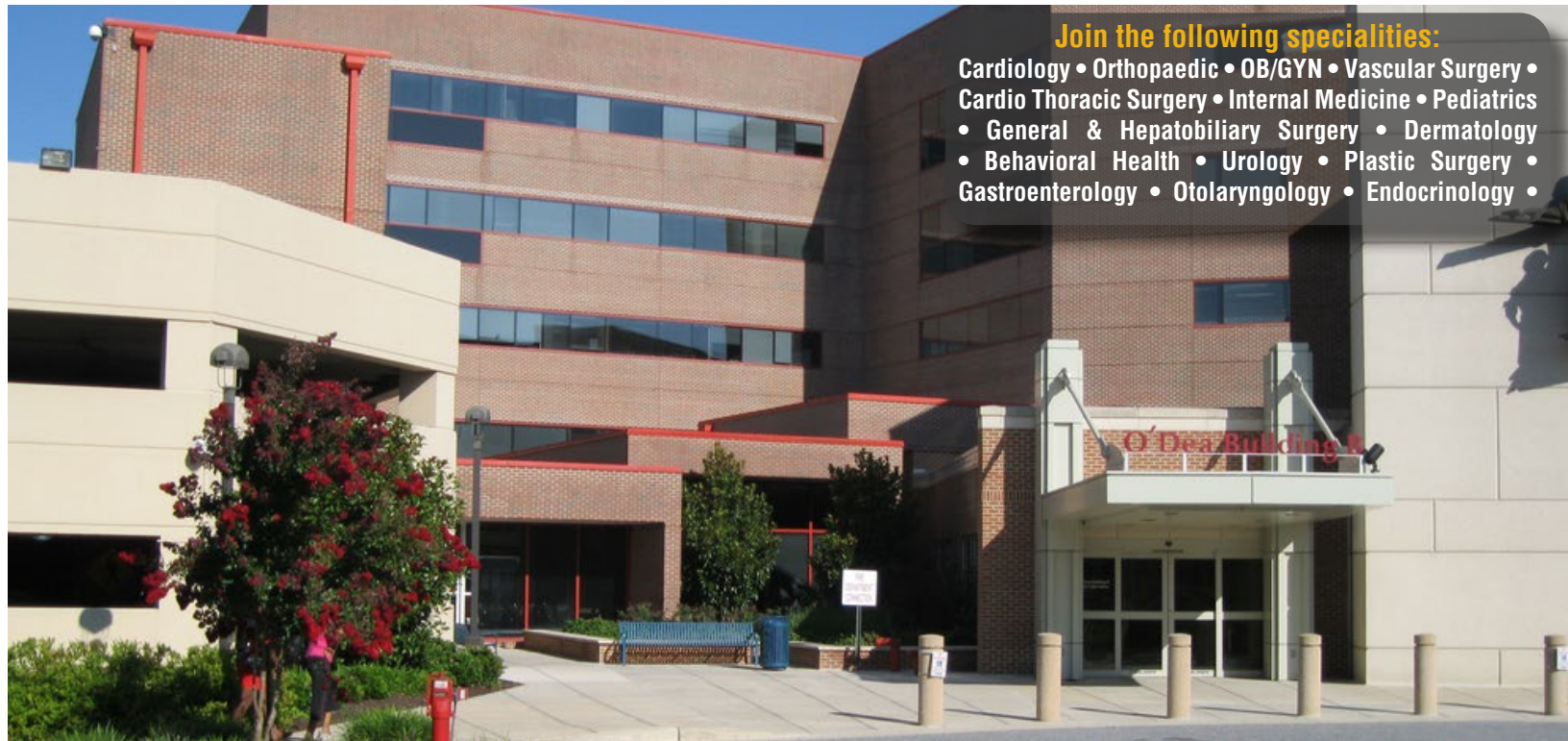
Suite 501: 1,728 sf

## RENTAL RATE

\$26.50/sf, FS

## HIGHLIGHTS

- ▶ Class A medical office space available on the campus of University of Maryland St. Joseph Medical Center
- ▶ A variety of sizes to accommodate large and small practices
- ▶ Covered parking with direct access to the building
- ▶ Easy access to I-695 via N. Charles Street



## Join the following specialities:

Cardiology • Orthopaedic • OB/GYN • Vascular Surgery •  
Cardio Thoracic Surgery • Internal Medicine • Pediatrics  
• General & Hepatobiliary Surgery • Dermatology  
• Behavioral Health • Urology • Plastic Surgery •  
Gastroenterology • Otolaryngology • Endocrinology •



**Joe Bradley**

☎ 410.494.4892

✉ jbradley@mackenziecommercial.com

MacKenzie Commercial Real Estate Services, LLC • 410-821-8585 • 2328 W. Joppa Road, Suite 200 | Lutherville-Timonium, Maryland 21093 • www.MACKENZIECOMMERCIAL.com

**Matt Mueller**

☎ 410.494.6658

✉ mmueller@mackenziecommercial.com

**Henson Ford**

☎ 410.494.6657

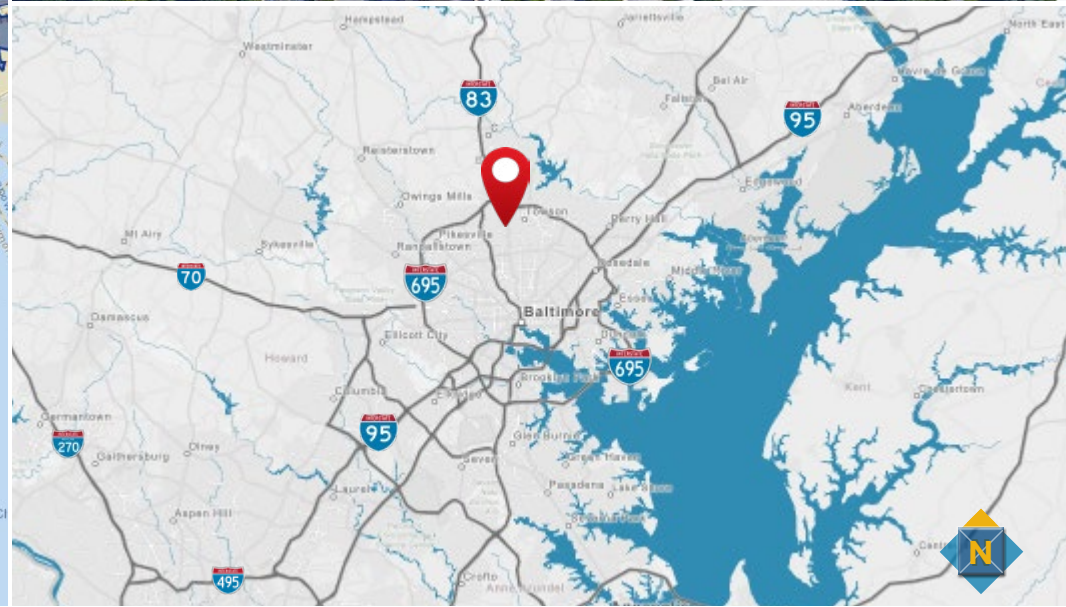
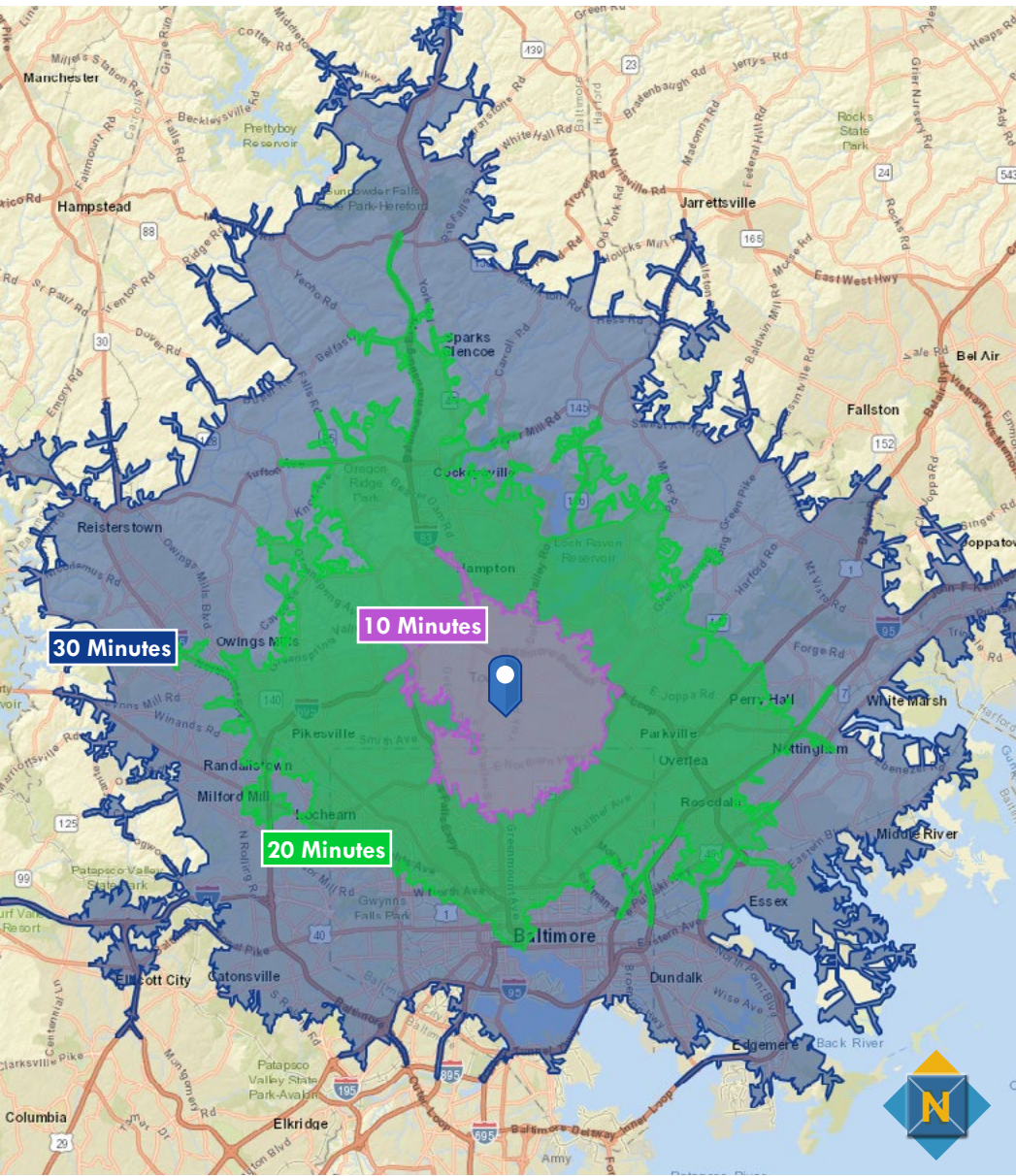
✉ hford@mackenziecommercial.com

# FOR LEASE

Baltimore County, MD

# LOCATION

THE O'DEA MEDICAL ARTS BUILDING | 7505 OSLER DRIVE | TOWSON, MARYLAND 21204

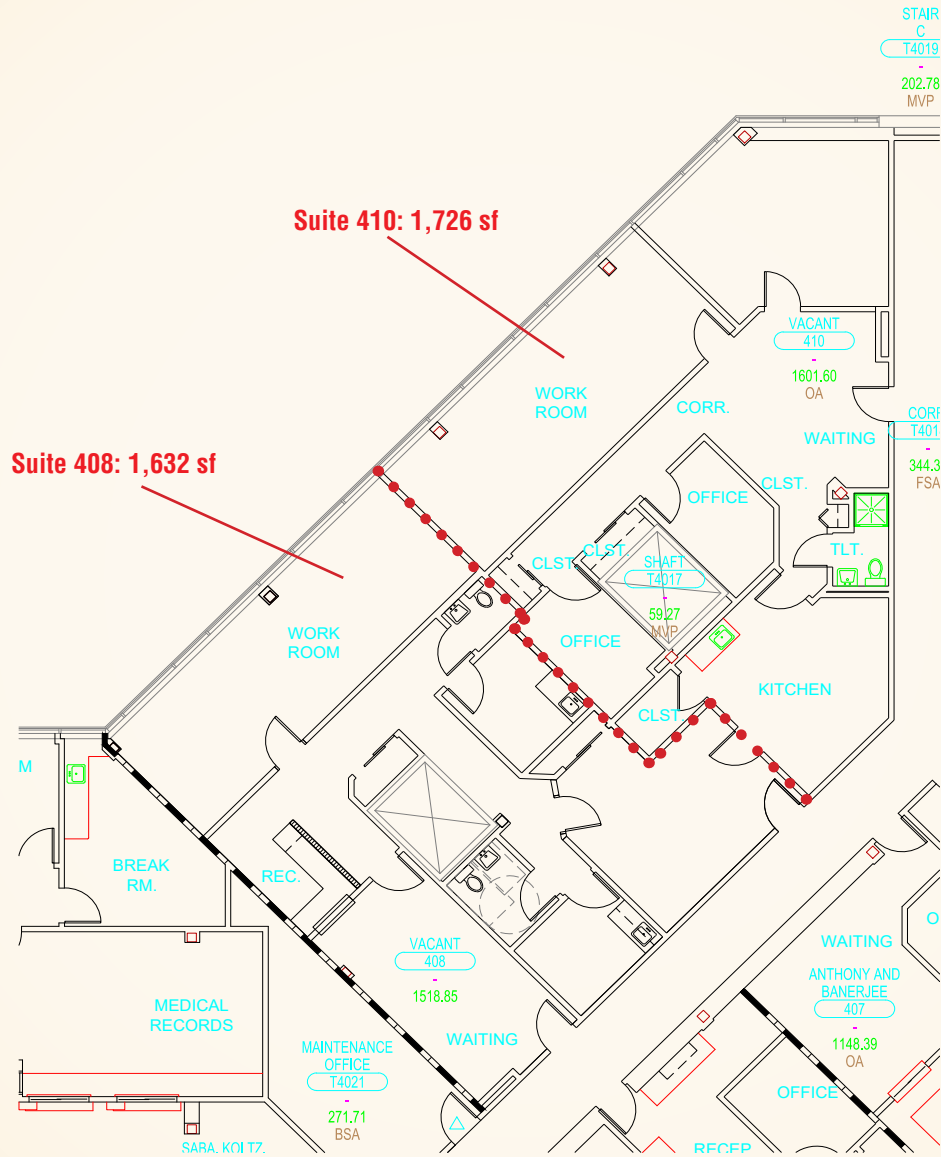


# FOR LEASE

Baltimore County, MD

# FLOOR PLAN: 4TH FLOOR

THE O'DEA MEDICAL ARTS BUILDING | 7505 OSLER DRIVE | TOWSON, MARYLAND 21204



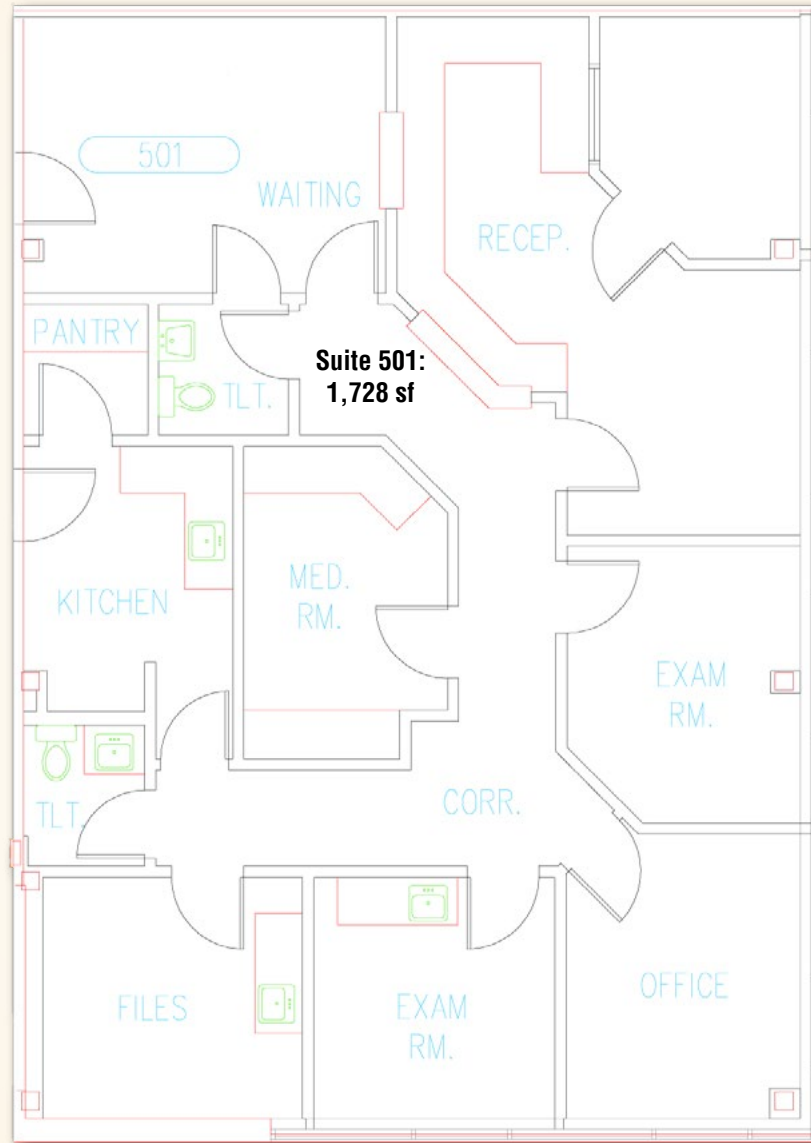
# FOR LEASE

Baltimore County, MD

# FLOOR PLAN: 5TH FLOOR

THE O'DEA MEDICAL ARTS BUILDING | 7505 OSLER DRIVE | TOWSON, MARYLAND 21204

## FIFTH FLOOR



# FOR LEASE

Baltimore County, MD

# DEMOGRAPHICS

THE O'DEA MEDICAL ARTS BUILDING | 7505 OSLER DRIVE | TOWSON, MARYLAND 21204

## MEDICAL EXPENDITURES

	1 mile	2 miles	3 miles
<b>Total Healthcare</b>	\$46,390,427	\$159,658,464	\$322,888,640
<b>Physician Services</b>	\$17,010,969	\$57,643,301	\$15,190,367
<b>Eyecare Services</b>	\$521,638	\$1,791,621	\$3,652,462
<b>Lab Tests, X-Rays</b>	\$525,265	\$1,779,586	\$3,613,342
<b>Dental Services</b>	\$2,255,644	\$10,980,712	\$22,031,327
<b>Prescription Drugs</b>	\$3,353,959	\$12,106,516	\$24,594,452
<b>Nonprescription Drugs</b>	\$1,108,559	\$3,821,785	\$7,673,748
<b>Eyeglasses and Contact Lenses</b>	\$818,714	\$2,762,550	\$5,569,633
<b>Median Age</b>	24.9	35.0	36.1

