

SALE/LEASE

Howard County, Maryland

MIDTOWN MEDICAL BUILDING

7625 MAPLE LAWN BOULEVARD | FULTON, MARYLAND 20759

AVAILABLE

Suite 135: 980 sf

BUILDING SIZE

65,000

PARKING

5.1/1,000 sf

SALE PRICE

\$328,000

RENTAL RATE

\$35/sf MG

HIGHLIGHTS

- ▶ Rarely-available office condominium for lease in Maple Lawn
- ▶ Abundance of free unreserved parking
- ▶ Located in the heart of Maple Lawn
- ▶ Maple Lawn is a mixed-use community built on the principles of the Traditional Neighborhood Development. Conveniently located 20 miles north of Washington D.C.
- ▶ Local amenities include Hudson Coastal Raw Bar and Grille, Harris Teeter, CVS, Looney's Pub South, Firestone, Ranazul, PNC Bank, and many more



Trish Farrell | Senior Vice President/Principal
☎ 410.974.9003 ✉ tfarrell@mackenziecommercial.com

Dave Sciamarelli | Principal, Key CRE
☎ 973.713.1846 ✉ dave@key-cre.com



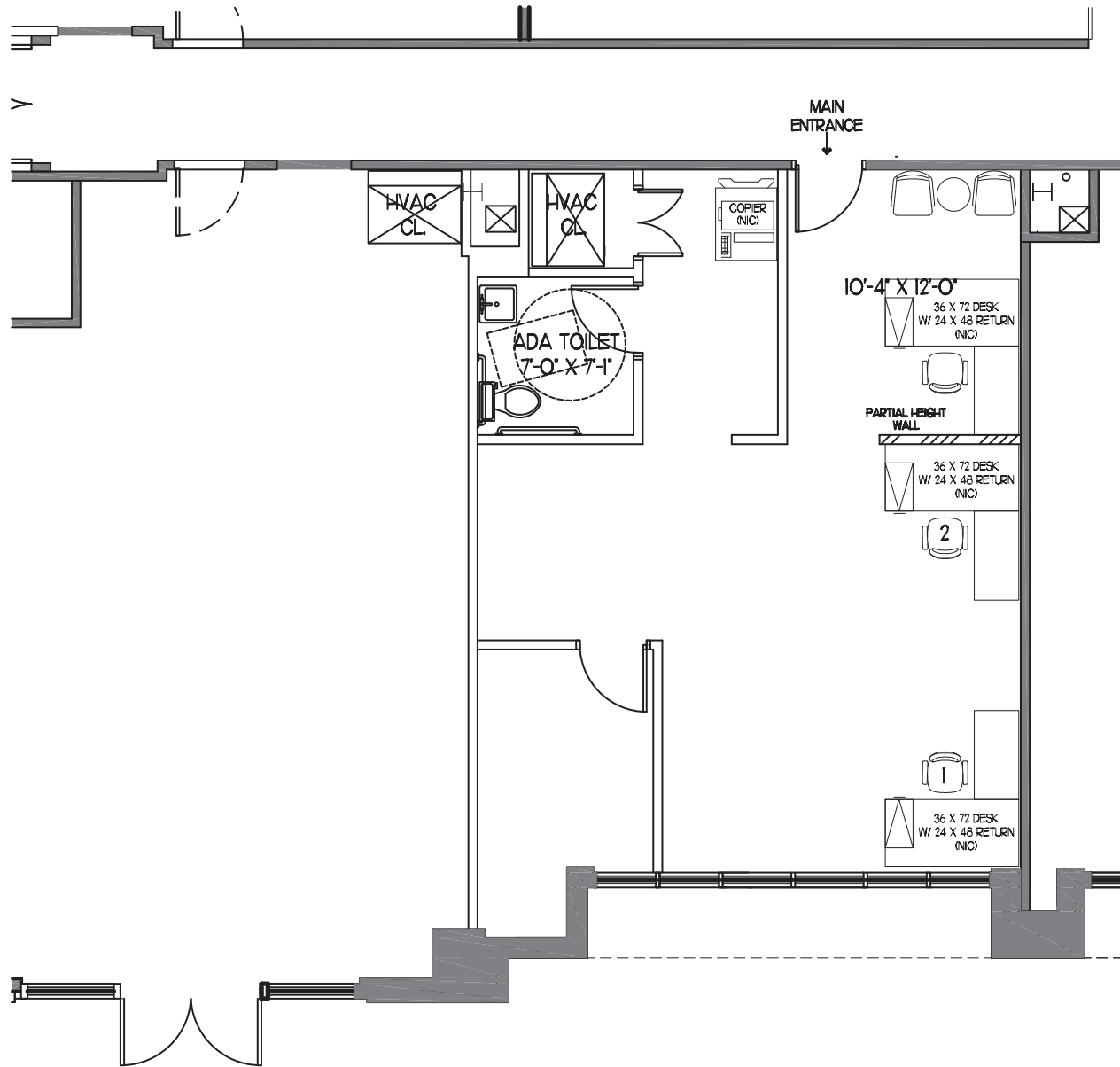
SALE/LEASE



Howard County, Maryland

FLOOR PLAN

MIDTOWN MEDICAL BUILDING | 7625 MAPLE LAWN BOULEVARD | FULTON, MARYLAND 20759



SALE/LEASE

Howard County, Maryland

BIRDSEYE

MIDTOWN MEDICAL BUILDING | 7625 MAPLE LAWN BOULEVARD | FULTON, MARYLAND 20759

