



FOR **LEASE**

THE GATEHOUSE AT MCDONOGH CROSSROADS

7920 MCDONOGH ROAD | OWINGS MILLS, MARYLAND 21117



MACKENZIE

COMMERCIAL REAL ESTATE SERVICES, LLC

PROPERTY OVERVIEW

HIGHLIGHTS:

- Reisterstown Road signage available
- Individually controlled heating and cooling
- Shopping and dining options located within walking distance
- Average daily traffic approximately 35,000 vehicles

AVAILABLE:

SUITE 203: 1,365 SF ±

BUILDING SIZE:

16,000 SF ±

ELEVATORS:

ONE

PARKING:

4:1,000 SF

ZONING:

O2 (OFFICE)

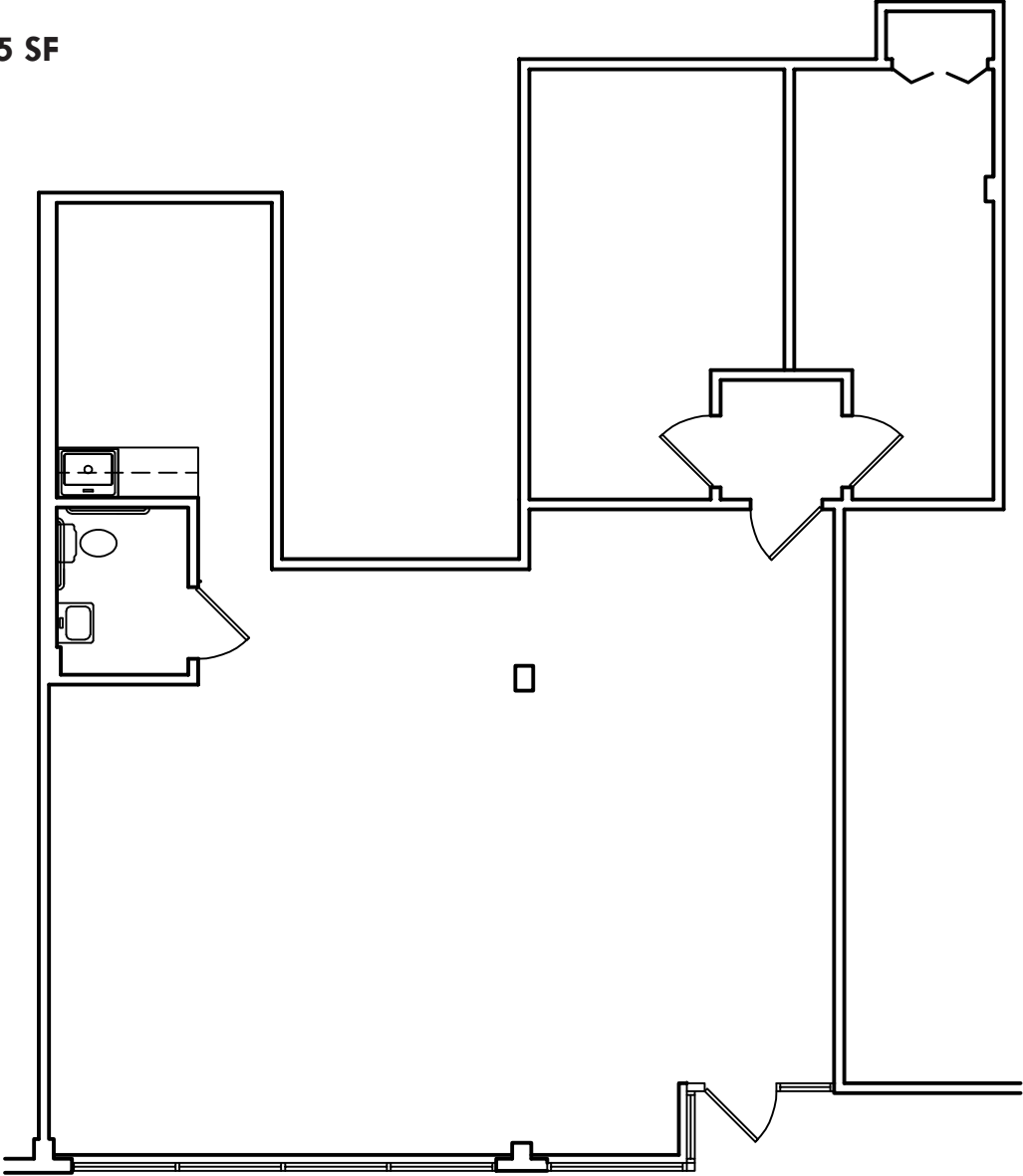
RENTAL RATE:

\$22.50 PSF, MG



FLOOR PLAN

Suite 203: 1,365 SF



MARKET AERIAL



Valley Centre

- ALDI
- GINZA OF TOKYO
- FRIDAYS America's Best
- T.J. maxx
- ROSS
- DOLLAR TREE
- WINGS

Valley Village Shopping Center

- SMOOTHIE KING
- Rita's
- Seasons Pizza
- LENNY'S
- WING STOP

SITE

Festival at Woodholme

- TRADER JOE'S
- COLD STONE CREAMERY
- BARNES & NOBLE



DEMOGRAPHICS

2025

RADIUS:

1 MILE

3 MILES

5 MILES

RESIDENTIAL POPULATION



9,340

78,325

227,041

DAYTIME POPULATION



12,250

78,371

209,214

AVERAGE HOUSEHOLD INCOME



\$130,249

\$121,900

\$115,715

NUMBER OF HOUSEHOLDS



3,774

31,989

90,680

MEDIAN AGE

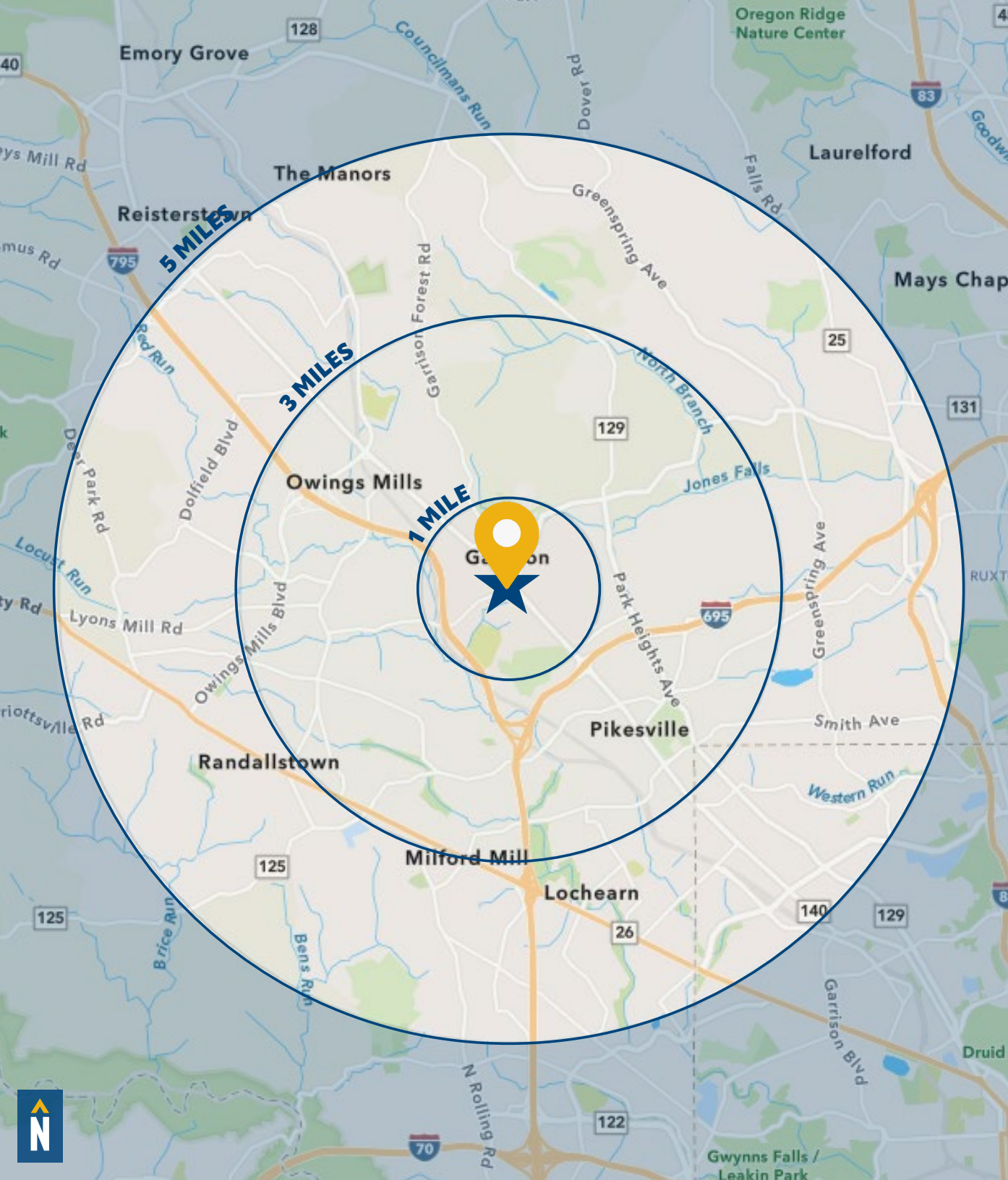


39.3

41.0

40.6

[FULL DEMOS REPORT](#)



FOR MORE INFO CONTACT:



MATT MUELLER

SENIOR VICE PRESIDENT & PRINCIPAL

410.494.6658

MMUELLER@mackenziecommercial.com

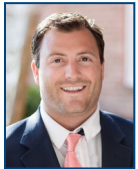


HENSON FORD

VICE PRESIDENT

410.494.6657

HFORD@mackenziecommercial.com



DYLAN BOZEL

SENIOR REAL ESTATE ADVISOR

410.494.4896

DBOZEL@mackenziecommercial.com



JOE BRADLEY

SENIOR VICE PRESIDENT & PRINCIPAL

410.494.4892

JBRADLEY@mackenziecommercial.com



LEASE MACKENZIE
410.821.8585
mackenziecommercial.com



MACKENZIE

COMMERCIAL REAL ESTATE SERVICES, LLC

410-821-8585

2328 W. Joppa Road, Suite 200
Lutherville, MD 21093

OFFICES IN: ANNAPOLIS, MD BALTIMORE, MD BEL AIR, MD COLUMBIA, MD LUTHERVILLE, MD CHARLOTTESVILLE, VA

www.MACKENZIECOMMERCIAL.com



VISIT **PROPERTY PAGE** FOR MORE INFORMATION

No warranty or representation, expressed or implied, is made as to the accuracy of the information contained herein, and same is submitted subject to errors, omissions, change of price, rental or other conditions, withdrawal without notice, and to any specific listing conditions imposed by our principals.