

FOR LEASE

Baltimore County, MD

WINDSOR COURT

8320 BELLONA AVENUE | TOWSON, MARYLAND 21204

AVAILABLE

- Suite 240: 2,025 sf
- *Suite 140B: 1,330 sf
- *Suite 100C: 1,787 sf
- *Suite 150B: 2,118 sf
- *Suite 200A: 1,401 sf
- *Suite 220B: 3,960 sf
- *Suite 210C: 1,818 sf
- *Available 1/1/2025

RENTAL RATE

Suite 240: \$19.00/sf, MG

OCCUPANCY

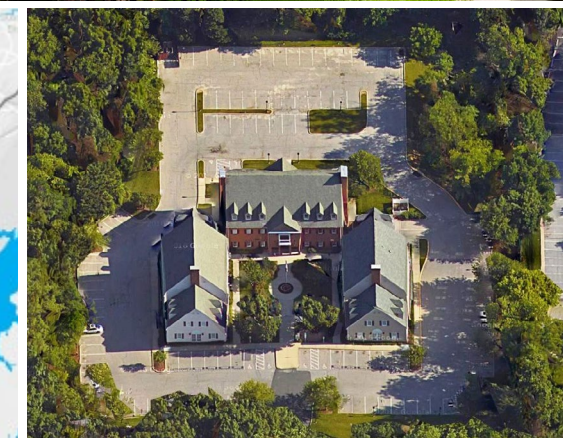
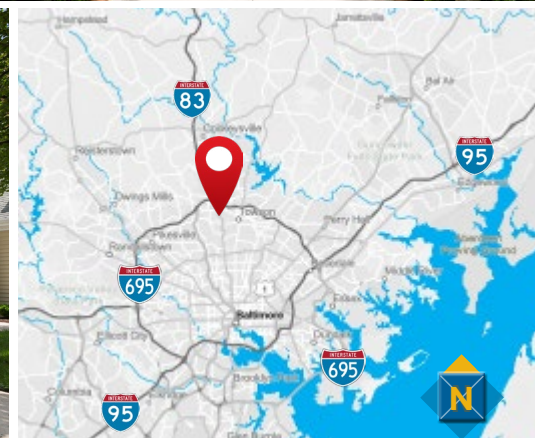
Immediate

PARKING

4.5:1,000 sf

HIGHLIGHTS

- ▶ Two blocks west of Charles Street, and I-695 at Exit 25 South
- ▶ Exclusive outdoor entrances and private restrooms
- ▶ Exclusive HVAC
- ▶ 24-hour access
- ▶ Ample parking



Henson Ford
410.494.6657
hford@mackenziecommercial.com

Matt Mueller
410.494.6658
mmueller@mackenziecommercial.com

Joe Bradley
410.494.4892
jbradley@mackenziecommercial.com

MacKenzie Commercial Real Estate Services, LLC • 410-821-8585 • 2328 W. Joppa Road, Suite 200 | Lutherville-Timonium, Maryland 21093 • www.MACKENZIECOMMERCIAL.com

FOR LEASE

Baltimore County, MD

SUITE 240: 2,025 SF

WINDSOR COURT | 8320 BELLONA AVENUE | TOWSON, MARYLAND 21204

