



# 806 N COLLINGTON AVE

BALTIMORE, MARYLAND 21205

FOR  
SALE



**MACKENZIE**

COMMERCIAL REAL ESTATE SERVICES, LLC



# PROPERTY OVERVIEW

## HIGHLIGHTS:

- ADJACENT to Johns Hopkins Medical Campus
- Transportation services nearby in short drive time
- Wet sprinkler system throughout



### AVAILABLE:

25,600 SF ±  
12 APARTMENT UNITS  
APPROXIMATELY 13,000 SF OF  
OFFICE/AMENITY SPACE

### SITE SIZE:

0.24 ACRES

### ROOF:

METAL & TPO

### ZONING:

R8 (RESIDENTIAL)

### LISTING PRICE:

\$2,100,000

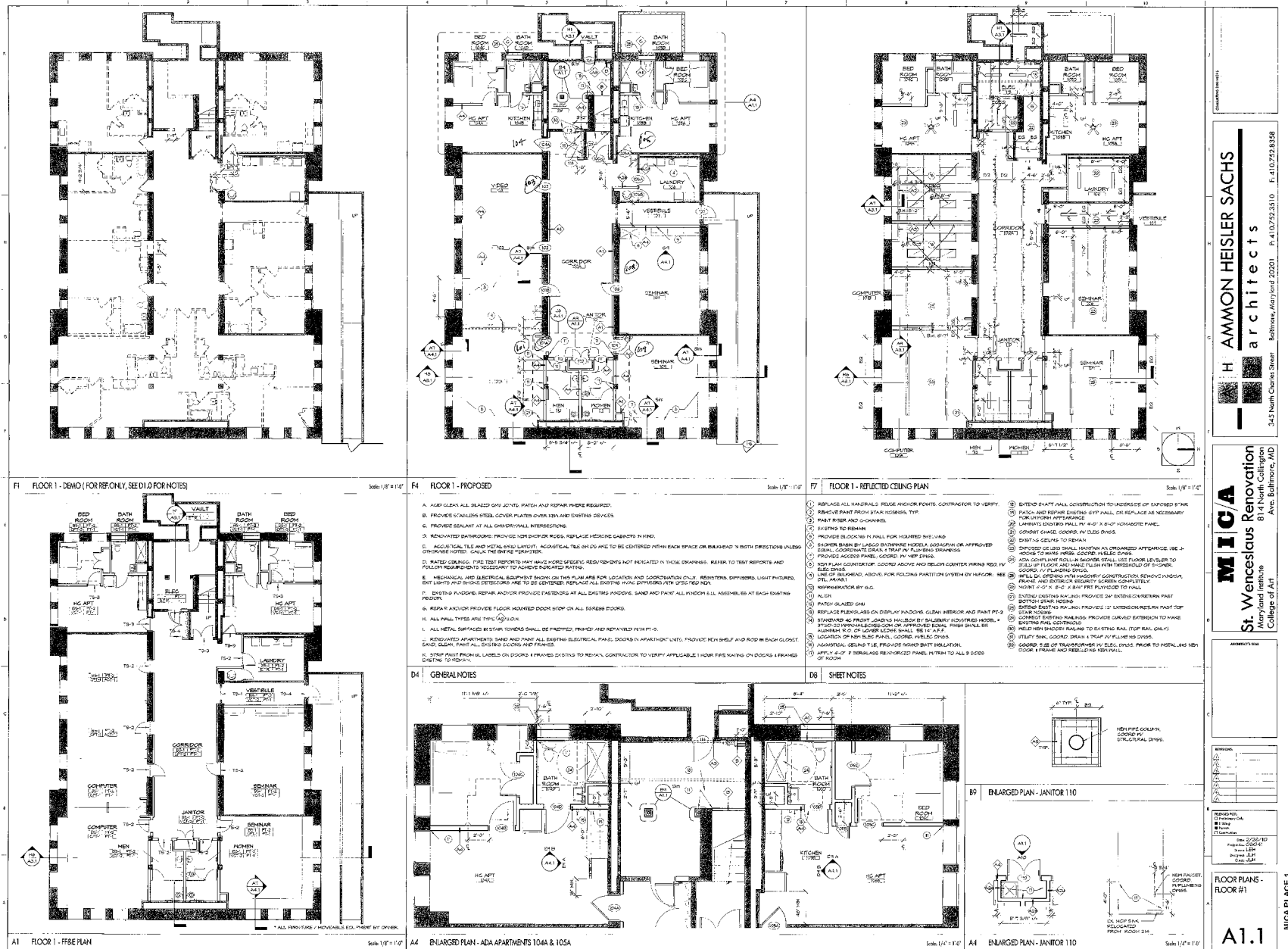


GOOGLE STREET VIEW





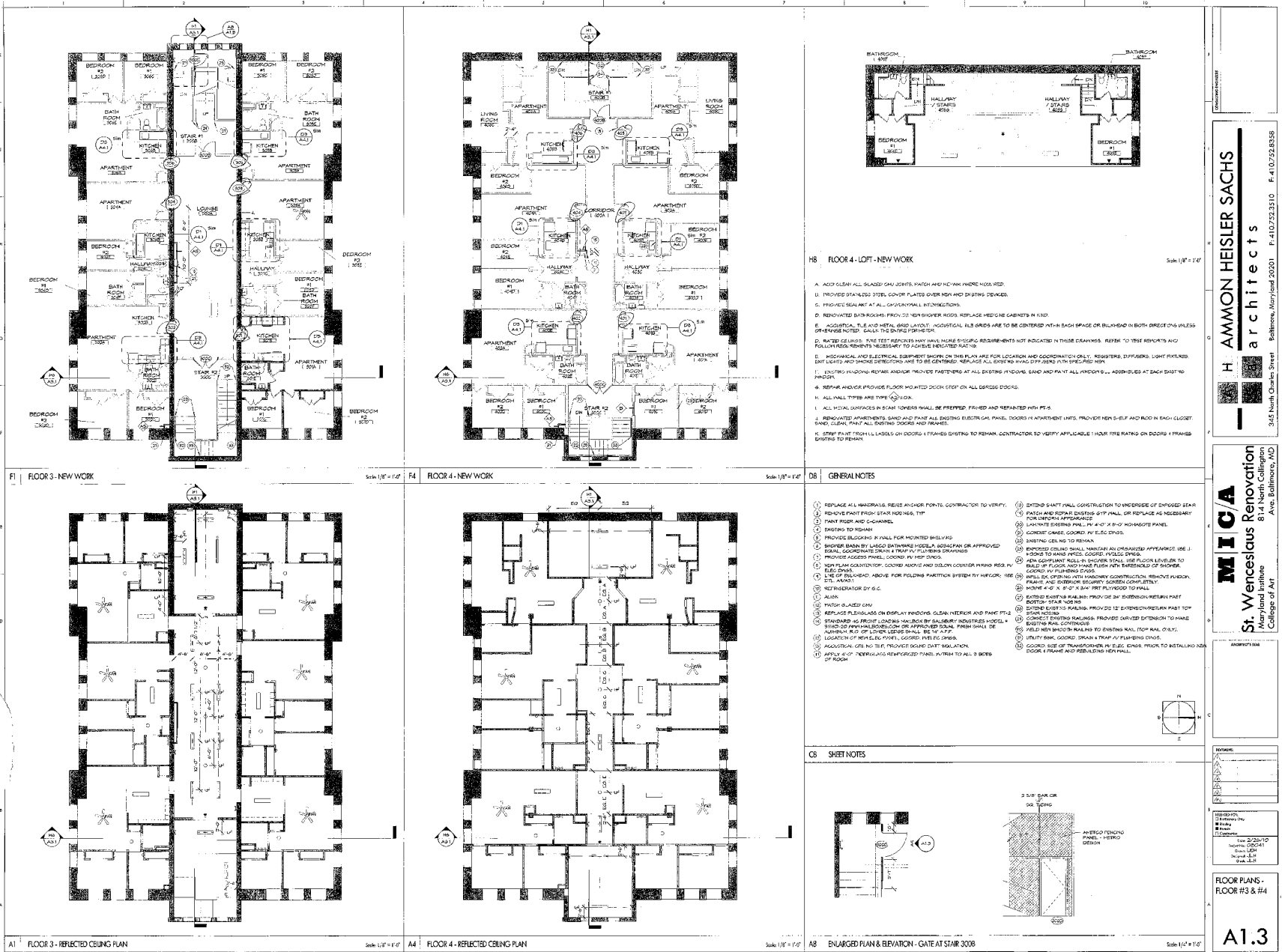
## FLOOR PLAN: 1ST FLOOR



[illegible]



## FLOOR PLAN: 3RD FLOOR





# INTERIOR PHOTOS





# LOCAL BIRDSEYE



FELLS POINT



BALTIMORE INNER HARBOR



Northeast Market

Welch Medical Library

SITE

Saint Wenceslaus Catholic Church

Walgreen

N WASHINGTON ST

ASHLAND AVE

Henderson Hopkins Elem. School

Henderson Crossing Renovated Townhomes

MADISON ST





# FOR MORE INFO **CONTACT:**



## **CHRIS BOLAND**

SENIOR REAL ESTATE ADVISOR

**410.494.6644**

**CBOLAND@mackenziecommercial.com**



## **PATRICK SMITH, SIOR**

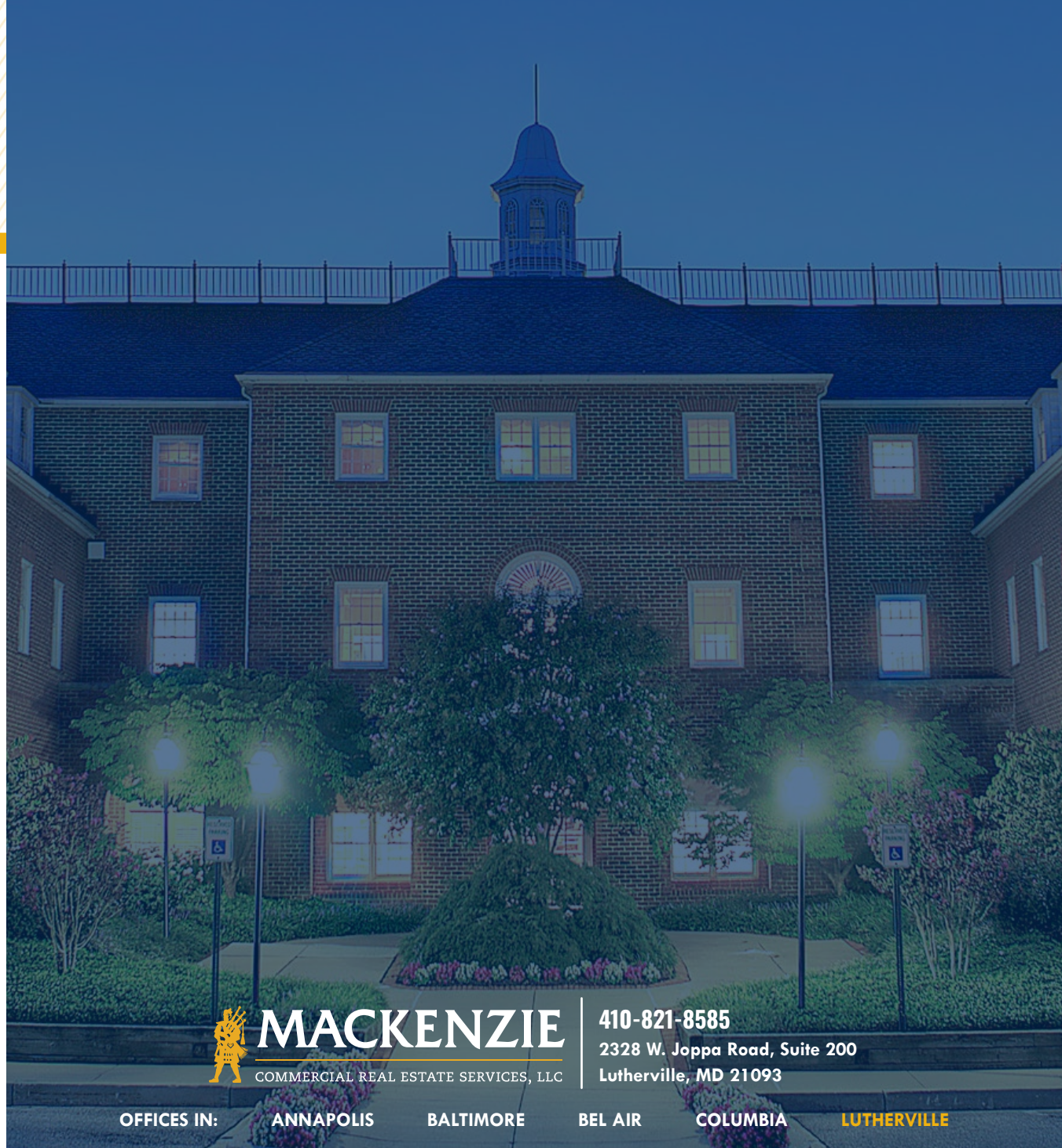
VICE PRESIDENT

**410.494.4866**

**PSMITH@mackenziecommercial.com**



VISIT **PROPERTY PAGE** FOR MORE INFORMATION.



# **MACKENZIE**

COMMERCIAL REAL ESTATE SERVICES, LLC

**410-821-8585**

**2328 W. Joppa Road, Suite 200  
Lutherville, MD 21093**

OFFICES IN:

**ANNAPOLIS**

**BALTIMORE**

**BEL AIR**

**COLUMBIA**

**LUTHERVILLE**

**[www.MACKENZIECOMMERCIAL.com](http://www.MACKENZIECOMMERCIAL.com)**

No warranty or representation, expressed or implied, is made as to the accuracy of the information contained herein, and same is submitted subject to errors, omissions, change of price, rental or other conditions, withdrawal without notice, and to any specific listing conditions imposed by our principals.