

FOR LEASE

Baltimore City, Maryland

RENOVATIONS
COMING
SOON!

EASTERN BUSINESS CENTER

ROMA

EASTERN BUSINESS CENTER

6801 EASTERN AVENUE | BALTIMORE, MD 21224

FOR LEASE

Baltimore City, Maryland

EASTERN BUSINESS CENTER

6801 EASTERN AVENUE | BALTIMORE, MARYLAND 21224

AVAILABLE

- ▶ 2,868 sf ± (Warehouse)
(1 loading dock)
- ▶ 2,185 sf ± (Warehouse)
(1 loading dock)
- ▶ 363 sf ± (Office)

ZONING

I-2 (General Industrial)

HIGHLIGHTS

- ▶ Abundant on-site parking and outdoor area
- ▶ Situated on the Baltimore City/County line
- ▶ Unparalleled access to I-95, I-695 and Downtown Baltimore
- ▶ 1 mile from Johns Hopkins Bayview Medical Center
- ▶ Close proximity to numerous retail and amenities, like The Home Depot, Wawa, Dunkin' and the new Yard 56 (Streets Market, Chipotle and more!)
- ▶ Renovations coming soon!

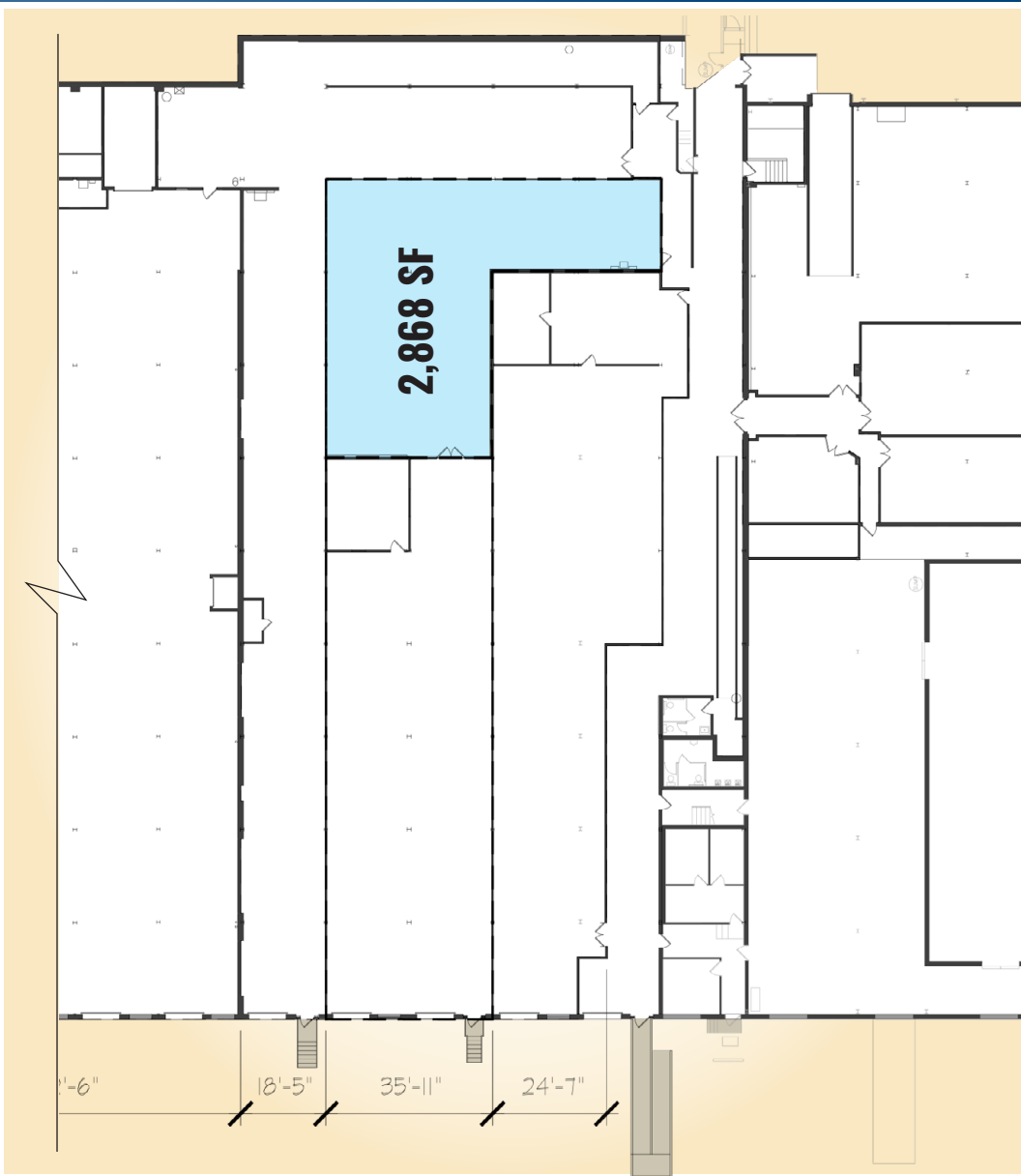


FOR LEASE

Baltimore City, Maryland

2,868 SF WAREHOUSE SPACE

EASTERN BUSINESS CENTER | 6801 EASTERN AVENUE | BALTIMORE, MARYLAND 21224

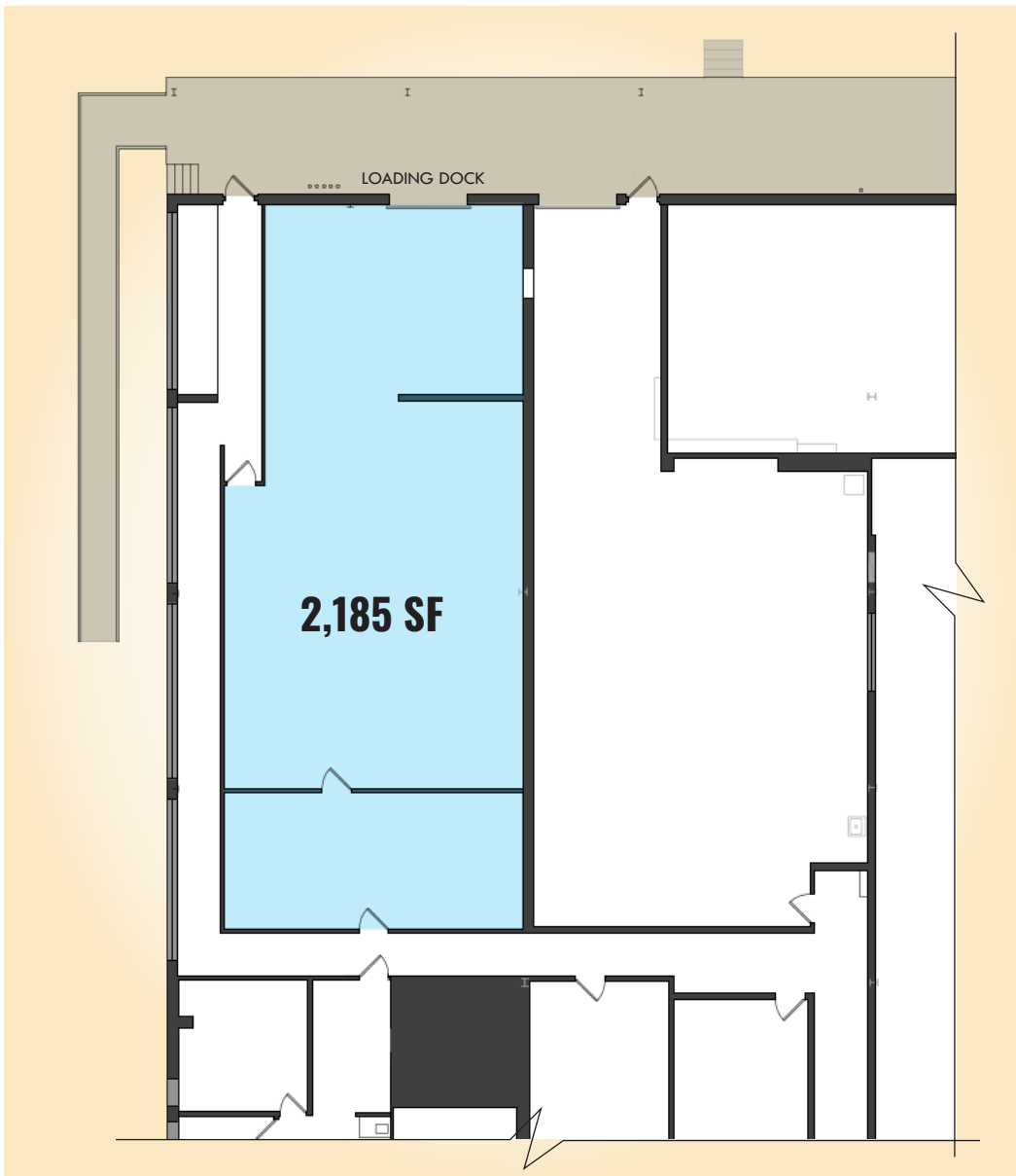


FOR LEASE

Baltimore City, Maryland

2,185 SF WAREHOUSE SPACE

EASTERN BUSINESS CENTER | 6801 EASTERN AVENUE | BALTIMORE, MARYLAND 21224

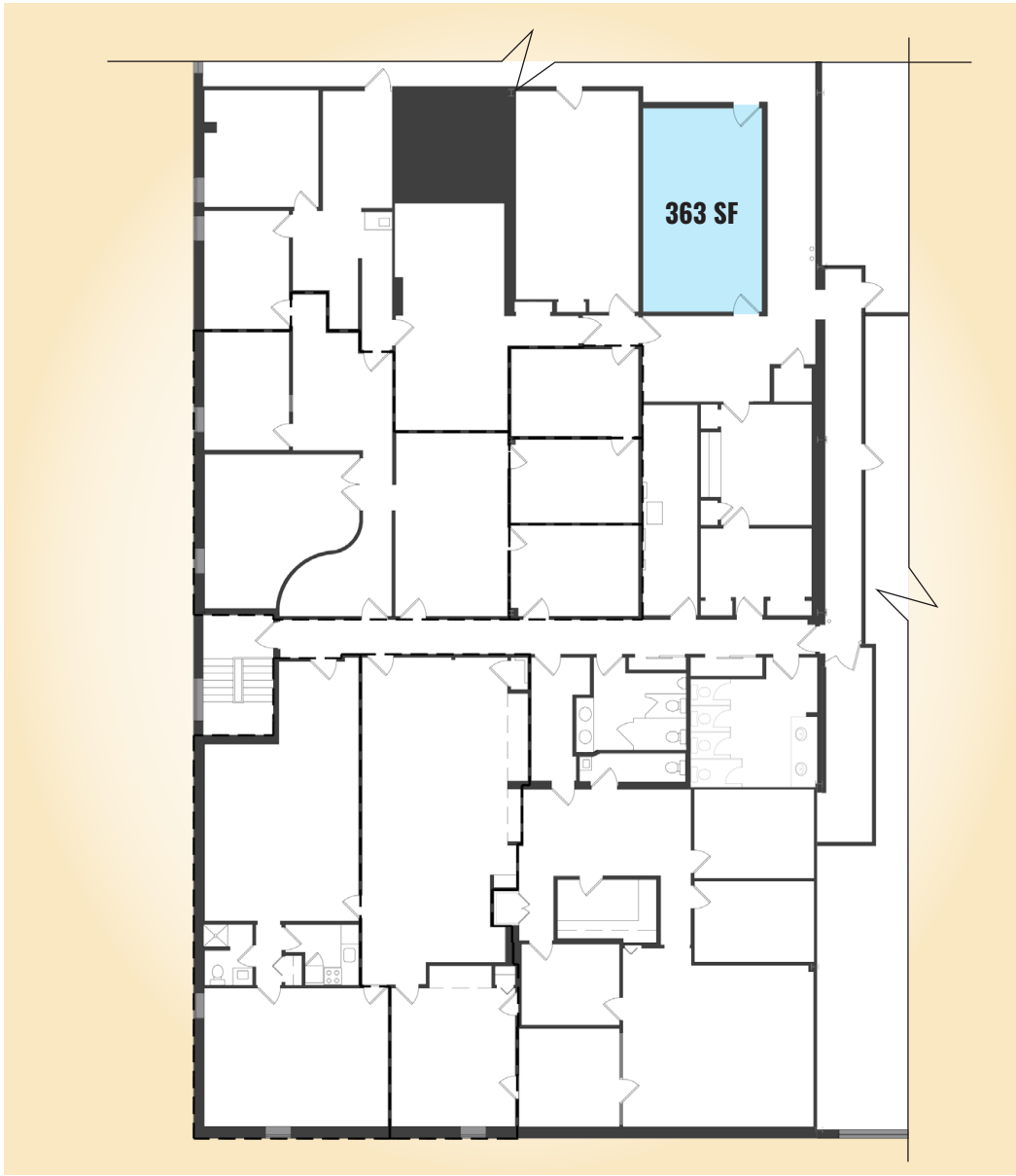


FOR LEASE

Baltimore City, Maryland

363 SF SPACE

EASTERN BUSINESS CENTER | 6801 EASTERN AVENUE | BALTIMORE, MARYLAND 21224



FOR LEASE

Baltimore City, Maryland

AERIAL

EASTERN BUSINESS CENTER | 6801 EASTERN AVENUE | BALTIMORE, MARYLAND 21224



FOR LEASE

Baltimore City, Maryland

BIRDSEYE

EASTERN BUSINESS CENTER | 6801 EASTERN AVENUE | BALTIMORE, MARYLAND 21224



150

DUNDALK POLICE STATION



OAK LAWN CEMETERY



ExtraSpace Storage

SITE

ST ANDREWS CEMETERY

FAIT AVE

JOHN RUHRAH ELEM. SCHOOL

EXIT 59

EASTERN AVE

150



FOR LEASE

Baltimore City, Maryland

INDUSTRIAL TRADE AREA

EASTERN BUSINESS CENTER | 6801 EASTERN AVENUE | BALTIMORE, MARYLAND 21224

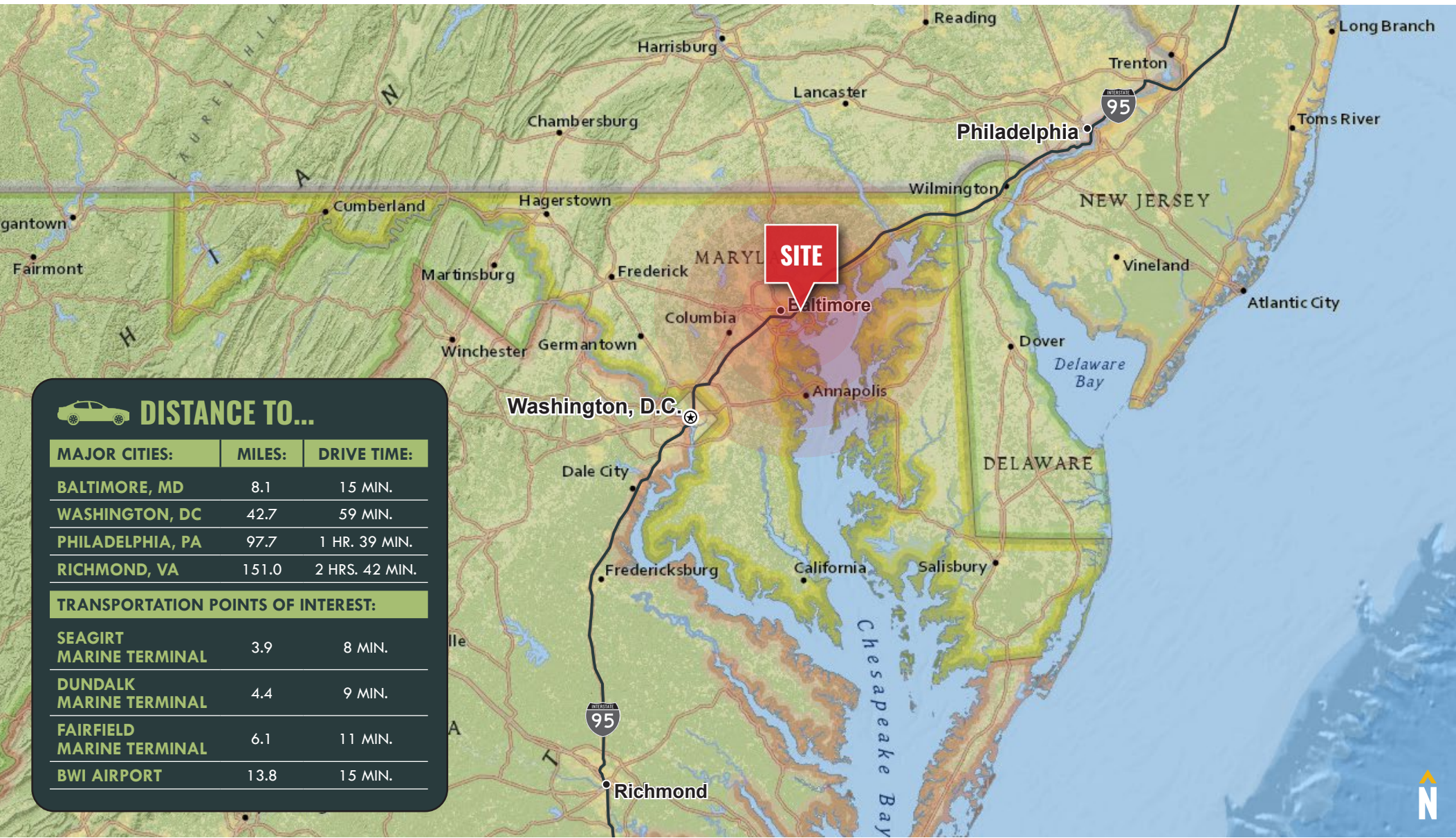


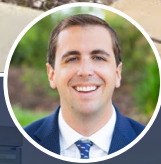
FOR LEASE

Baltimore City, Maryland

LOCATION

EASTERN BUSINESS CENTER | 6801 EASTERN AVENUE | BALTIMORE, MARYLAND 21224





ANDREW MEEDER, SIOR

SENIOR VICE PRESIDENT & PRINCIPAL

MACKENZIE COMMERCIAL REAL ESTATE SERVICES, LLC

410.494.4881

AMEEDER@MACKENZIECOMMERCIAL.COM

MacKenzie Commercial Real Estate Services, LLC • 410-821-8585 • 111 S. Calvert Street | Baltimore, Maryland 21202 • www.MACKENZIECOMMERCIAL.com

No warranty or representation, expressed or implied, is made as to the accuracy of the information contained herein, and same is submitted subject to errors, omissions, change of price, rental or other conditions, withdrawal without notice, and to any specific listing conditions imposed by our principals.