

# FOR LEASE

Baltimore City, Maryland



## 14346 JARRETTSVILLE PIKE

PHOENIX, MARYLAND 21131



**Patrick Smith, SIOR | Vice President**

☎ 410.494.4866 ✉ [psmith@mackenziecommercial.com](mailto:psmith@mackenziecommercial.com)

MacKenzie Commercial Real Estate Services, LLC • 410-821-8585 • 2328 W. Joppa Road, Suite 200 | Lutherville-Timonium, Maryland 21093 • [www.MACKENZIECOMMERCIAL.com](http://www.MACKENZIECOMMERCIAL.com)

**Chris Boland | Senior Real Estate Advisor**

☎ 410.494.6644 ✉ [cboland@mackenziecommercial.com](mailto:cboland@mackenziecommercial.com)

# FOR LEASE

 Baltimore City, Maryland

# 14346 JARRETTSVILLE PIKE

PHOENIX, MARYLAND 21131

## AVAILABLE

1,680 - 3,220 sf ±

## BUILDING SIZE

6,036 sf ±

## ZONING

RO-CR (Residential Office)

## TRAFFIC COUNT

14,653 (Rt. 146/156)

## HIGHLIGHTS

- ▶ Attractive property with well appointed space
- ▶ In close proximity to Northern Baltimore County and Harford County residents
- ▶ Parking is convenient and abundant



**Patrick Smith, SIOR | Vice President**

☎ 410.494.4866 ✉ psmith@mackenziecommercial.com

MacKenzie Commercial Real Estate Services, LLC • 410-821-8585 • 2328 W. Joppa Road, Suite 200 | Lutherville-Timonium, Maryland 21103 • www.MACKENZIECOMMERCIAL.com

**Chris Boland | Senior Real Estate Advisor**

☎ 410.494.6644 ✉ cboland@mackenziecommercial.com

# FOR LEASE



Baltimore City, Maryland

# BIRDSEYE

14346 JARRETTVILLE PIKE | PHOENIX, MARYLAND 21131



**SITE**



**RETAIL CENTER**

- SAFEWAY 
- BAGELMESITER
- STRAPASTA

# FOR LEASE

 Baltimore City, Maryland

# INTERIOR

14346 JARRETTSVILLE PIKE | PHOENIX, MARYLAND 21131

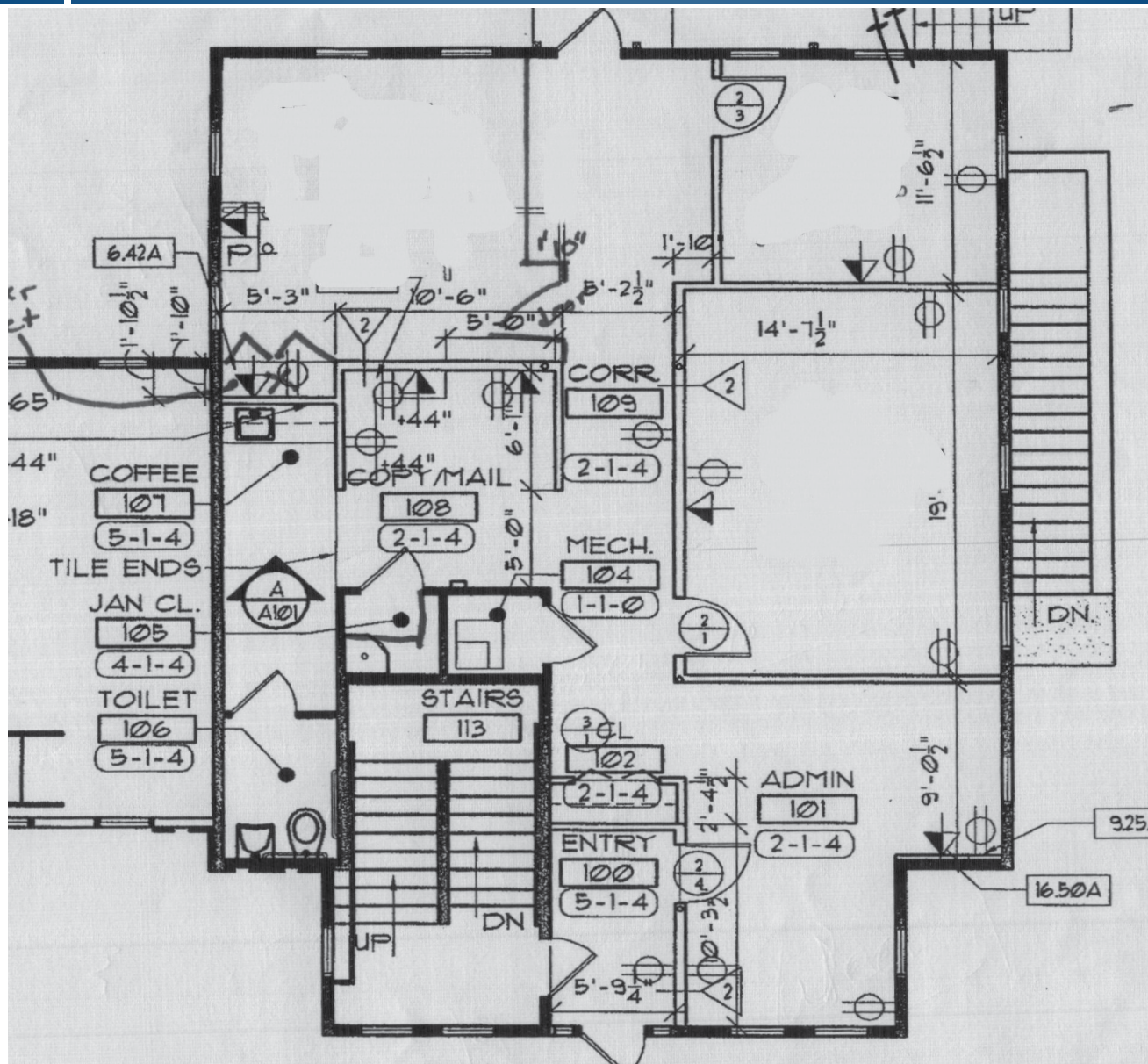


# FOR LEASE

Baltimore City, Maryland

## GAYLORD BROOKS OFFICE FLOOR PLAN - 1,610 SF

14346 JARRETTVILLE PIKE | PHOENIX, MARYLAND 21131



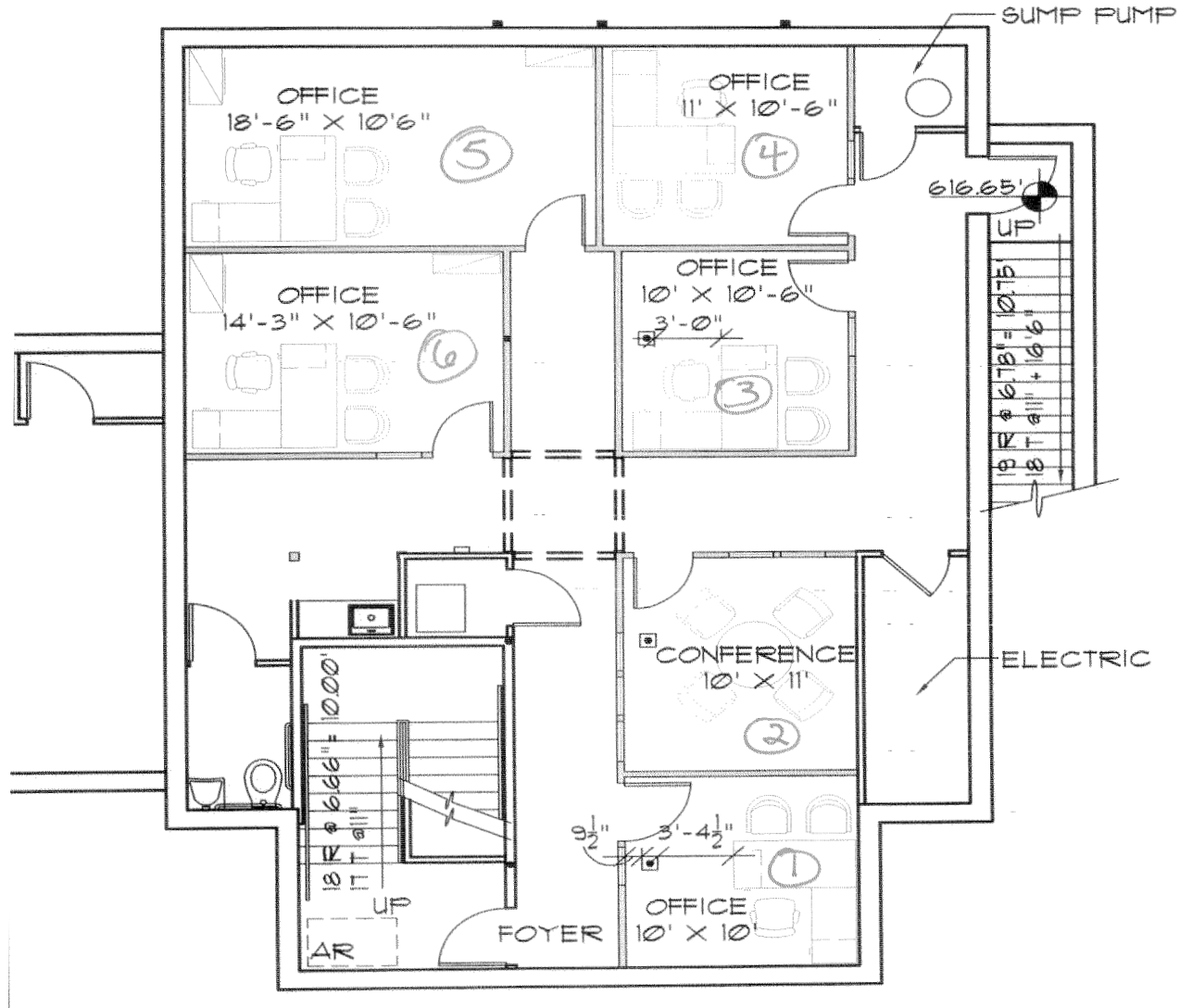
# FOR LEASE



Baltimore City, Maryland

# FLOORPLAN - FIRST FLOOR VANACY - 1,610 SF

14346 JARRETTVILLE PIKE | PHOENIX, MARYLAND 21131





**PATRICK SMITH, SIOR**

VICE PRESIDENT

MACKENZIE COMMERCIAL REAL ESTATE SERVICES, LLC

**410.494.4866**

**PSMITH@MACKENZIECOMMERCIAL.COM**



**CHRIS BOLAND**

SENIOR REAL ESTATE ADVISOR

MACKENZIE COMMERCIAL REAL ESTATE SERVICES, LLC

**410.494.6644**

**CBOLAND@MACKENZIECOMMERCIAL.COM**

**MacKenzie Commercial Real Estate Services, LLC • 410-821-8585 • 2328 W. Joppa Road, Suite 200 | Lutherville, Maryland 21093 • [www.MACKENZIECOMMERCIAL.com](http://www.MACKENZIECOMMERCIAL.com)**

*No warranty or representation, expressed or implied, is made as to the accuracy of the information contained herein, and same is submitted subject to errors, omissions, change of price, rental or other conditions, withdrawal without notice, and to any specific listing conditions imposed by our principals.*