

FOR LEASE

Baltimore County, MD



MCDONOUGH CROSSROADS

25 CROSSROADS DRIVE
OWINGS MILLS, MD 21117



Matt Mueller

☎ 410.494.6658

✉ mmueller@mackenziecommercial.com

MacKenzie Commercial Real Estate Services, LLC

Henson Ford

☎ 410.494.6657

✉ hford@mackenziecommercial.com

• 410-821-8585 • 2328 W. Joppa Road, Suite 200 | Lutherville-Timonium, Maryland 21093

Dylan Bozel

☎ 410.494.4896

✉ dbozel@mackenziecommercial.com

Joe Bradley

☎ 410.494.4892

✉ jbradley@mackenziecommercial.com

• www.MACKENZIECOMMERCIAL.com

FOR LEASE

Baltimore County, MD

MCDONOUGH CROSSROADS

25 CROSSROADS DRIVE | OWINGS MILLS, MARYLAND 21117

AVAILABLE

- ▶ Second Floor: up to 15,335 sf
Divisible to: 1,556 sf, 1,713 sf, 3,269 sf, 5,031 sf, 6,738 sf
- ▶ Suite 300: 18,772 sf
- ▶ Suite 405: 1,092 sf
- ▶ Suite 412: 3,202 sf

RENTAL RATE

\$27.50/sf, FS - Office

TERM

Negotiable

PARKING RATIO

4.2 : 1,000 sf

NEARBY AMENITIES

Retail, Banking, Personal Services,
Casual and Formal Dining Options

HIGHLIGHTS

- ▶ One of Owings Mills' most well-known office buildings
- ▶ Building features include an atrium lobby, terrace balconies and a state-of-the-art energy management system
- ▶ Close proximity to I-795
- ▶ Linwoods Restaurant is on-site



Matt Mueller

410.494.6658

mmueller@mackenziecommercial.com

Mackenzie Commercial Real Estate Services, LLC

Henson Ford

410.494.6657

hford@mackenziecommercial.com

410-821-8585

Dylan Bozel

410.494.4896

dbozel@mackenziecommercial.com

2328 W. Joppa Road, Suite 200 | Lutherville-Timonium, Maryland 21093

Joe Bradley

410.494.4892

jbradley@mackenziecommercial.com

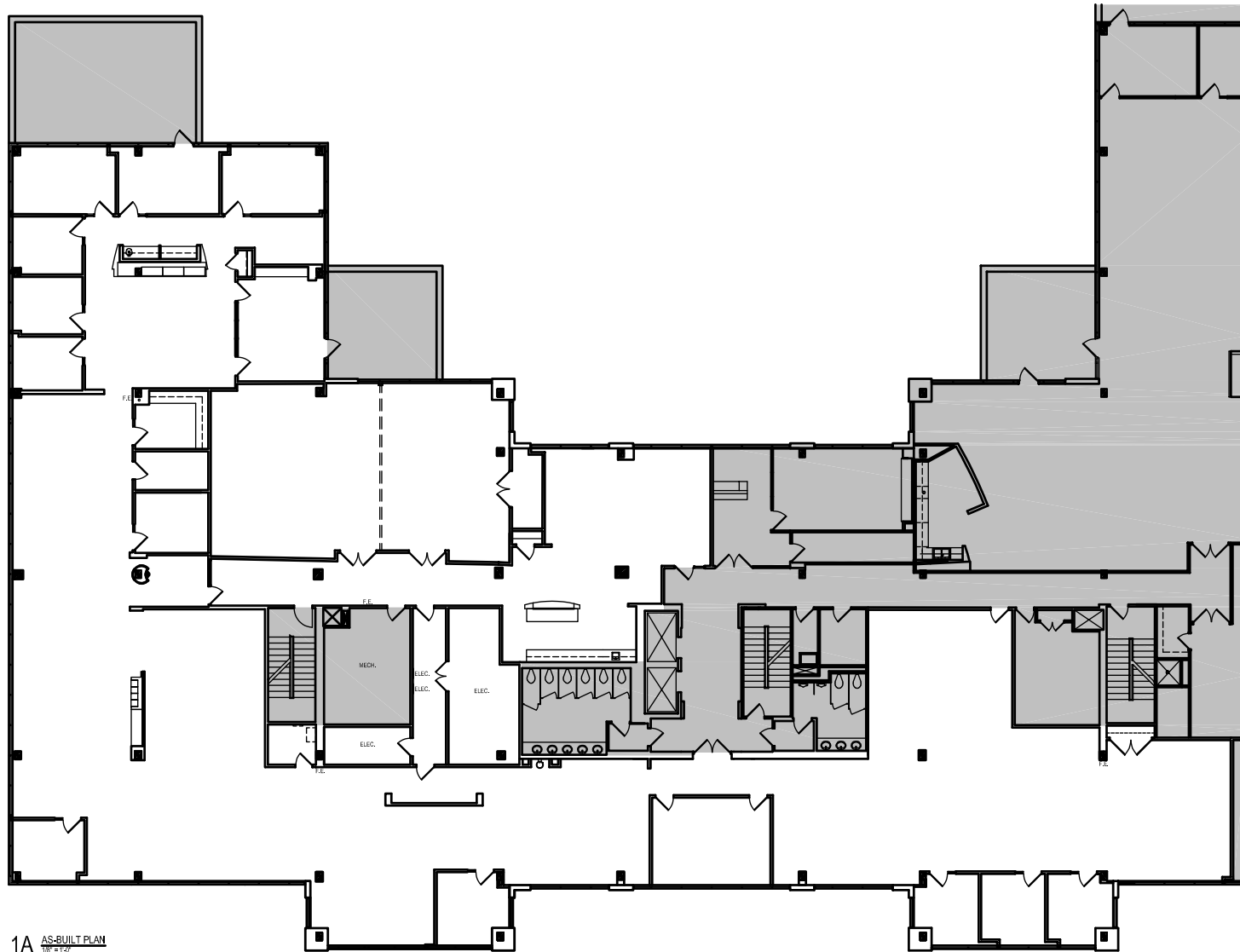
www.MACKENZIECOMMERCIAL.com

FOR LEASE

Baltimore County, MD

FLOOR PLAN: SECOND FLOOR

MCDONOUGH CROSSROADS | 25 CROSSROADS DRIVE | OWINGS MILLS, MARYLAND 21117



Matt Mueller

410.494.6658

mmueller@mackenziecommercial.com

Henson Ford

410.494.6657

hford@mackenziecommercial.com

Dylan Bozel

410.494.4896

dbozel@mackenziecommercial.com

Joe Bradley

410.494.4892

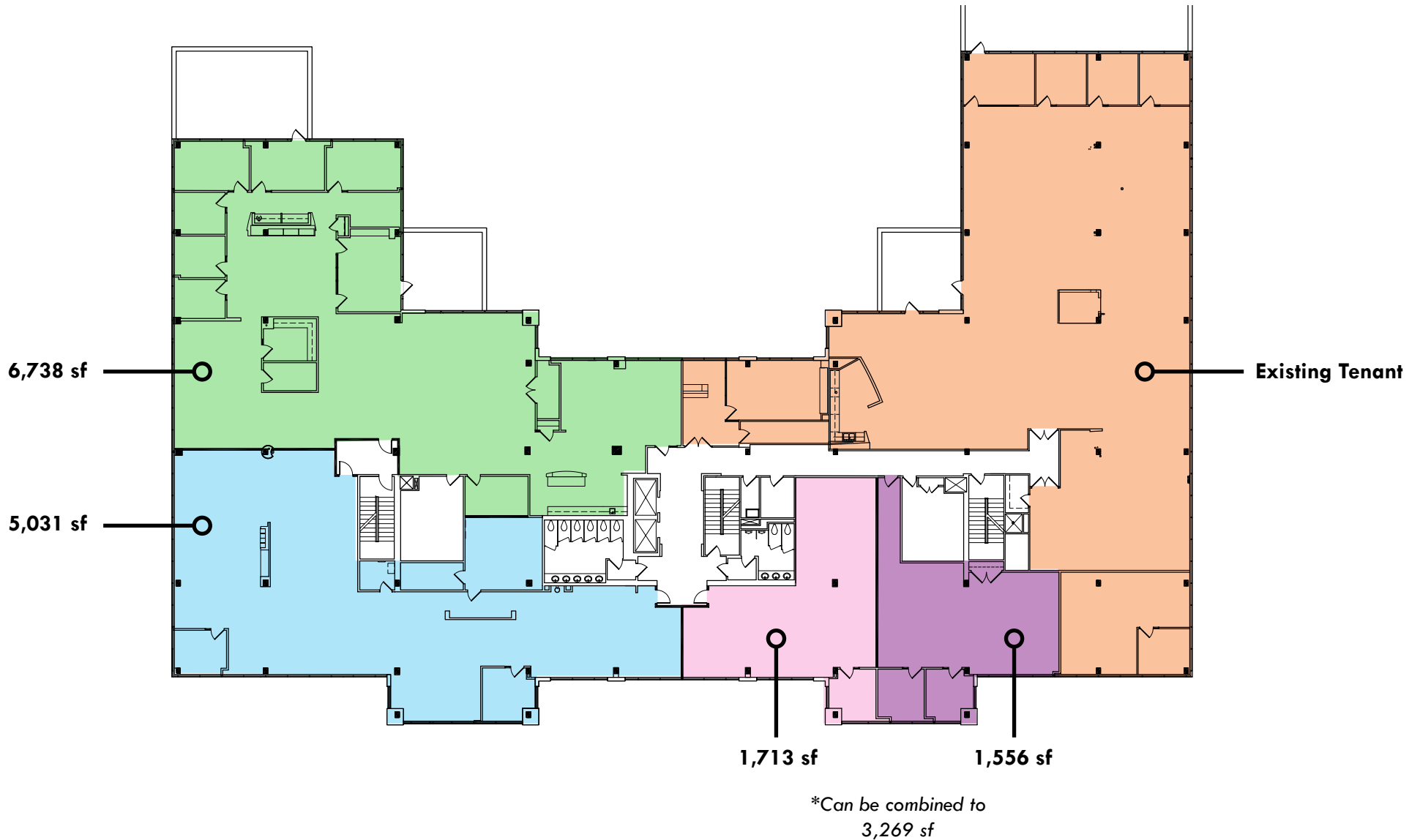
jbradley@mackenziecommercial.com

FOR LEASE

Baltimore County, MD

FLOOR PLAN: SECOND FLOOR

MCDONOUGH CROSSROADS | 25 CROSSROADS DRIVE | OWINGS MILLS, MARYLAND 21117



FOR LEASE

Baltimore County, MD

BIRDSEYE

MCDONOGH CROSSROADS | 25 CROSSROADS DRIVE | OWINGS MILLS, MARYLAND 21117



Matt Mueller

410.494.6658

mmueller@mackenziecommercial.com

Henson Ford

410.494.6657

hford@mackenziecommercial.com

Dylan Bozel

410.494.4896

dbozel@mackenziecommercial.com

Joe Bradley

410.494.4892

jbradley@mackenziecommercial.com